

For Research Use Only

IL-21R Polyclonal antibody

Catalog Number: 10533-1-AP

3 Publications



Basic Information

Catalog Number:

10533-1-AP

Size:

150ul, Concentration: 550 ug/ml by Nanodrop and 367 ug/ml by Bradford method using BSA as the standard;

Source:

Rabbit

Isotype:

IgG

Immunogen Catalog Number:

AG0762

GenBank Accession Number:

BC004348

GeneID (NCBI):

50615

UNIPROT ID:

Q9HBE5

Full Name:

interleukin 21 receptor

Calculated MW:

59 kDa

Observed MW:

68-70 kDa

Purification Method:

Antigen affinity purification

Recommended Dilutions:

WB 1:1000-1:5000

IHC 1:50-1:500

IF/ICC 1:10-1:100

Applications

Tested Applications:

WB, IHC, IF/ICC, ELISA

Cited Applications:

WB, IHC, IF

Species Specificity:

human, mouse, rat

Cited Species:

human, rat

Note-IHC: suggested antigen retrieval with TE buffer pH 9.0; (*) Alternatively, antigen retrieval may be performed with citrate buffer pH 6.0

Positive Controls:

WB : COLO 320 cells, K-562 cells, mouse thymus tissue, Raji cells, rat thymus tissue

IHC : human lymphoma tissue,

IF/ICC : COLO 320 cells,

Background Information

IL21R, a receptor for interleukin-21, belongs to the type I cytokine receptor family. IL21R has been shown to form a heterodimeric receptor complex with the common gamma-chain, a receptor subunit also shared by the receptors for interleukin 2, 4, 7, 9, and 15. This receptor transduces the growth promoting signal of IL21, and is important for the proliferation and differentiation of T cells, B cells, and natural killer (NK) cells. The ligand binding of this receptor leads to the activation of multiple downstream signaling molecules, including JAK1, JAK3, STAT1, and STAT3.

Notable Publications

Author	Pubmed ID	Journal	Application
Bruna Cristina Falavinha	35047041	Stem Cells Int	WB,IF
Xue Zhang	38194747	Int Immunopharmacol	WB,IF
Yao Yao	32719094	J Immunother Cancer	IHC

Storage

Storage:

Store at -20°C. Stable for one year after shipment.

Storage Buffer:

PBS with 0.02% sodium azide and 50% glycerol pH 7.3.

Aliquoting is unnecessary for -20°C storage

*** 20ul sizes contain 0.1% BSA

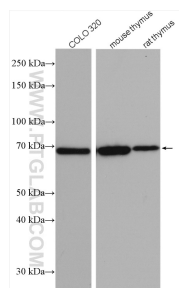
For technical support and original validation data for this product please contact:

T: 1 (888) 4PTGLAB (1-888-478-4522) (toll free in USA), or 1(312) 455-8498 (outside USA)

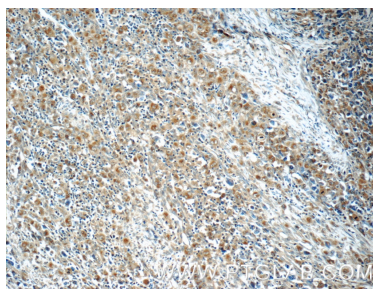
E: proteintech@ptglab.com
W: ptglab.com

This product is exclusively available under Proteintech Group brand and is not available to purchase from any other manufacturer.

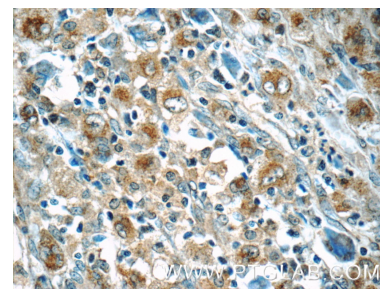
Selected Validation Data



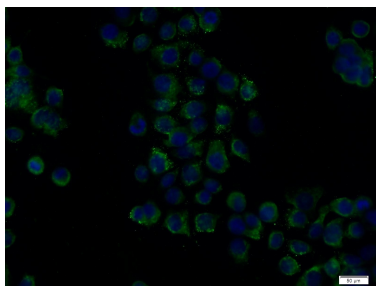
Various lysates were subjected to SDS PAGE followed by western blot with 10533-1-AP (IL21R antibody) at dilution of 1:2500 incubated at room temperature for 1.5 hours.



Immunohistochemical analysis of paraffin-embedded human lymphoma tissue slide using 10533-1-AP (IL21R Antibody) at dilution of 1:50 (under 10x lens).



Immunohistochemical analysis of paraffin-embedded human lymphoma tissue slide using 10533-1-AP (IL21R Antibody) at dilution of 1:50 (under 40x lens).



Immunofluorescent analysis of COLO 320 cells using 10533-1-AP (IL21R antibody) at dilution of 1:25 and Alexa Fluor 488-conjugated AffiniPure Goat Anti-Rabbit IgG(H+L).