

For Research Use Only

RABAC1 Polyclonal antibody

Catalog Number: 10542-1-AP

3 Publications



Basic Information

Catalog Number:

10542-1-AP

Size:

150ul, Concentration: 400 ug/ml by Nanodrop and 260 ug/ml by Bradford method using BSA as the standard;

Source:

Rabbit

Isotype:

IgG

Immunogen Catalog Number:

AG0830

GenBank Accession Number:

BC008950

GeneID (NCBI):

10567

UNIPROT ID:

Q9UI14

Full Name:

Rab acceptor 1 (prenylated)

Calculated MW:

21 kDa

Observed MW:

21 kDa

Purification Method:

Antigen affinity purification

Recommended Dilutions:

WB 1:500-1:1000

IHC 1:20-1:200

IF/ICC 1:10-1:100

Applications

Tested Applications:

WB, IHC, IF/ICC, ELISA

Cited Applications:

WB, IHC, IF

Species Specificity:

human, mouse, rat

Cited Species:

human, mouse

Note-IHC: suggested antigen retrieval with TE buffer pH 9.0; (*) Alternatively, antigen retrieval may be performed with citrate buffer pH 6.0

Positive Controls:

WB : HEK-293 cells, human pancreas tissue

IHC : human pancreas cancer tissue,

IF/ICC : HEK-293 cells,

Notable Publications

Author	Pubmed ID	Journal	Application
Uchenna Emechebe	34119693	Biochim Biophys Acta Proteins Proteom	WB
Dickison Virginia M VM	23241222	BMC Neurosci	WB,IHC
Ameair Abu Irqeba	33259547	PLoS One	WB,IF

Storage

Storage:

Store at -20°C. Stable for one year after shipment.

Storage Buffer:

PBS with 0.02% sodium azide and 50% glycerol pH 7.3.

Aliquoting is unnecessary for -20°C storage

*** 20ul sizes contain 0.1% BSA

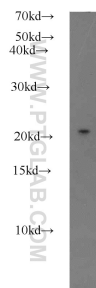
For technical support and original validation data for this product please contact:

T: 1 (888) 4PTGLAB (1-888-478-4522) (toll free in USA), or 1(312) 455-8498 (outside USA)

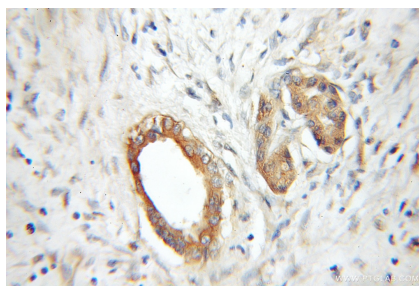
E: proteintech@ptglab.com
W: ptglab.com

This product is exclusively available under Proteintech Group brand and is not available to purchase from any other manufacturer.

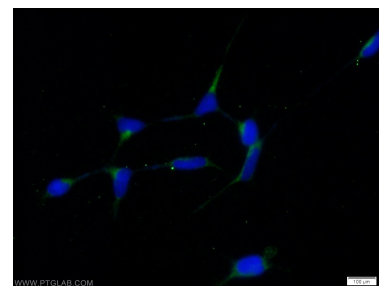
Selected Validation Data



HEK-293 cells were subjected to SDS PAGE followed by western blot with 10542-1-AP (RABAC1 antibody) at dilution of 1:500 incubated at room temperature for 1.5 hours.



Immunohistochemical analysis of paraffin-embedded human pancreas cancer using 10542-1-AP (RABAC1 antibody) at dilution of 1:50 (under 10x lens).



Immunofluorescent analysis of HEK-293 cells using 10542-1-AP (RABAC1 antibody) at dilution of 1:25 and Alexa Fluor 488-conjugated Goat Anti-Rabbit IgG(H+L).