

For Research Use Only

# IRF5 Polyclonal antibody, PBS Only

Catalog Number: 10547-1-PBS



## Basic Information

<b>Catalog Number:</b> 10547-1-PBS	<b>GenBank Accession Number:</b> BC004201	<b>Purification Method:</b> Antigen affinity purification
<b>Size:</b> 100ug, Concentration: 1 mg/ml by Nanodrop;	<b>GeneID (NCBI):</b> 3663	
<b>Source:</b> Rabbit	<b>UNIPROT ID:</b> Q13568	
<b>Isotype:</b> IgG	<b>Full Name:</b> interferon regulatory factor 5	
<b>Immunogen Catalog Number:</b> AG0841	<b>Calculated MW:</b> 56 kDa	
	<b>Observed MW:</b> 56 kDa	

## Applications

**Tested Applications:**  
WB, IHC, IF/ICC, FC (Intra), IP, ELISA

**Species Specificity:**  
human, mouse, rat

## Background Information

IRF5, also named as SLEB10, contains one IRF tryptophan pentad repeat DNA-binding domain and belongs to the IRF family. It is a transcription factor involved in the induction of interferons IFNA and INFB and inflammatory cytokines upon virus infection. It is activated by TLR7 or TLR8 signaling. Genetic variations in IRF5 are associated with susceptibility to inflammatory bowel disease type 14 (IBD14) and systemic lupus erythematosus type 10 (SLEB10). Alternative splice variant encoding different isoforms exist. Catalog# 10547-1-AP is a rabbit polyclonal antibody raised against the C-terminal of human IRF5.

## Storage

**Storage:**  
Store at -80°C.

**Storage Buffer:**  
PBS only, pH7.3

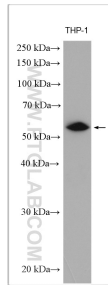
For technical support and original validation data for this product please contact:

T: 1 (888) 4PTGLAB (1-888-478-4522) (toll free in USA), or 1(312) 455-8498 (outside USA)

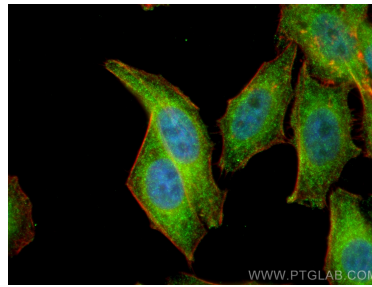
E: [proteintech@ptglab.com](mailto:proteintech@ptglab.com)  
W: [ptglab.com](http://ptglab.com)

**This product is exclusively available under Proteintech Group brand and is not available to purchase from any other manufacturer.**

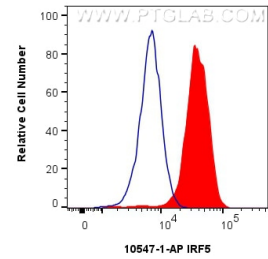
## Selected Validation Data



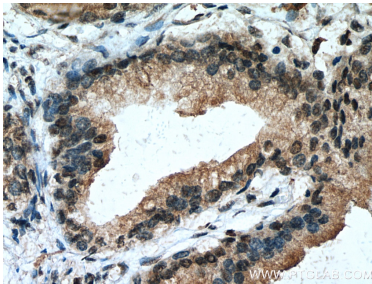
THP-1 cells were subjected to SDS PAGE followed by western blot with 10547-1-AP (IRF5 antibody) at dilution of 1:5000 incubated at room temperature for 1.5 hours. This data was developed using the same antibody clone with 10547-1-PBS in a different storage buffer formulation.



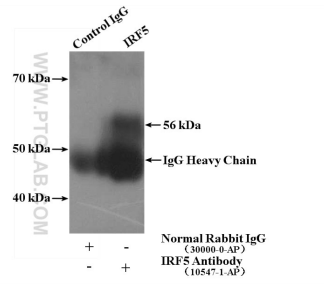
Immunofluorescent analysis of (4% PFA) fixed HepG2 cells using IRF5 antibody (10547-1-AP) at dilution of 1:200 and CoraLite@488-Conjugated AffiniPure Goat Anti-Rabbit IgG(H+L), CL594-Phalloidin (red). This data was developed using the same antibody clone with 10547-1-PBS in a different storage buffer formulation.



$1 \times 10^6$  THP-1 cells were intracellularly stained with 0.25 ug IRF5 Polyclonal antibody (10547-1-AP) and CoraLite@488-Conjugated Goat Anti-Rabbit IgG(H+L) (SA00013-2)(red), or 0.25 ug Rabbit IgG Isotype Control RecAb (98136-1-RR, Clone: 240953C9) (blue). Cells were fixed with 4% PFA and permeabilized with Flow Cytometry Perm Buffer. This data was developed using the same antibody clone with 10547-1-PBS in a different storage buffer formulation.



Immunohistochemical analysis of paraffin-embedded human prostate cancer tissue slide using 10547-1-AP (IRF5 antibody) at dilution of 1:200 (under 40x lens). Heat mediated antigen retrieval with Tris-EDTA buffer (pH 9.0). This data was developed using the same antibody clone with 10547-1-PBS in a different storage buffer formulation.



IP result of anti-IRF5 (IP:10547-1-AP, 4ug; Detection:10547-1-AP 1:300) with HeLa cells lysate 1600ug. This data was developed using the same antibody clone with 10547-1-PBS in a different storage buffer formulation.