

For Research Use Only

# APOL4 Polyclonal antibody

Catalog Number: 10564-1-AP



## Basic Information

### Catalog Number:

10564-1-AP

### Size:

150ul, Concentration: 350 ug/ml by Nanodrop;

### Source:

Rabbit

### Isotype:

IgG

### Immunogen Catalog Number:

AG0849

### GenBank Accession Number:

BC006276

### GeneID (NCBI):

80832

### UNIPROT ID:

Q9BPW4

### Full Name:

apolipoprotein L, 4

### Calculated MW:

39 kDa

### Observed MW:

40-50 kDa

### Purification Method:

Antigen affinity purification

### Recommended Dilutions:

WB 1:500-1:1000

IP 0.5-4.0 ug for 1.0-3.0 mg of total protein lysate

IHC 1:50-1:500

IF/ICC 1:50-1:500

## Applications

### Tested Applications:

WB, IHC, IF/ICC, IP, ELISA

### Species Specificity:

human

**Note-IHC: suggested antigen retrieval with TE buffer pH 9.0; (\*) Alternatively, antigen retrieval may be performed with citrate buffer pH 6.0**

### Positive Controls:

WB : HepG2 cells, U-87 MG cells

IP : HepG2 cells,

IHC : human liver cancer tissue, human liver tissue

IF/ICC : HepG2 cells,

## Storage

### Storage:

Store at -20°C. Stable for one year after shipment.

### Storage Buffer:

PBS with 0.02% sodium azide and 50% glycerol pH 7.3.

Aliquoting is unnecessary for -20°C storage

\*\*\* 20ul sizes contain 0.1% BSA

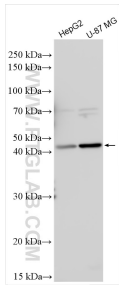
For technical support and original validation data for this product please contact:

T: 1 (888) 4PTGLAB (1-888-478-4522) (toll free in USA), or 1(312) 455-8498 (outside USA)

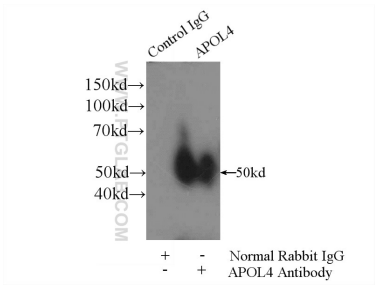
E: [proteintech@ptglab.com](mailto:proteintech@ptglab.com)  
W: [ptglab.com](http://ptglab.com)

This product is exclusively available under Proteintech Group brand and is not available to purchase from any other manufacturer.

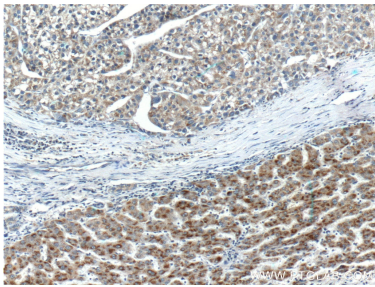
Selected Validation Data



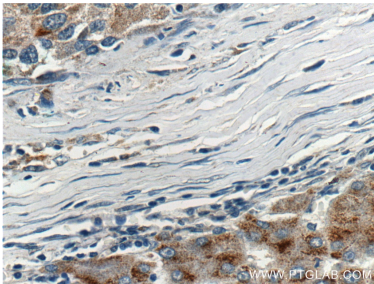
Various lysates were subjected to SDS PAGE followed by western blot with 10564-1-AP (APOL4 antibody) at dilution of 1:800 incubated at room temperature for 1.5 hours.



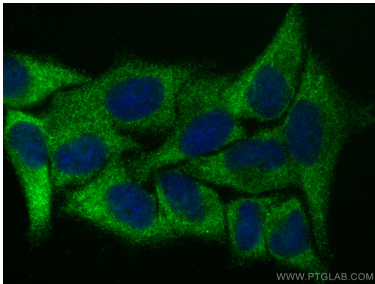
IP result of anti-APOL4 (IP:10564-1-AP, 4ug; Detection:10564-1-AP 1:2000) with HepG2 cells lysate 4000ug.



Immunohistochemical analysis of paraffin-embedded human liver cancer tissue slide using 10564-1-AP (APOL4 Antibody) at dilution of 1:200 (under 10x lens).



Immunohistochemical analysis of paraffin-embedded human liver cancer tissue slide using 10564-1-AP (APOL4 Antibody) at dilution of 1:200 (under 40x lens).



Immunofluorescent analysis of (-20°C Ethanol) fixed HepG2 cells using APOL4 antibody (10564-1-AP) at dilution of 1:200 and CoraLite® 488-Conjugated Goat Anti-Rabbit IgG(H+L) (SA00013-2).