

For Research Use Only

HIC5 Polyclonal antibody, PBS Only

Catalog Number: 10565-1-PBS

Featured Product



Basic Information

Catalog Number:

10565-1-PBS

Size:

100ug, Concentration: 1 mg/ml by Nanodrop;

Source:

Rabbit

Isotype:

IgG

Immunogen Catalog Number:

AG0868

GenBank Accession Number:

BC001830

GeneID (NCBI):

7041

UNIPROT ID:

O43294

Full Name:

transforming growth factor beta 1 induced transcript 1

Calculated MW:

48 kDa

Observed MW:

48-50 kDa

Purification Method:

Antigen affinity purification

Applications

Tested Applications:

WB, IHC, IF/ICC, IP, Indirect ELISA

Species Specificity:

human, mouse, rat

Storage

Storage:

Store at -80°C.

Storage Buffer:

PBS only, pH7.3

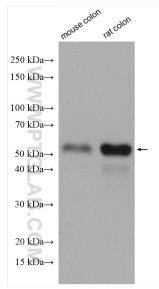
For technical support and original validation data for this product please contact:

T: 1 (888) 4PTGLAB (1-888-478-4522) (toll free in USA), or 1(312) 455-8498 (outside USA)

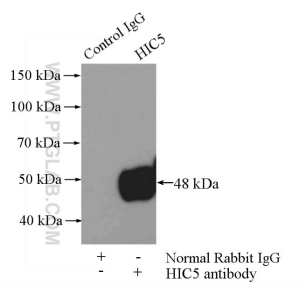
E: proteintech@ptglab.com
W: ptglab.com

This product is exclusively available under Proteintech Group brand and is not available to purchase from any other manufacturer.

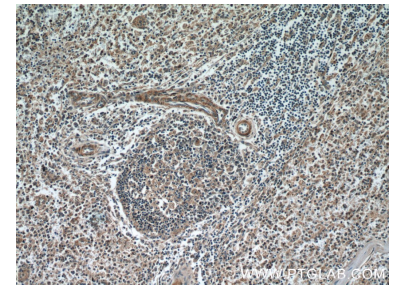
Selected Validation Data



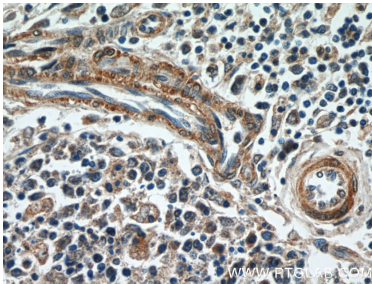
Various lysates were subjected to SDS PAGE followed by western blot with 10565-1-AP (HIC5 antibody) at dilution of 1:1000 incubated at room temperature for 1.5 hours. This data was developed using the same antibody clone with 10565-1-PBS in a different storage buffer formulation.



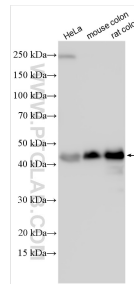
IP result of anti-HIC5 (IP:10565-1-AP, 4ug; Detection:10565-1-AP 1:500) with A431 cells lysate 1520ug. This data was developed using the same antibody clone with 10565-1-PBS in a different storage buffer formulation.



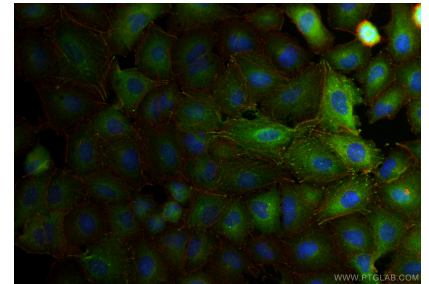
Immunohistochemical analysis of paraffin-embedded human spleen tissue slide using 10565-1-AP (HIC5 antibody at dilution of 1:50 (under 10x lens). This data was developed using the same antibody clone with 10565-1-PBS in a different storage buffer formulation.



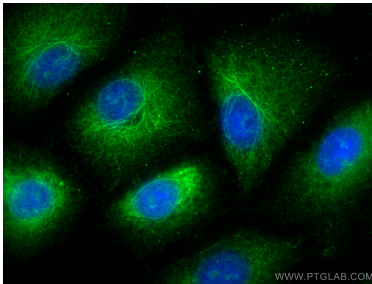
Immunohistochemical analysis of paraffin-embedded human spleen tissue slide using 10565-1-AP (HIC5 antibody at dilution of 1:50 (under 40x lens). This data was developed using the same antibody clone with 10565-1-PBS in a different storage buffer formulation.



Various lysates were subjected to SDS PAGE followed by western blot with 10565-1-AP (HIC5 antibody) at dilution of 1:3000 incubated at room temperature for 1.5 hours. This data was developed using the same antibody clone with 10565-1-PBS in a different storage buffer formulation.



Immunofluorescent analysis of (4% PFA) fixed A549 cells using HIC5 antibody (10565-1-AP) at dilution of 1:400 and CoraLite®488-Conjugated Goat Anti-Rabbit IgG(H+L) (SA00013-2), CL594-Phalloidin (red). This data was developed using the same antibody clone with 10565-1-PBS in a different storage buffer formulation.



Immunofluorescent analysis of (-20°C Methanol) fixed A549 cells using HIC5 antibody (10565-1-AP) at dilution of 1:400 and CoraLite®488-Conjugated AffiniPure Goat Anti-Rabbit IgG(H+L). This data was developed using the same antibody clone with 10565-1-PBS in a different storage buffer formulation.