

For Research Use Only

OTUB1 Polyclonal antibody

Catalog Number: 10573-1-AP

3 Publications



Basic Information

Catalog Number:

10573-1-AP

Size:

150ul, Concentration: 300 ug/ml by Nanodrop;

Source:

Rabbit

Isotype:

IgG

Immunogen Catalog Number:

AG0845

GenBank Accession Number:

BC007519

GeneID (NCBI):

55611

UNIPROT ID:

Q96FW1

Full Name:

OTU domain, ubiquitin aldehyde binding 1

Calculated MW:

31 kDa and 35 kDa

Observed MW:

31-35 kDa

Purification Method:

Antigen affinity purification

Recommended Dilutions:

WB 1:500-1:3000

IF/ICC 1:200-1:800

Applications

Tested Applications:

WB, IF/ICC, ELISA

Cited Applications:

WB, RIP

Species Specificity:

human, mouse, rat

Cited Species:

human, mouse

Positive Controls:

WB : MCF-7 cells, HepG2 cells, mouse brain tissue, mouse cerebellum tissue, rat brain tissue

IF/ICC : U2OS cells,

Background Information

OTUB1 belongs to the ovarian tumor domain protease (OTU) subfamily of deubiquitinases, which could block ubiquitination leading to protein stability. OTUB1 mainly prefers k-48 and k-63 ubiquitin chains type, especially in k-48 ubiquitin chain. OTUB1 performs its deubiquitinating function via two distinct manners: the canonical and non-canonical manner. OTUB1 is involved in many critical immune response processes, containing CD8 T cell activation, PD-L1 related immune evasion, and several infectious diseases. OTUB1 plays an important role in the occurrence, proliferation, invasion, and progression of various cancers, such as bladder cancer, breast cancer, prostate cancer, and colorectal cancer (PMID: 34875341, 35296795). OTUB1 has 2 isoforms with molecular weights of 31 and 35 kDa, respectively. With phospho or ubiquitin modification or reaction, the MW of OTUB1 will be increased.

Notable Publications

| Author | Pubmed ID | Journal | Application |
|---------------|-----------|--------------------------|-------------|
| Cyriel S Olie | 30739015 | iScience | WB |
| Aoyu Fan | 39785769 | Adv Sci (Weinh) | RIP |
| Hongyue Li | 38230274 | ACS Pharmacol Transl Sci | WB |

Storage

Storage:

Store at -20°C. Stable for one year after shipment.

Storage Buffer:

PBS with 0.02% sodium azide and 50% glycerol pH 7.3.

Aliquoting is unnecessary for -20°C storage

*** 20ul sizes contain 0.1% BSA

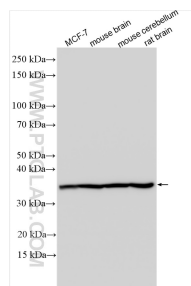
For technical support and original validation data for this product please contact:

T: 1 (888) 4PTGLAB (1-888-478-4522) (toll free in USA), or 1(312) 455-8498 (outside USA)

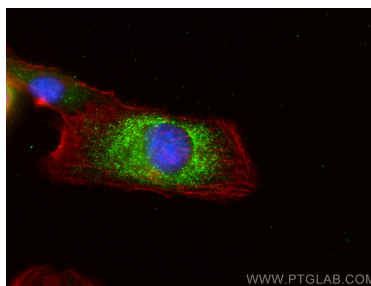
E: proteintech@ptglab.com
W: ptglab.com

This product is exclusively available under Proteintech Group brand and is not available to purchase from any other manufacturer.

Selected Validation Data



Various lysates were subjected to SDS PAGE followed by western blot with 10573-1-AP (OTUB1 antibody) at dilution of 1:1500 incubated at room temperature for 1.5 hours.



Immunofluorescent analysis of (-20°C Ethanol) fixed U2OS cells using OTUB1 antibody (10573-1-AP) at dilution of 1:400 and CoraLite® 488-Conjugated Goat Anti-Rabbit IgG(H+L) (SA00013-2), CL594-phalloidin (red).