

For Research Use Only

# TRAPA/SSR1 Polyclonal antibody

Catalog Number: 10583-1-AP **8 Publications**



## Basic Information

|   |  |   |
|---|--|---|
| <b>Catalog Number:</b><br>10583-1-AP  | <b>GenBank Accession Number:</b><br>BC007710         | <b>Purification Method:</b><br>Antigen affinity purification                          |
| <b>Size:</b><br>150ul, Concentration: 300 µg/ml by Nanodrop and 267 µg/ml by Bradford method using BSA as the standard; | <b>GeneID (NCBI):</b><br>6745                        | <b>Recommended Dilutions:</b><br>WB 1:2000-1:10000<br>IHC 1:50-1:500<br>IF 1:50-1:500 |
| <b>Source:</b><br>Rabbit  | <b>Full Name:</b><br>signal sequence receptor, alpha |   |
| <b>Isotype:</b><br>IgG  | <b>Calculated MW:</b><br>34 kDa                      |   |
| <b>Immunogen Catalog Number:</b><br>AG0878  | <b>Observed MW:</b><br>34 kDa                        |   |

## Applications

### Tested Applications:

IF, IHC, WB, ELISA

### Cited Applications:

IF, IHC, WB

### Species Specificity:

human, mouse, monkey

### Cited Species:

human, rat, monkey

**Note-IHC: suggested antigen retrieval with TE buffer pH 9.0; (\*) Alternatively, antigen retrieval may be performed with citrate buffer pH 6.0**

### Positive Controls:

**WB:** COS-7 cells, HepG2 cells, human liver tissue, mouse liver tissue, L02 cells

**IHC:** human ovary tumor tissue, human lung tissue

**IF:** HEK-293 cells,

## Background Information

TRAPA (translocon-associated protein subunit alpha), also known as SSR1 (signal sequence receptor subunit alpha), is a 34-kDa single-spanning membrane glycoprotein of the endoplasmic reticulum (ER) (PMID: 8050590). It is a part of the tetrameric TRAP complex (TRAP-alpha, TRAP-beta, TRAP-delta and TRAP-gamma) which functions in regulating the retention of ER resident proteins (PMID: 7916687). The TRAP complex is also involved in endoplasmic reticulum-associated degradation (ERAD) (PMID: 17380188).

## Notable Publications

| Author            | Pubmed ID | Journal  | Application |
|-------------------|-----------|----------|-------------|
| S Orvokki Mattila | 34042202  | FASEB J  | WB          |
| Pengli Zheng      | 30030520  | Cell Res | WB          |
| Chatchai Phoomak  | 33523898  | Sci Adv  | WB          |

## Storage

### Storage:

Store at -20°C. Stable for one year after shipment.

### Storage Buffer:

PBS with 0.02% sodium azide and 50% glycerol pH 7.3.

Aliquoting is unnecessary for -20°C storage

\*\*\* 20ul sizes contain 0.1% BSA

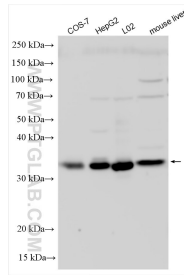
For technical support and original validation data for this product please contact:

T: 1 (888) 4PTGLAB (1-888-478-4522) (toll free in USA), or 1(312) 455-8498 (outside USA)

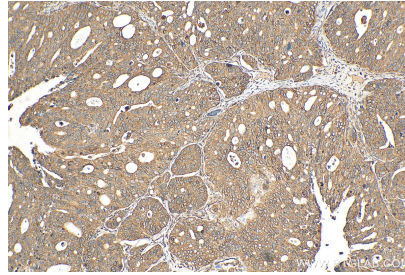
E: proteintech@ptglab.com  
W: ptglab.com

This product is exclusively available under Proteintech Group brand and is not available to purchase from any other manufacturer.

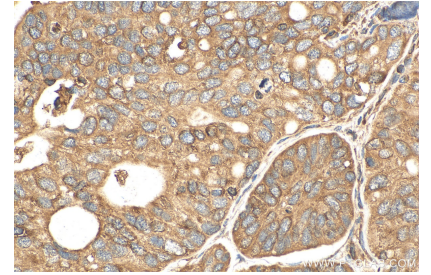
## Selected Validation Data



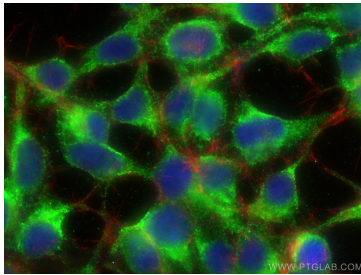
Various lysates were subjected to SDS PAGE followed by western blot with 10583-1-AP (TRAPA/SSR1 antibody) at dilution of 1:5000 incubated at room temperature for 1.5 hours.



Immunohistochemical analysis of paraffin-embedded human ovary tumor tissue slide using 10583-1-AP (TRAPA/SSR1 antibody) at dilution of 1:200 (under 10x lens). Heat mediated antigen retrieval with Tris-EDTA buffer (pH 9.0).



Immunohistochemical analysis of paraffin-embedded human ovary tumor tissue slide using 10583-1-AP (TRAPA/SSR1 antibody) at dilution of 1:200 (under 40x lens). Heat mediated antigen retrieval with Tris-EDTA buffer (pH 9.0).



Immunofluorescent analysis of (-20°C Ethanol) fixed HEK-293 cells using TRAPA/SSR1 antibody (10583-1-AP) at dilution of 1:200 and CoraLite®488-Conjugated AffiniPure Goat Anti-Rabbit IgG(H+L), CL594-phalloidin (red).