

For Research Use Only

EXTL3 Polyclonal antibody

Catalog Number: 10588-1-AP

2 Publications



Basic Information

Catalog Number: 10588-1-AP	GenBank Accession Number: BC006363	Purification Method: Antigen affinity purification
Size: 150ul , Concentration: 200 µg/ml by Nanodrop and 133 µg/ml by Bradford method using BSA as the standard;	GeneID (NCBI): 2137	Recommended Dilutions: WB 1:500-1:1000 IHC 1:20-1:200 IF 1:50-1:500
Source: Rabbit	Full Name: exostoses (multiple)-like 3	
Isotype: IgG	Calculated MW: 105 kDa	
Immunogen Catalog Number: AG0936	Observed MW: 65 kDa	

Applications

Tested Applications: IF, IHC, WB, ELISA	Positive Controls: WB : HepG2 cells, Jurkat cells IHC : human colon cancer tissue, IF : HepG2 cells,
Cited Applications: IF, WB	
Species Specificity: human	
Cited Species: human, mouse	
Note-IHC: suggested antigen retrieval with TE buffer pH 9.0; (*) Alternatively, antigen retrieval may be performed with citrate buffer pH 6.0	

Background Information

Exostosin like glycosyltransferase 3 (EXTL3), also known as RPR, is located at chromosome 8p21.1 and composed of 919 amino acids, making it the longest member of the EXT family (PMID: 35676258). EXTL3 encodes the glycosyltransferases responsible for the biosynthesis of the backbone structure of heparan sulfate (HS) (PMID: 24128412). EXTL3 has been identified as a receptor molecule for regenerating islet-derived (REG) protein ligands, which have been shown to stimulate islet β -cell growth. Mutations in EXTL3 could lead to skeletal dysplasia, developmental delay, and severe immune deficiency (PMID: 28148688). The predicted molecular weight is 105 kDa, but we detected the band at 65 kDa perhaps due to alternative splicing (PMID: 14618397).

Notable Publications

Author	Pubmed ID	Journal	Application
Ze-Hua Xu	37531162	Ann N Y Acad Sci	WB,IF
Levetan Claressa S CS	19158046	Endocr Pract	WB,IF

Storage

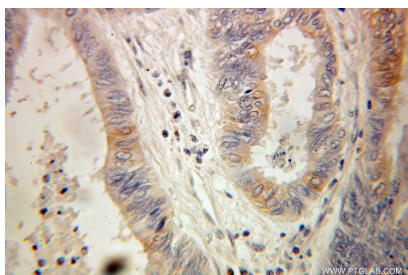
Storage:
Store at -20°C. Stable for one year after shipment.
Storage Buffer:
PBS with 0.02% sodium azide and 50% glycerol pH 7.3.
Aliquoting is unnecessary for -20°C storage

*** 20ul sizes contain 0.1% BSA

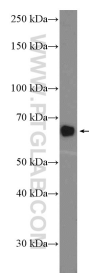
For technical support and original validation data for this product please contact:
T: 1 (888) 4PTGLAB (1-888-478-4522) (toll free in USA), or 1(312) 455-8498 (outside USA)
E: proteintech@ptglab.com
W: ptglab.com

This product is exclusively available under Proteintech Group brand and is not available to purchase from any other manufacturer.

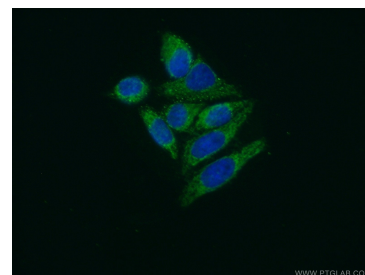
Selected Validation Data



Immunohistochemical analysis of paraffin-embedded human colon cancer using 10588-1-AP (EXTL3 antibody) at dilution of 1:100 (under 25x lens).



HepG2 cells were subjected to SDS PAGE followed by western blot with 10588-1-AP (EXTL3 Antibody) at dilution of 1:600 incubated at room temperature for 1.5 hours.



Immunofluorescent analysis of (10% Formaldehyde) fixed HepG2 cells using 10588-1-AP (EXTL3 antibody) at dilution of 1:50 and Alexa Fluor 488-conjugated AffiniPure Goat Anti-Rabbit IgG(H+L).