

For Research Use Only

CKS1B Polyclonal antibody

Catalog Number: 10610-1-AP



Basic Information

Catalog Number:

10610-1-AP

Size:

150ul , Concentration: 600 µg/ml by Nanodrop and 133 µg/ml by Bradford method using BSA as the standard;

Source:

Rabbit

Isotype:

IgG

Immunogen Catalog Number:

AG0928

GenBank Accession Number:

BC007751

GeneID (NCBI):

1163

UNIPROT ID:

P61024

Full Name:

CDC28 protein kinase regulatory subunit 1B

Calculated MW:

10 kDa

Observed MW:

10 kDa

Purification Method:

Antigen affinity purification

Recommended Dilutions:

WB 1:1000-1:4000

Applications

Tested Applications:

WB, ELISA

Species Specificity:

human

Positive Controls:

WB : HEK-293 cells, HT-29 cells, HepG2 cells, Jurkat cells, SMMC-7721 cells, Y79 cells

Background Information

Cyclin-dependent kinase regulatory subunit 1B (CKS1B), a member of the conserved cyclin kinase subunit 1 (CKS1) protein family, plays an essential role in cell cycling. A large number of studies have shown that CKS1B is associated with the pathogenesis of many human cancers and closely related to drug resistance. (PMID: 33102238)

Storage

Storage:

Store at -20°C. Stable for one year after shipment.

Storage Buffer:

PBS with 0.02% sodium azide and 50% glycerol pH 7.3.

Aliquoting is unnecessary for -20°C storage

*** 20ul sizes contain 0.1% BSA

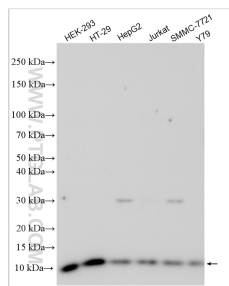
For technical support and original validation data for this product please contact:

T: 1 (888) 4PTGLAB (1-888-478-4522) (toll free in USA), or 1(312) 455-8498 (outside USA)

E: proteintech@ptglab.com
W: ptglab.com

This product is exclusively available under Proteintech Group brand and is not available to purchase from any other manufacturer.

Selected Validation Data



Various lysates were subjected to SDS PAGE followed by western blot with 10610-1-AP (CKS1B antibody) at dilution of 1:2000 incubated at room temperature for 1.5 hours.