

For Research Use Only

AP1M2 Polyclonal antibody

Catalog Number: 10618-1-AP

Featured Product

1 Publications



Basic Information

Catalog Number: 10618-1-AP	GenBank Accession Number: BC005021	Purification Method: Antigen affinity purification
Size: 150ul , Concentration: 400 ug/ml by Nanodrop and 213 ug/ml by Bradford method using BSA as the standard;	GeneID (NCBI): 10053	Recommended Dilutions: WB 1:500-1:1000 IHC 1:50-1:500
Source: Rabbit	UNIPROT ID: Q9Y6Q5	
Isotype: IgG	Full Name: adaptor-related protein complex 1, mu 2 subunit	
Immunogen Catalog Number: AG0961	Calculated MW: 48 kDa	
	Observed MW: 50-55 kDa	

Applications

Tested Applications:

WB, IHC, ELISA

Cited Applications:

WB

Species Specificity:

human, mouse, rat

Cited Species:

human

Note-IHC: suggested antigen retrieval with TE buffer pH 9.0; (*) Alternatively, antigen retrieval may be performed with citrate buffer pH 6.0

Positive Controls:

WB : mouse colon tissue, Hacat cells

IHC : human pancreas cancer tissue, human kidney tissue, human bowen disease

Background Information

AP1M2 is a subunit of the adaptor complex AP-1. It belongs to the adaptor complexes medium subunit family. Adaptor protein (AP) complexes are cytosolic heterotetramers that mediate the sorting of membrane proteins in the secretory and endocytic pathways. AP-1 is found at the cytoplasmic face of coated vesicles located at the Golgi complex, where it mediates both the recruitment of clathrin to the membrane and the recognition of sorting signals within the cytosolic tails of transmembrane receptors.

Notable Publications

Author	Pubmed ID	Journal	Application
Huan Wang	39303819	Gene	WB

Storage

Storage:

Store at -20°C. Stable for one year after shipment.

Storage Buffer:

PBS with 0.02% sodium azide and 50% glycerol pH 7.3.

Aliquoting is unnecessary for -20°C storage

*** 20ul sizes contain 0.1% BSA

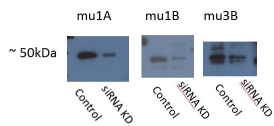
For technical support and original validation data for this product please contact:

T: 1 (888) 4PTGLAB (1-888-478-4522) (toll free in USA), or 1(312) 455-8498 (outside USA)

E: proteintech@ptglab.com
W: ptglab.com

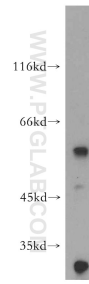
This product is exclusively available under Proteintech Group brand and is not available to purchase from any other manufacturer.

Selected Validation Data

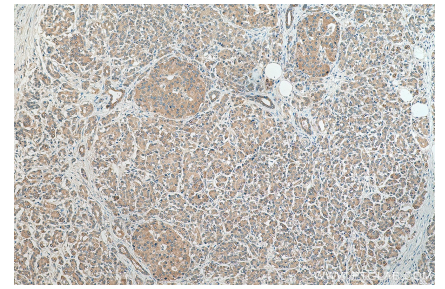


AP1M1 is mu1A: 12112-1-AP,
AP1M2 is mu1B: 10618-1-AP,
Ap3M2 is mu3B: 11925-1-AP,
acceptable bands ~50 kDa showing
some degree of siRNA
knockdown

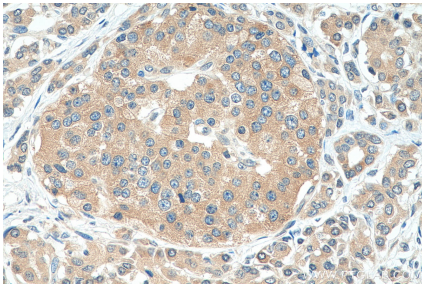
WB result of AP1M2 antibody (10618-1-AP;1:500)
with siRNA cell lysate.



mouse colon tissue were subjected to SDS PAGE
followed by western blot with 10618-1-AP (AP1M2
antibody) at dilution of 1:500 incubated at room
temperature for 1.5 hours.



Immunohistochemical analysis of paraffin-
embedded human pancreas cancer tissue slide
using 10618-1-AP (AP1M2 antibody) at dilution of
1:200 (under 10x lens). Heat mediated antigen
retrieval with Tris-EDTA buffer (pH 9.0).



Immunohistochemical analysis of paraffin-
embedded human pancreas cancer tissue slide
using 10618-1-AP (AP1M2 antibody) at dilution of
1:200 (under 40x lens). Heat mediated antigen
retrieval with Tris-EDTA buffer (pH 9.0).