

For Research Use Only

# SDHB Polyclonal antibody

Catalog Number: 10620-1-AP

Featured Product

83 Publications



## Basic Information

### Catalog Number:

10620-1-AP

### Size:

150ul, Concentration: 500 ug/ml by Nanodrop;

### Source:

Rabbit

### Isotype:

IgG

### Immunogen Catalog Number:

AG0968

### GenBank Accession Number:

BC007840

### GeneID (NCBI):

6390

### UNIPROT ID:

P21912

### Full Name:

succinate dehydrogenase complex, subunit B, iron sulfur (Ip)

### Calculated MW:

32 kDa

### Observed MW:

28-32 kDa

### Purification Method:

Antigen affinity purification

### Recommended Dilutions:

WB: 1:5000-1:50000

IP: 0.5-4.0 ug for 1.0-3.0 mg of total protein lysate

IHC: 1:100-1:400

IF/ICC: 1:50-1:500

FC (Intra): 0.40 ug per 10<sup>6</sup> cells in a 100 µl suspension

## Applications

### Tested Applications:

WB, IHC, IF/ICC, FC (Intra), IP, ELISA

### Cited Applications:

WB, IHC, IF, IP

### Species Specificity:

human, mouse, rat

### Cited Species:

human, mouse, rat, zebrafish

**Note-IHC: suggested antigen retrieval with TE buffer pH 9.0; (\*) Alternatively, antigen retrieval may be performed with citrate buffer pH 6.0**

### Positive Controls:

WB: HepG2 cells, HeLa cells, Jurkat cells, mouse liver tissue, rat liver tissue

IP: HEK-293 cells,

IHC: human heart tissue,

IF/ICC: HepG2 cells,

FC (Intra): HepG2 cells,

## Background Information

SDHB(Succinate dehydrogenase [ubiquinone] iron-sulfur subunit, mitochondrial) is also named as SDH, SDH1 and belongs to the succinate dehydrogenase/fumarate reductase iron-sulfur protein family. The SDHD, SDHB, and SDHC genes encode subunits of mitochondrial complex II (succinate dehydrogenase). Mitochondrial complex II is a heterotetrameric complex involved in the aerobic electron transport chain and catalyses the oxidation of succinate to fumarate (Krebs cycle) with transport of electrons to the ubiquinone pool. SDHA and SDHB are the hydrophilic catalytic part of the complex and are highly conserved(J Med Genet 2004;41:e99). Defects in SDHB are a cause of susceptibility to pheochromocytoma (PCC), paragangliomas type 4 (PGL4), paraganglioma and gastric stromal sarcoma (PGGSS) and Cowden-like syndrome (CWDLS).

## Notable Publications

Author	Pubmed ID	Journal	Application
Wen-Kuan Huang	34638938	Int J Mol Sci	WB
Teresa W-M Fan	36150727	J Immunol	
Beiwu Lan	36116558	Exp Cell Res	WB

## Storage

### Storage:

Store at -20°C. Stable for one year after shipment.

### Storage Buffer:

PBS with 0.02% sodium azide and 50% glycerol, pH7.3

Aliquoting is unnecessary for -20°C storage

\*\*\* 20ul sizes contain 0.1% BSA

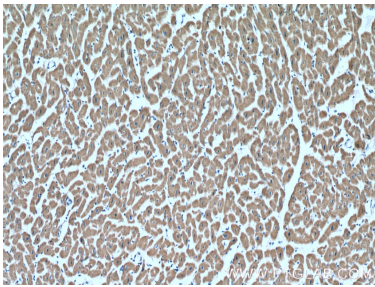
For technical support and original validation data for this product please contact:

T: 1 (888) 4PTGLAB (1-888-478-4522) (toll free in USA), or 1(312) 455-8498 (outside USA)

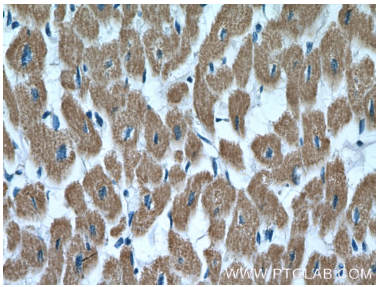
E: [proteintech@ptglab.com](mailto:proteintech@ptglab.com)  
W: [ptglab.com](http://ptglab.com)

This product is exclusively available under Proteintech Group brand and is not available to purchase from any other manufacturer.

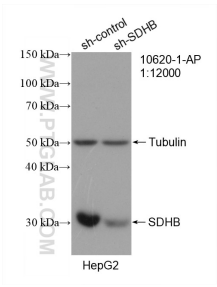
Selected Validation Data



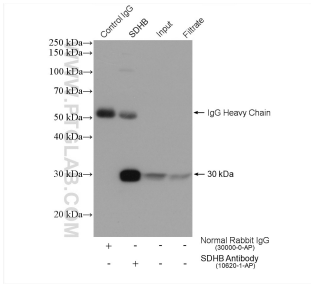
Immunohistochemical analysis of paraffin-embedded human heart tissue slide using 10620-1-AP (SDHB Antibody) at dilution of 1:200 (under 10x lens).



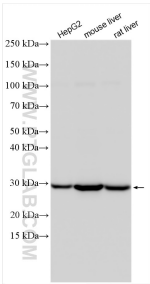
Immunohistochemical analysis of paraffin-embedded human heart tissue slide using 10620-1-AP (SDHB Antibody) at dilution of 1:200 (under 40x lens).



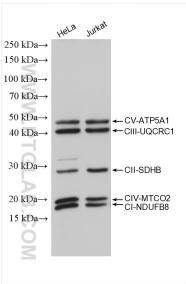
WB result of SDHB antibody (10620-1-AP; 1:12000; incubated at room temperature for 1.5 hours) with sh-Control and sh-SDHB transfected HepG2 cells.



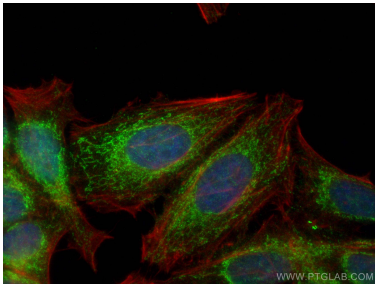
IP result of anti-SDHB (IP:10620-1-AP, 4ug; Detection:10620-1-AP 1:5000) with HEK-293 cells lysate 1360 ug.



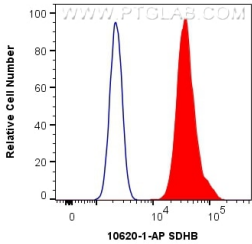
Various lysates were subjected to SDS PAGE followed by western blot with 10620-1-AP (SDHB antibody) at dilution of 1:16000 incubated at room temperature for 1.5 hours.



Various lysates were subjected to SDS PAGE followed by western blot with PK30006 (OXPHOS Cocktail (Human recommended)) at dilution of 1:4000 incubated at room temperature for 1 hours.



Immunofluorescent analysis of (4% PFA) fixed HepG2 cells using SDHB antibody (10620-1-AP) at dilution of 1:200 and CoraLite®488-Conjugated AffiniPure Goat Anti-Rabbit IgG(H+L), CL594-phalloidin (red).



1X10<sup>6</sup> HepG2 cells were intracellularly stained with 0.4 ug Anti-Human SDHB (10620-1-AP) and CoraLite®488-Conjugated AffiniPure Goat Anti-Rabbit IgG(H+L) at dilution 1:1000 (red), or 0.4 ug Isotype Control. Cells were fixed with 4% PFA and permeabilized with Flow Cytometry Perm Buffer (PF00011-C).