

For Research Use Only

14-3-3 Sigma Polyclonal antibody

Catalog Number: 10622-1-AP

2 Publications



Basic Information

| | | |
|--|--|--|
| Catalog Number: 10622-1-AP | GenBank Accession Number: BC002995 | Purification Method: Antigen affinity purification |
| Size: 150ul , Concentration: 650 µg/ml by Nanodrop and 367 µg/ml by Bradford method using BSA as the standard; | GeneID (NCBI): 2810 | Recommended Dilutions: WB 1:5000-1:50000 IHC 1:250-1:1000 |
| Source: Rabbit | Full Name: stratifin | |
| Isotype: IgG | Calculated MW: 28 kDa | |
| Immunogen Catalog Number: AG0973 | Observed MW: 28-30 kDa | |

Applications

| | |
|--|--|
| Tested Applications: FC, IHC, WB, ELISA | Positive Controls: WB : A431 cells, A549 cells, HeLa cells, U2OS cells IHC : mouse skin tissue, human stomach cancer tissue |
| Cited Applications: WB | |
| Species Specificity: human, mouse, rat | |
| Cited Species: human | |
| Note-IHC: suggested antigen retrieval with TE buffer pH 9.0; (*) Alternatively, antigen retrieval may be performed with citrate buffer pH 6.0 | |

Background Information

14-3-3 Sigma is a member 14-3-3 family of highly conserved proteins participating in diverse cellular processes including cell cycle progression. It is exclusively present in various epithelial cells, and alternatively named as human epithelial marker (HEM), or stratifin. Alteration of its expression has been linked to cancer.

Notable Publications

| Author | Pubmed ID | Journal | Application |
|-----------------|-----------|---------------|-------------|
| Yuliang Ren | 37922793 | Phytomedicine | WB |
| Thomas J Nelson | 37221295 | Sci Rep | WB |

Storage

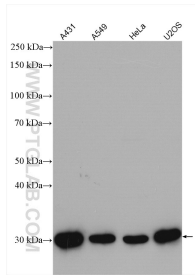
Storage:
Store at -20°C. Stable for one year after shipment.
Storage Buffer:
PBS with 0.02% sodium azide and 50% glycerol pH 7.3.
Aliquoting is unnecessary for -20°C storage

*** 20ul sizes contain 0.1% BSA

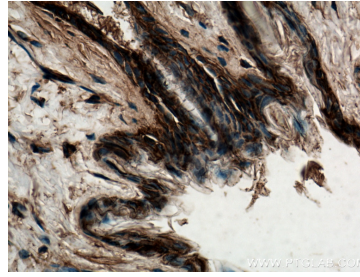
For technical support and original validation data for this product please contact:
T: 1 (888) 4PTGLAB (1-888-478-4522) (toll free in USA), or 1(312) 455-8498 (outside USA)
E: proteintech@ptglab.com
W: ptglab.com

This product is exclusively available under Proteintech Group brand and is not available to purchase from any other manufacturer.

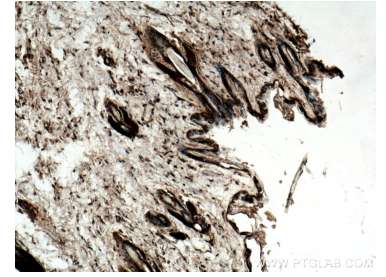
Selected Validation Data



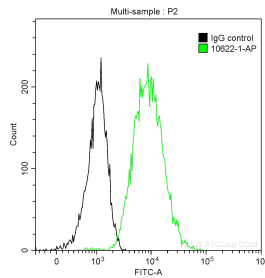
Various lysates were subjected to SDS PAGE followed by western blot with 10622-1-AP (14-3-3 sigma antibody) at dilution of 1:10000 incubated at room temperature for 1.5 hours.



Immunohistochemical analysis of paraffin-embedded mouse skin tissue slide using 10622-1-AP (14-3-3 sigma antibody) at dilution of 1:500 (under 40x lens).



Immunohistochemical analysis of paraffin-embedded mouse skin tissue slide using 10622-1-AP (14-3-3 sigma antibody) at dilution of 1:500 (under 10x lens).



1X10⁶ A431 cells were intracellularly stained with 0.2 ug Anti-Human 14-3-3 Sigma (10622-1-AP) and CoraLite®488-Conjugated AffiniPure Goat Anti-Rabbit IgG(H+L) at dilution 1:1000 (green), and 0.2 ug Control Antibody. Cells were fixed with 90% MeOH.