

For Research Use Only

ARPC1B Polyclonal antibody

Catalog Number: 10645-1-AP **2 Publications**



Basic Information

Catalog Number: 10645-1-AP	GenBank Accession Number: BC007555	Purification Method: Antigen affinity purification
Size: 150ul , Concentration: 133 µg/ml by Bradford method using BSA as the standard;	GeneID (NCBI): 10095	Recommended Dilutions: IHC 1:20-1:200
Source: Rabbit	Full Name: actin related protein 2/3 complex, subunit 1B, 41kDa	
Isotype: IgG	Calculated MW: 41 kDa	
Immunogen Catalog Number: AG0995		

Applications

Tested Applications: IHC, ELISA	Positive Controls: IHC : human breast cancer tissue,
Cited Applications: IHC	
Species Specificity: human, mouse, rat	
Cited Species: human	

Note-IHC: suggested antigen retrieval with TE buffer pH 9.0; (*) Alternatively, antigen retrieval may be performed with citrate buffer pH 6.0

Background Information

ARPC1B also known as ARC41, p41-ARC, or p40-ARC, is one of seven subunits of the human Arp2/3 protein complex, that belongs to the SOP2 family. ARPC1B localizes on centrosomes and has a distinct role in centrosomal homeostasis. ARPC1B is both a physiological activator and substrate of Aurora A kinase, and these interactions help to maintain mitotic integrity in mammalian cells. In recent research, ARPC1B is selected as a candidate prediction marker for sensitivity of Choroidal malignant melanomas to radiotherapy.

Notable Publications

Author	Pubmed ID	Journal	Application
Lukman Bin Md Auzair	26138391	Eur Arch Otorhinolaryngol	IHC
van Dekken Herman H	19167610	Cancer Genet Cytogenet	IHC

Storage

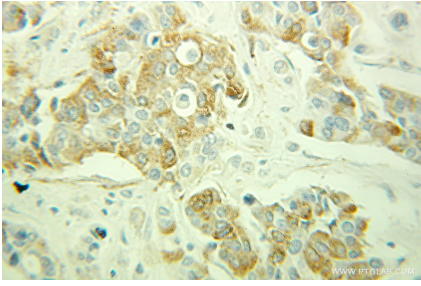
Storage:
Store at -20°C. Stable for one year after shipment.
Storage Buffer:
PBS with 0.02% sodium azide and 50% glycerol pH 7.3.
Aliquoting is unnecessary for -20°C storage

*** 20ul sizes contain 0.1% BSA

For technical support and original validation data for this product please contact:
T: 1 (888) 4PTGLAB (1-888-478-4522) (toll free in USA), or 1(312) 455-8498 (outside USA) E: proteintech@ptglab.com W: ptglab.com

This product is exclusively available under Proteintech Group brand and is not available to purchase from any other manufacturer.

Selected Validation Data



Immunohistochemical analysis of paraffin-embedded human breast cancer using 10645-1-AP (ARPC1B antibody) at dilution of 1:100 (under 25x lens).