

For Research Use Only

# SULT1C2 Polyclonal antibody

Catalog Number: 10662-1-AP

8 Publications



## Basic Information

### Catalog Number:

10662-1-AP

### Size:

150ul, Concentration: 600 ug/ml by Nanodrop and 367 ug/ml by Bradford method using BSA as the standard;

### Source:

Rabbit

### Isotype:

IgG

### Immunogen Catalog Number:

AG1064

### GenBank Accession Number:

BC005353

### GeneID (NCBI):

6819

### UNIPROT ID:

O00338

### Full Name:

sulfotransferase family, cytosolic, 1C, member 2

### Calculated MW:

35 kDa

### Observed MW:

30-35 kDa

### Purification Method:

Antigen affinity purification

### Recommended Dilutions:

WB 1:500-1:2000

IHC 1:50-1:500

## Applications

### Tested Applications:

WB, IHC, ELISA

### Cited Applications:

WB, IHC, IF

### Species Specificity:

human, mouse, rat

### Cited Species:

human, rat

**Note-IHC: suggested antigen retrieval with TE buffer pH 9.0; (\*) Alternatively, antigen retrieval may be performed with citrate buffer pH 6.0**

### Positive Controls:

WB : human stomach tissue, human kidney tissue, human liver tissue, mouse liver tissue

IHC : human prostate cancer tissue,

## Background Information

SULT1C2, also named as SULT1C1, ST1C2, ST1C1, and humSULTC2, belongs to the sulfotransferase 1 family. It is a sulfotransferase enzymes that catalyze the sulfate conjugation of many hormones, neurotransmitters, drugs, and xenobiotic compounds. SULT1C2 may be involved in the activation of carcinogenic hydroxylamines. It is responsible for transferring a sulfo moiety from PAPS to phenol-containing compounds.

## Notable Publications

Author	Pubmed ID	Journal	Application
Shu Xiao-Hong XH	22096581	PLoS One	WB, IHC
Shuo Cong	33691721	Nutr Metab (Lond)	WB
Xu Zheng	30116486	Oxid Med Cell Longev	WB

## Storage

### Storage:

Store at -20°C. Stable for one year after shipment.

### Storage Buffer:

PBS with 0.02% sodium azide and 50% glycerol pH 7.3.

Aliquoting is unnecessary for -20°C storage

\*\*\* 20ul sizes contain 0.1% BSA

For technical support and original validation data for this product please contact:

T: 1 (888) 4PTGLAB (1-888-478-4522) (toll free in USA), or 1(312) 455-8498 (outside USA)

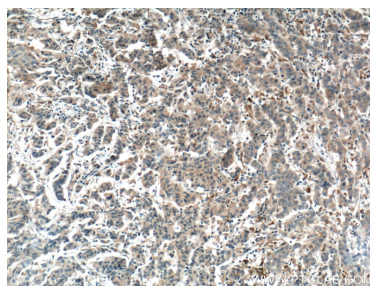
E: [proteintech@ptglab.com](mailto:proteintech@ptglab.com)  
W: [ptglab.com](http://ptglab.com)

This product is exclusively available under Proteintech Group brand and is not available to purchase from any other manufacturer.

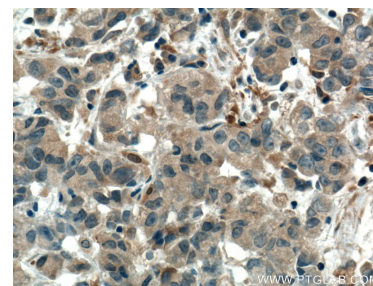
## Selected Validation Data



human stomach tissue were subjected to SDS PAGE followed by western blot with 10662-1-AP (SULT1C2 antibody) at dilution of 1:1000 incubated at room temperature for 1.5 hours.



Immunohistochemical analysis of paraffin-embedded human prostate cancer tissue slide using 10662-1-AP (SULT1C2 Antibody) at dilution of 1:200 (under 10x lens). Heat mediated antigen retrieval with Tris-EDTA buffer (pH 9.0).



Immunohistochemical analysis of paraffin-embedded human prostate cancer tissue slide using 10662-1-AP (SULT1C2 Antibody) at dilution of 1:200 (under 40x lens). Heat mediated antigen retrieval with Tris-EDTA buffer (pH 9.0).