

For Research Use Only

PMM2 Polyclonal antibody

Catalog Number: 10666-1-AP

Featured Product

9 Publications



Basic Information

Catalog Number: 10666-1-AP	GenBank Accession Number: BC008310	Purification Method: Antigen affinity purification
Size: 150ul, Concentration: 400 µg/ml by Nanodrop and 200 µg/ml by Bradford method using BSA as the standard;	GeneID (NCBI): 5373	Recommended Dilutions: WB 1:500-1:2000 IP 0.5-4.0 ug for 1.0-3.0 mg of total protein lysate IHC 1:200-1:800 IF 1:20-1:200
Source: Rabbit	Full Name: phosphomannomutase 2	
Isotype: IgG	Calculated MW: 28 kDa	
Immunogen Catalog Number: AG1031	Observed MW: 28-30 kDa	

Applications

Tested Applications: IF, IHC, IP, WB, ELISA	Positive Controls: WB: HepG2 cells, multi-tissue IP: mouse lung tissue, IHC: human breast cancer tissue, IF: HepG2 cells,
Cited Applications: IF, IHC, WB	
Species Specificity: human, mouse	
Cited Species: human, mouse	
Note-IHC: suggested antigen retrieval with TE buffer pH 9.0; (*) Alternatively, antigen retrieval may be performed with citrate buffer pH 6.0	

Background Information

PMM2(Phosphomannomutase 2) belongs to the eukaryotic PMM family. It is involved in the synthesis of the GDP-mannose and dolichol-phosphate-mannose required for a number of critical mannosyl transfer reactions. PMM2 catalyzes the second step in the conversion of fructose-6P to GDP-mannose.

Notable Publications

Author	Pubmed ID	Journal	Application
Giuseppina Andreotti	26488408	PLoS One	WB
Sangeetha Iyer	31636082	Dis Model Mech	WB
Marlen Görlacher	33209585	Mol Genet Metab Rep	WB,IF

Storage

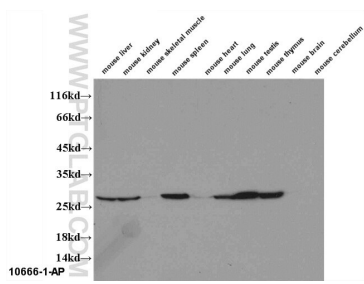
Storage:
Store at -20°C. Stable for one year after shipment.
Storage Buffer:
PBS with 0.02% sodium azide and 50% glycerol pH 7.3.
Aliquoting is unnecessary for -20°C storage

*** 20ul sizes contain 0.1% BSA

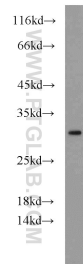
For technical support and original validation data for this product please contact:
T: 1 (888) 4PTGLAB (1-888-478-4522) (toll free in USA), or 1(312) 455-8498 (outside USA)
E: proteintech@ptglab.com
W: ptglab.com

This product is exclusively available under Proteintech Group brand and is not available to purchase from any other manufacturer.

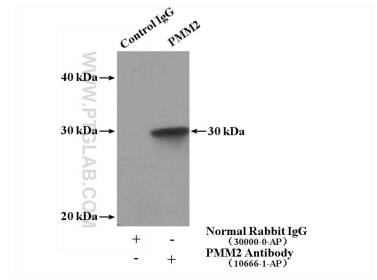
Selected Validation Data



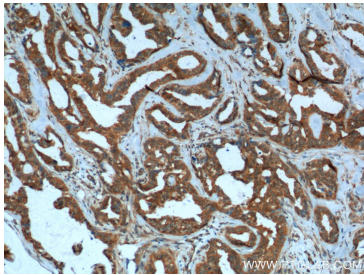
WB results of 10666-1-AP (PMM2 antibody) on several lysates.



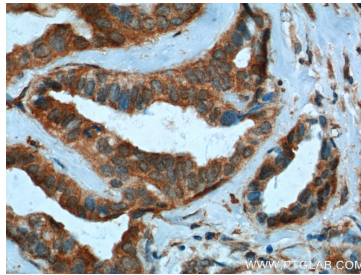
HepG2 cells were subjected to SDS PAGE followed by western blot with 10666-1-AP (PMM2 antibody) at dilution of 1:1000 incubated at room temperature for 1.5 hours.



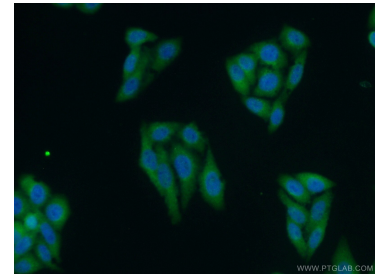
IP Result of anti-PMM2 (IP:10666-1-AP, 4ug; Detection:10666-1-AP 1:1000) with mouse lung tissue lysate 3600ug.



Immunohistochemical analysis of paraffin-embedded human breast cancer tissue slide using 10666-1-AP (PMM2 Antibody) at dilution of 1:400 (under 10x lens). Heat mediated antigen retrieval with Tris-EDTA buffer (pH 9.0).



Immunohistochemical analysis of paraffin-embedded human breast cancer tissue slide using 10666-1-AP (PMM2 Antibody) at dilution of 1:400 (under 40x lens). Heat mediated antigen retrieval with Tris-EDTA buffer (pH 9.0).



Immunofluorescent analysis of HepG2 cells using 10666-1-AP (PMM2 antibody) at dilution of 1:50 and Alexa Fluor 488-conjugated AffiniPure Goat Anti-Rabbit IgG(H+L).