

For Research Use Only

PMM2 Polyclonal antibody, PBS Only

Catalog Number: 10666-1-PBS

Featured Product



Basic Information

Catalog Number:

10666-1-PBS

Size:

100ug, Concentration: 1 mg/ml by Nanodrop;

Source:

Rabbit

Isotype:

IgG

Immunogen Catalog Number:

AG1031

GenBank Accession Number:

BC008310

GeneID (NCBI):

5373

UNIPROT ID:

O15305

Full Name:

phosphomannomutase 2

Calculated MW:

28 kDa

Observed MW:

28-30 kDa

Purification Method:

Antigen affinity purification

Applications

Tested Applications:

WB, IHC, IF/ICC, IP, Indirect ELISA

Species Specificity:

human, mouse

Background Information

PMM2(Phosphomannomutase 2) belongs to the eukaryotic PMM family. It is involved in the synthesis of the GDP-mannose and dolichol-phosphate-mannose required for a number of critical mannosyl transfer reactions. PMM2 catalyzes the second step in the conversion of fructose-6P to GDP-mannose.

Storage

Storage:

Store at -80°C.

Storage Buffer:

PBS Only

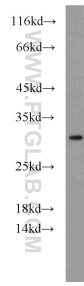
For technical support and original validation data for this product please contact:

T: 1 (888) 4PTGLAB (1-888-478-4522) (toll free in USA), or 1(312) 455-8498 (outside USA)

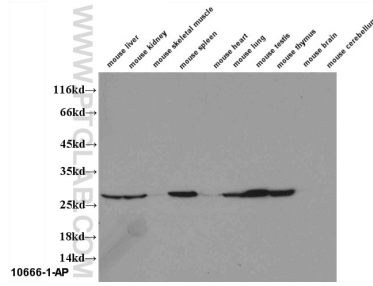
E: proteintech@ptglab.com
W: ptglab.com

This product is exclusively available under Proteintech Group brand and is not available to purchase from any other manufacturer.

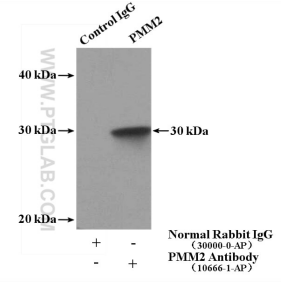
Selected Validation Data



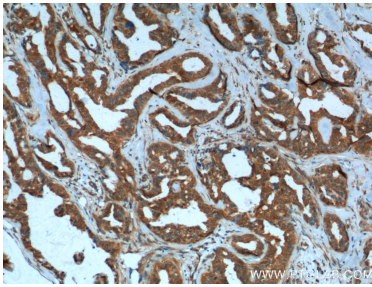
HepG2 cells were subjected to SDS PAGE followed by western blot with 10666-1-AP (PMM2 antibody) at dilution of 1:1000 incubated at room temperature for 1.5 hours. This data was developed using the same antibody clone with 10666-1-PBS in a different storage buffer formulation.



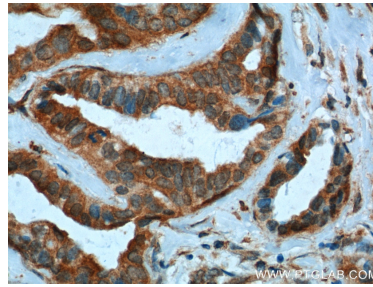
WB results of 10666-1-AP (PMM2 antibody) on several lysates. This data was developed using the same antibody clone with 10666-1-PBS in a different storage buffer formulation.



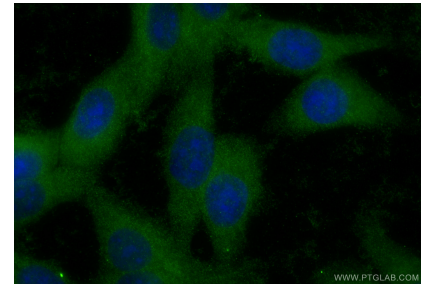
IP result of anti-PMM2 (IP:10666-1-AP, 4ug; Detection:10666-1-AP 1:1000) with mouse lung tissue lysate 3600ug. This data was developed using the same antibody clone with 10666-1-PBS in a different storage buffer formulation.



Immunohistochemical analysis of paraffin-embedded human breast cancer tissue slide using 10666-1-AP (PMM2 Antibody) at dilution of 1:400 (under 10x lens). Heat mediated antigen retrieval with Tris-EDTA buffer (pH 9.0). This data was developed using the same antibody clone with 10666-1-PBS in a different storage buffer formulation.



Immunohistochemical analysis of paraffin-embedded human breast cancer tissue slide using 10666-1-AP (PMM2 Antibody) at dilution of 1:400 (under 40x lens). Heat mediated antigen retrieval with Tris-EDTA buffer (pH 9.0). This data was developed using the same antibody clone with 10666-1-PBS in a different storage buffer formulation.



Immunofluorescent analysis of (-20°C Ethanol) fixed HepG2 cells using PMM2 antibody (10666-1-AP) at dilution of 1:200 and CoraLite®488-Conjugated Goat Anti-Rabbit IgG(H+L) (SA00013-2). This data was developed using the same antibody clone with 10666-1-PBS in a different storage buffer formulation.