

For Research Use Only

SCLY Polyclonal antibody

Catalog Number: 10667-1-AP



Basic Information

Catalog Number:

10667-1-AP

Size:

150ul , Concentration: 550 ug/ml by Nanodrop;

Source:

Rabbit

Isotype:

IgG

Immunogen Catalog Number:

AG0972

GenBank Accession Number:

BC007891

GeneID (NCBI):

51540

UNIPROT ID:

Q96L15

Full Name:

selenocysteine lyase

Calculated MW:

49 kDa

Observed MW:

48 kDa

Purification Method:

Antigen affinity purification

Recommended Dilutions:

WB 1:500-1:2000

Applications

Tested Applications:

WB, ELISA

Species Specificity:

human, mouse, rat

Positive Controls:

WB : HEK-293T cells, mouse brain tissue, rat brain tissue

Background Information

Selenocysteine lyase (SCLY or SCL) catalyzes the decomposition of L-selenocysteine to L-alanine and elemental selenium. This protein expresses in all mouse tissues examined, with the highest expression in liver, kidney, and testis. Mouse SclY localized to the cytosolic fraction in mouse liver and formed homodimers (PMID:10692412). This antibody detects the N-terminal of the protein.

Storage

Storage:

Store at -20°C. Stable for one year after shipment.

Storage Buffer:

PBS with 0.02% sodium azide and 50% glycerol pH 7.3.

Aliquoting is unnecessary for -20°C storage

*** 20ul sizes contain 0.1% BSA

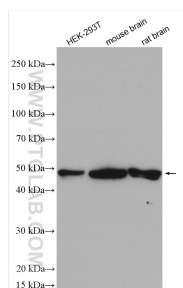
For technical support and original validation data for this product please contact:

T: 1 (888) 4PTGLAB (1-888-478-4522) (toll free in USA), or 1(312) 455-8498 (outside USA)

E: proteintech@ptglab.com
W: ptglab.com

This product is exclusively available under Proteintech Group brand and is not available to purchase from any other manufacturer.

Selected Validation Data



Various lysates were subjected to SDS PAGE followed by western blot with 10667-1-AP (SCLY antibody) at dilution of 1:1000 incubated at room temperature for 1.5 hours.