

For Research Use Only

# LAMR1/RPSA Polyclonal antibody

Catalog Number: 10668-1-AP

1 Publications



## Basic Information

Catalog Number:

10668-1-AP

Size:

150ul, Concentration: 260 ug/ml by Nanodrop and 150 ug/ml by Bradford method using BSA as the standard;

Source:

Rabbit

Isotype:

IgG

Immunogen Catalog Number:

AG1055

GenBank Accession Number:

BC008867

GeneID (NCBI):

3921

UNIPROT ID:

P08865

Full Name:

ribosomal protein SA

Calculated MW:

33 kDa

Purification Method:

Antigen affinity purification

Recommended Dilutions:

IHC 1:50-1:500

## Applications

Tested Applications:

IHC, ELISA

Cited Applications:

IHC

Species Specificity:

human, mouse, rat

Cited Species:

mouse

Positive Controls:

IHC : human lung cancer tissue,

**Note-IHC: suggested antigen retrieval with TE buffer pH 9.0; (\*) Alternatively, antigen retrieval may be performed with citrate buffer pH 6.0**

## Background Information

The ribosomal protein SA (RPSA), previously named 67 kD laminin receptor(67LR), 37 kD laminin receptor precursor (37LRP) and p40 ribosome-associated protein, is a multifunctional protein, that plays a role in a number of pathological processes, such as cancer and prion diseases. It is overexpressed in various cancer cell lines, and the level of the laminin receptor transcript is higher in colon carcinoma tissue and lung cancer cell line than their normal counterparts. This antibody is a rabbit polyclonal antibody raised against a fusion protein of full length human RPSA. This antibody is specific to RPSA (LAMR1).

## Notable Publications

Author	Pubmed ID	Journal	Application
Mengmeng Liu	33217534	Microb Pathog	IHC

## Storage

Storage:

Store at -20°C. Stable for one year after shipment.

Storage Buffer:

PBS with 0.02% sodium azide and 50% glycerol pH 7.3.

Aliquoting is unnecessary for -20°C storage

\*\*\* 20ul sizes contain 0.1% BSA

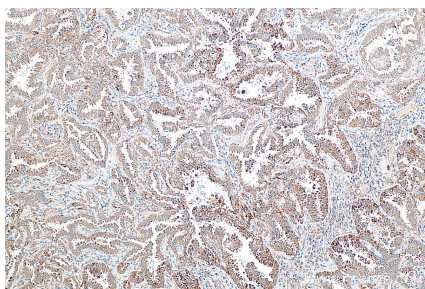
For technical support and original validation data for this product please contact:

T: 1 (888) 4PTGLAB (1-888-478-4522) (toll free in USA), or 1(312) 455-8498 (outside USA)

E: [proteintech@ptglab.com](mailto:proteintech@ptglab.com)  
W: [ptglab.com](http://ptglab.com)

This product is exclusively available under Proteintech Group brand and is not available to purchase from any other manufacturer.

## Selected Validation Data



Immunohistochemical analysis of paraffin-embedded human lung cancer tissue slide using 10668-1-AP (LAMR1, RPSA antibody) at dilution of 1:200 (under 10 $\times$  lens). Heat mediated antigen retrieval with Tris-EDTA buffer (pH 9.0).