

For Research Use Only

# CARD9 Polyclonal antibody, PBS Only

Catalog Number:10669-1-PBS

Featured Product



## Basic Information

**Catalog Number:**

10669-1-PBS

**Size:**

100ug , Concentration: 1 mg/ml by Nanodrop;

**Source:**

Rabbit

**Isotype:**

IgG

**Immunogen Catalog Number:**

AG1057

**GenBank Accession Number:**

BC008877

**GeneID (NCBI):**

64170

**UNIPROT ID:**

Q9H257

**Full Name:**

caspase recruitment domain family, member 9

**Calculated MW:**

62 kDa

**Observed MW:**

55-62 kDa

**Purification Method:**

Antigen affinity purification

## Applications

**Tested Applications:**

WB, IHC, Indirect ELISA

**Species Specificity:**

human, mouse, rat

## Background Information

CARD9, a member of the caspase recruitment domain (CARD) protein family, plays an important regulatory role in cell apoptosis. Defects in CARD9 are the cause of familial candidiasis type 2 (CANDF2) characterized by impaired clearance of fungal infections and results in colonization and infections of the mucosa or skin, predominantly with *Candida albicans*. CARD9 is highly expressed in spleen and regulate activation of NF-kappa-B by interaction with positive regulator of apoptosis BCL10 via the CARD domain.

## Storage

**Storage:**

Store at -80°C.

**Storage Buffer:**

PBS only, pH7.3

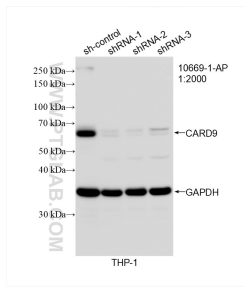
For technical support and original validation data for this product please contact:

T: 1 (888) 4PTGLAB (1-888-478-4522) (toll free in USA), or 1(312) 455-8498 (outside USA)

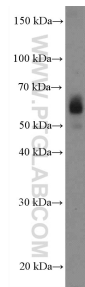
E: [proteintech@ptglab.com](mailto:proteintech@ptglab.com)  
W: [ptglab.com](http://ptglab.com)

**This product is exclusively available under Proteintech Group brand and is not available to purchase from any other manufacturer.**

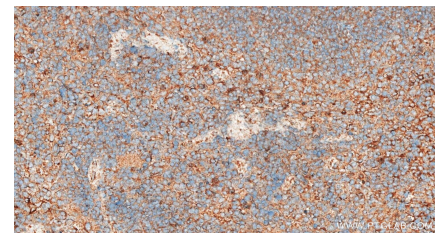
## Selected Validation Data



WB result of CARD9 antibody (10669-1-AP; 1:1000; incubated at room temperature for 1.5 hours) with sh-Control and sh-CARD9 transfected THP-1 cells. This data was developed using the same antibody clone with 10669-1-PBS in a different storage buffer formulation.



HL-60 cells were subjected to SDS PAGE followed by western blot with 10669-1-AP (CARD9 Antibody) at dilution of 1:1500 incubated at room temperature for 1.5 hours. This data was developed using the same antibody clone with 10669-1-PBS in a different storage buffer formulation.



Immunohistochemical analysis of paraffin-embedded mouse spleen tissue slide using 10669-1-AP (CARD9 antibody) at dilution of 1:200 (under 40x lens). Heat mediated antigen retrieval with Tris-EDTA buffer (pH 9.0). This data was developed using the same antibody clone with 10669-1-PBS in a different storage buffer formulation.