

For Research Use Only

Carboxypeptidase B2 Polyclonal antibody

Catalog Number: 10672-1-AP

3 Publications



Basic Information

Catalog Number:

10672-1-AP

Size:

150ul, Concentration: 350 ug/ml by Nanodrop and 267 ug/ml by Bradford method using BSA as the standard;

Source:

Rabbit

Isotype:

IgG

Immunogen Catalog Number:

AG1110

GenBank Accession Number:

BC007057

GeneID (NCBI):

1361

UNIPROT ID:

Q96LY4

Full Name:

carboxypeptidase B2 (plasma)

Calculated MW:

48 kDa

Observed MW:

53 kDa

Purification Method:

Antigen affinity purification

Recommended Dilutions:

WB 1:500-1:1000

IHC 1:250-1:1000

Applications

Tested Applications:

WB, IHC, ELISA

Cited Applications:

WB, IHC

Species Specificity:

human, mouse, rat

Cited Species:

mouse, rat

Note-IHC: suggested antigen retrieval with TE buffer pH 9.0; (*) Alternatively, antigen retrieval may be performed with citrate buffer pH 6.0

Positive Controls:

WB : mouse liver tissue,

IHC : human colon cancer tissue, human liver tissue, human liver cancer tissue

Background Information

CPB2(Carboxypeptidase B2) belongs to the peptidase M14 family. The CPB2 gene encoding TAFI is a candidate gene for blood pressure. Circulating CPB2 and platelets may potentially contribute to regulating the bioactivity of leukocyte chemoattractant chemerin (RARRES2), and further extend the molecular link between blood coagulation/fibrinolysis and CMKLR1-mediated immune responses. This protein has 2 isoforms produced by alternative splicing.

Notable Publications

Author	Pubmed ID	Journal	Application
Fei Wang	39730050	Int J Biol Macromol	IHC
Yuhan Wang	37978153	Neurochem Res	WB
Chung Myung-Chul MC	21395696	FEMS Immunol Med Microbiol	WB

Storage

Storage:

Store at -20°C. Stable for one year after shipment.

Storage Buffer:

PBS with 0.02% sodium azide and 50% glycerol pH 7.3.

Aliquoting is unnecessary for -20°C storage

*** 20ul sizes contain 0.1% BSA

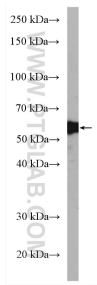
For technical support and original validation data for this product please contact:

T: 1 (888) 4PTGLAB (1-888-478-4522) (toll free in USA), or 1(312) 455-8498 (outside USA)

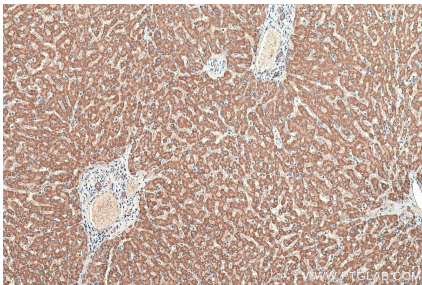
E: proteintech@ptglab.com
W: ptglab.com

This product is exclusively available under Proteintech Group brand and is not available to purchase from any other manufacturer.

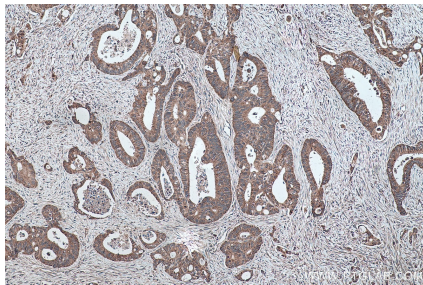
Selected Validation Data



mouse liver tissue were subjected to SDS PAGE followed by western blot with 10672-1-AP (Carboxypeptidase B2 antibody) at dilution of 1:600 incubated at room temperature for 1.5 hours.



Immunohistochemical analysis of paraffin-embedded human liver tissue slide using 10672-1-AP (Carboxypeptidase B2 antibody) at dilution of 1:500 (under 10x lens). Heat mediated antigen retrieval with Tris-EDTA buffer (pH 9.0).



Immunohistochemical analysis of paraffin-embedded human colon cancer tissue slide using 10672-1-AP (Carboxypeptidase B2 antibody) at dilution of 1:500 (under 10x lens). Heat mediated antigen retrieval with Tris-EDTA buffer (pH 9.0).