

For Research Use Only

# PAIP1 Polyclonal antibody

Catalog Number: 10675-1-AP

Featured Product

5 Publications



## Basic Information

**Catalog Number:**  
10675-1-AP

**Size:**  
150ul, Concentration: 650 µg/ml by Nanodrop and 253 µg/ml by Bradford method using BSA as the standard;

**Source:**  
Rabbit

**Isotype:**  
IgG

**Immunogen Catalog Number:**  
AG1070

**GenBank Accession Number:**  
BC005295

**GeneID (NCBI):**  
10605

**Full Name:**  
poly(A) binding protein interacting protein 1

**Calculated MW:**  
70 kDa

**Observed MW:**  
60 kDa, 51 kDa, 40 kDa

**Purification Method:**  
Antigen affinity purification

**Recommended Dilutions:**  
WB 1:500-1:2000  
IP 0.5-4.0 ug for IP and 1:200-1:1000 for WB  
IF 1:20-1:200

## Applications

**Tested Applications:**  
IF, IP, WB, ELISA

**Cited Applications:**  
IF, IHC, WB

**Species Specificity:**  
human, monkey

**Cited Species:**  
human

**Positive Controls:**

**WB:** HeLa cells, BxPC-3 cells, COS-7 cells

**IP:** HeLa cells,

**IF:** MCF-7 cells,

## Background Information

In initiation of translation in eukaryotes, binding of the small ribosomal subunit to mRNA requires recognition of the 5-prime cap structure by the cap-binding complex eIF4F. eIF4F consists of eIF4E, eIF4A, and eIF4G. Translation initiation is further regulated by the mRNA 3-prime poly(A) tail and the poly(A)-binding protein (PABC1). PAIP1 interacts with PABC1 and some eIF4 complexes [PMID:9548260]. It is a coactivator in the regulation of translation initiation of poly(A)-containing mRNAs, and associates with EIF4A and PABPC1 may potentiate contacts between mRNA termini [PMID:11051545].

## Notable Publications

Author	Pubmed ID	Journal	Application
Emma Jane Mead	26420881	Biochem J	WB
Yue He	30295753	Biol Reprod	WB, IHC, IF
Yixuan Wang	30496797	Hum Pathol	WB, IHC

## Storage

**Storage:**

Store at -20°C. Stable for one year after shipment.

**Storage Buffer:**

PBS with 0.02% sodium azide and 50% glycerol pH 7.3.

Aliquoting is unnecessary for -20°C storage

\*\*\* 20ul sizes contain 0.1% BSA

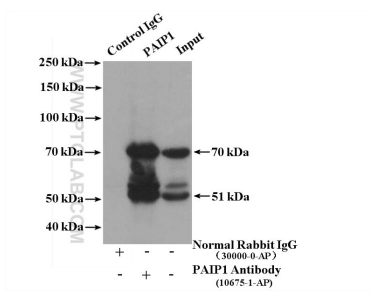
For technical support and original validation data for this product please contact:

T: 1 (888) 4PTGLAB (1-888-478-4522) (toll free in USA), or 1(312) 455-8498 (outside USA)

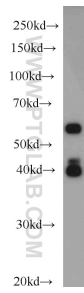
E: proteintech@ptglab.com  
W: ptglab.com

This product is exclusively available under Proteintech Group brand and is not available to purchase from any other manufacturer.

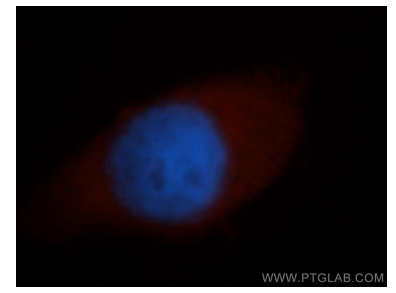
## Selected Validation Data



IP result of anti-PAIP1 (IP:10675-1-AP, 4 $\mu$ g; Detection:10675-1-AP 1:300) with HeLa cells lysate 3000  $\mu$ g.



HeLa cells were subjected to SDS PAGE followed by western blot with 10675-1-AP (PAIP1 antibody) at dilution of 1:1000 incubated at room temperature for 1.5 hours.



Immunofluorescent analysis of MCF-7 cells, using PAIP1 antibody 10675-1-AP at 1:50 dilution and Rhodamine-labeled goat anti-rabbit IgG (red). Blue pseudocolor = DAPI (fluorescent DNA dye).