

For Research Use Only

Lumican Polyclonal antibody, PBS Only

Catalog Number:10677-1-PBS



Basic Information

Catalog Number: 10677-1-PBS	GenBank Accession Number: BC007038	Purification Method: Antigen affinity purification
Size: 100ug , Concentration: 1 mg/ml by Nanodrop;	GeneID (NCBI): 4060	
Source: Rabbit	UNIPROT ID: P51884	
Isotype: IgG	Full Name: lumican	
Immunogen Catalog Number: AG1106	Calculated MW: 38 kDa	
	Observed MW: 50-90 kDa	

Applications

Tested Applications:
WB, IF-P, Indirect ELISA

Species Specificity:
human, mouse, rat

Background Information

Lumican (LUM), a member of the small leucine-rich proteoglycan (SLRP) family, is one of the major extracellular components in interstitial collagenous matrices of the corneal stroma, aorta, skin, skeletal muscle, lung, kidney, bone, cartilage, and intervertebral discs. SLRPs constitute an important fraction of noncollagenous extracellular matrix proteins and have important effects on cell behavior. Lumican regulates collagenous matrix assembly as a keratan sulfate proteoglycan in the cornea and may exist as a glycoprotein in the connective tissues of other organs. Posttranslational modifications lumican goes through can increase its apparent molecular weight to 50-90 kDa. Studies show that lumican participates in the maintenance of tissue homeostasis and modulates cellular functions including cell proliferation, migration, and differentiation. (PMID: 18949819; 22252641; 9761754; 22365843)

Storage

Storage:
Store at -80°C.

Storage Buffer:
PBS Only

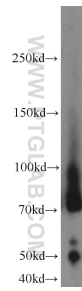
For technical support and original validation data for this product please contact:

T: 1 (888) 4PTGLAB (1-888-478-4522) (toll free in USA), or 1(312) 455-8498 (outside USA)

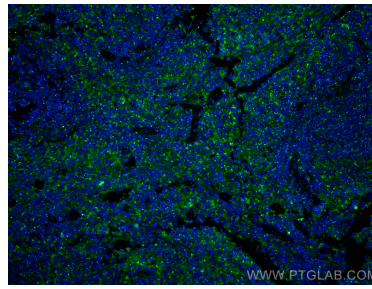
E: proteintech@ptglab.com
W: ptglab.com

This product is exclusively available under Proteintech Group brand and is not available to purchase from any other manufacturer.

Selected Validation Data



Jurkat cells were subjected to SDS PAGE followed by western blot with 10677-1-AP (Lumican antibody) at dilution of 1:800 incubated at room temperature for 1.5 hours. This data was developed using the same antibody clone with 10677-1-PBS in a different storage buffer formulation.



Immunofluorescent analysis of (4% PFA) fixed paraffin-embedded mouse spleen tissue using Lumican antibody (10677-1-AP) at dilution of 1:200 and Multi-rAb CoraLite® Plus 488-Goat Anti-Rabbit Recombinant Secondary Antibody (H+L) (RGAR002). Heat mediated antigen retrieval with Tris-EDTA buffer (pH 9.0). This data was developed using the same antibody clone with 10677-1-PBS in a different storage buffer formulation.