

For Research Use Only

NUDC Polyclonal antibody

Catalog Number: 10681-1-AP

Featured Product

5 Publications



Basic Information

Catalog Number:

10681-1-AP

Size:

150ul, Concentration: 750 ug/ml by Nanodrop and 380 ug/ml by Bradford method using BSA as the standard;

Source:

Rabbit

Isotype:

IgG

Immunogen Catalog Number:

AG0998

GenBank Accession Number:

BC006147

GeneID (NCBI):

10726

UNIPROT ID:

Q9Y266

Full Name:

nuclear distribution gene C homolog (A. nidulans)

Calculated MW:

38 kDa

Observed MW:

42-45 kDa

Purification Method:

Antigen affinity purification

Recommended Dilutions:

WB 1:500-1:2000

IP 0.5-4.0 ug for 1.0-3.0 mg of total protein lysate

IHC 1:20-1:200

IF/ICC 1:200-1:800

Applications

Tested Applications:

WB, IHC, IF/ICC, IP, ELISA

Cited Applications:

WB, IHC, IF

Species Specificity:

human

Cited Species:

human, mouse

Note-IHC: suggested antigen retrieval with TE buffer pH 9.0; (*) Alternatively, antigen retrieval may be performed with citrate buffer pH 6.0

Positive Controls:

WB : HepG2 cells, HEK-293 cells, HeLa cells, K-562 cells, SH-SY5Y cells

IP : HEK-293 cells,

IHC : human pancreas cancer tissue,

IF/ICC : HeLa cells, HEK-293 cells, HepG2 cells

Background Information

Nuclear distribution protein C (NudC) is a highly conserved dynein/dynactin associated protein implicated in mitosis and cytokinesis. NudC is localized on major mitotic structures, and is involved in regulating spindle formation stability of kinetochore microtubule attachments, and chromosomes congression in early mitosis. NudC also is required for multi-protein transport along axons in neurons.

Notable Publications

Author	Pubmed ID	Journal	Application
Senyang Cao	32920902	Reprod Domest Anim	WB, IHC
Tai Young Kim	25332235	Mol Cell Biol	WB
Min Liu	34262899	Front Cell Dev Biol	WB

Storage

Storage:

Store at -20°C. Stable for one year after shipment.

Storage Buffer:

PBS with 0.02% sodium azide and 50% glycerol pH 7.3.

Aliquoting is unnecessary for -20°C storage

*** 20ul sizes contain 0.1% BSA

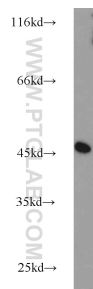
For technical support and original validation data for this product please contact:

T: 1 (888) 4PTGLAB (1-888-478-4522) (toll free in USA), or 1(312) 455-8498 (outside USA)

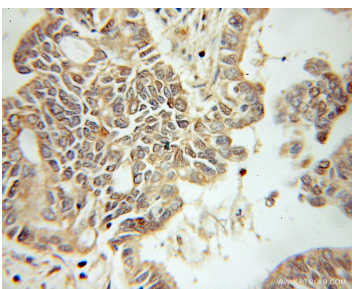
E: proteintech@ptglab.com
W: ptglab.com

This product is exclusively available under Proteintech Group brand and is not available to purchase from any other manufacturer.

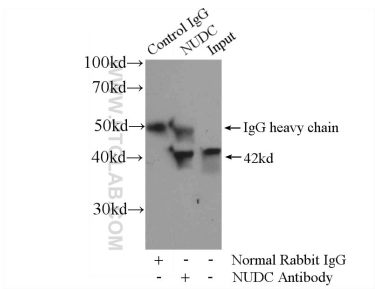
Selected Validation Data



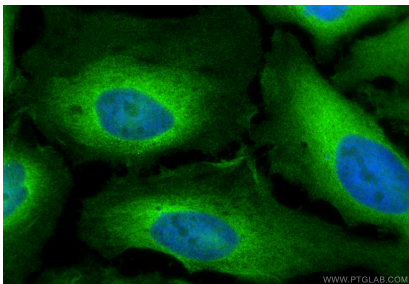
HepG2 cells were subjected to SDS PAGE followed by western blot with 10681-1-AP (NUDC antibody) at dilution of 1:1000 incubated at room temperature for 1.5 hours.



Immunohistochemical analysis of paraffin-embedded human pancreas cancer using 10681-1-AP (NUDC antibody) at dilution of 1:50 (under 10x lens).



IP result of anti-NUDC (IP:10681-1-AP, 4ug; Detection:10681-1-AP 1:1000) with HEK-293 cells lysate 2800ug.



Immunofluorescent analysis of (4% PFA) fixed HeLa cells using NUDC antibody (10681-1-AP) at dilution of 1:400 and Coralite®488-Conjugated Goat Anti-Rabbit IgG(H+L) (SA00013-2).