

For Research Use Only

NUDC Polyclonal antibody, PBS Only

Catalog Number: 10681-1-PBS

Featured Product



Basic Information

Catalog Number:

10681-1-PBS

Size:

100ug, Concentration: 1 mg/ml by Nanodrop;

Source:

Rabbit

Isotype:

IgG

Immunogen Catalog Number:

AG0998

GenBank Accession Number:

BC006147

GeneID (NCBI):

10726

UNIPROT ID:

Q9Y266

Full Name:

nuclear distribution gene C homolog (A. nidulans)

Calculated MW:

38 kDa

Observed MW:

42-45 kDa

Purification Method:

Antigen affinity purification

Applications

Tested Applications:

WB, IHC, IF/ICC, IP, Indirect ELISA

Species Specificity:

human

Background Information

Nuclear distribution protein C (NudC) is a highly conserved dynein/dynactin associated protein implicated in mitosis and cytokinesis. NudC is localized on major mitotic structures, and is involved in regulating spindle formation stability of kinetochore microtubule attachments, and chromosomes congression in early mitosis. NudC also is required for multi-protein transport along axons in neurons.

Storage

Storage:

Store at -80°C.

Storage Buffer:

PBS only, pH7.3

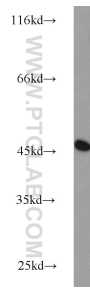
For technical support and original validation data for this product please contact:

T: 1 (888) 4PTGLAB (1-888-478-4522) (toll free in USA), or 1(312) 455-8498 (outside USA)

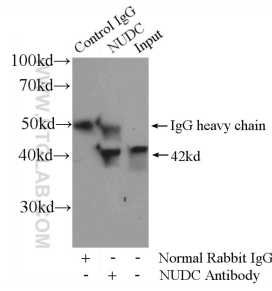
E: proteintech@ptglab.com
W: ptglab.com

This product is exclusively available under Proteintech Group brand and is not available to purchase from any other manufacturer.

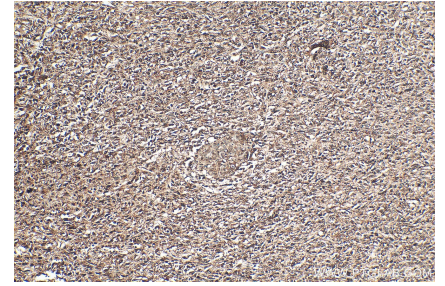
Selected Validation Data



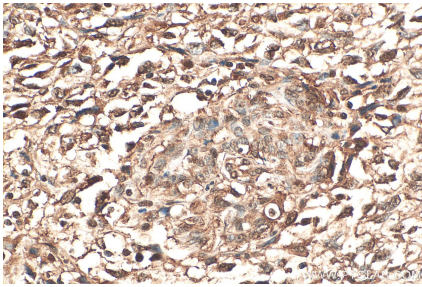
HepG2 cells were subjected to SDS PAGE followed by western blot with 10681-1-AP (NUDC antibody) at dilution of 1:1000 incubated at room temperature for 1.5 hours. This data was developed using the same antibody clone with 10681-1-PBS in a different storage buffer formulation.



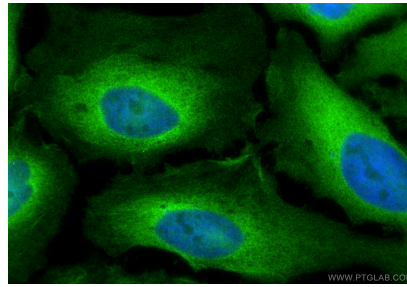
IP result of anti-NUDC (IP:10681-1-AP, 4ug; Detection:10681-1-AP 1:1000) with HEK-293 cells lysate 2800ug. This data was developed using the same antibody clone with 10681-1-PBS in a different storage buffer formulation.



Immunohistochemical analysis of paraffin-embedded human pancreas cancer tissue slide using 10681-1-AP (NUDC antibody) at dilution of 1:200 (under 10x lens). Heat mediated antigen retrieval with Tris-EDTA buffer (pH 9.0). This data was developed using the same antibody clone with 10681-1-PBS in a different storage buffer formulation.



Immunohistochemical analysis of paraffin-embedded human pancreas cancer tissue slide using 10681-1-AP (NUDC antibody) at dilution of 1:200 (under 40x lens). Heat mediated antigen retrieval with Tris-EDTA buffer (pH 9.0). This data was developed using the same antibody clone with 10681-1-PBS in a different storage buffer formulation.



Immunofluorescent analysis of (4% PFA) fixed HeLa cells using NUDC antibody (10681-1-AP) at dilution of 1:400 and CoraLite®488-Conjugated Goat Anti-Rabbit IgG(H+L) (SA00013-2). This data was developed using the same antibody clone with 10681-1-PBS in a different storage buffer formulation.