

For Research Use Only

# RERG Polyclonal antibody

Catalog Number: 10687-1-AP

Featured Product

5 Publications



## Basic Information

### Catalog Number:

10687-1-AP

### Size:

150ul, Concentration: 300 ug/ml by Nanodrop and 200 ug/ml by Bradford method using BSA as the standard;

### Source:

Rabbit

### Isotype:

IgG

### Immunogen Catalog Number:

AG1041

### GenBank Accession Number:

BC007997

### GeneID (NCBI):

85004

### UNIPROT ID:

Q96A58

### Full Name:

RAS-like, estrogen-regulated, growth inhibitor

### Calculated MW:

23 kDa

### Observed MW:

23-26 kDa

### Purification Method:

Antigen affinity purification

### Recommended Dilutions:

WB 1:1000-1:6000

## Applications

### Tested Applications:

WB, ELISA

### Cited Applications:

WB, IF, IHC

### Species Specificity:

human, mouse

### Cited Species:

human

### Positive Controls:

WB: NIH/3T3 cells, MCF-7 cells

## Background Information

RERG (Ras-related and estrogen-regulated growth inhibitor), a gene that encodes a small GTP binding and hydrolyzing protein (GTPase) of the Ras superfamily, is a novel gene that was first reported in breast cancer. RERG gene expression is stimulated by the estrogen receptor alpha (ERalpha), and RERG gene expression is absent in ER-negative breast cancer. RERG can bind and hydrolyze GTP as a GTP/GDP molecular switch, and RERG has been shown to possess growth inhibitory activity in breast cancer cells.

## Notable Publications

Author	Pubmed ID	Journal	Application
Ying Xiong	30431143	Oncol Rep	
Lucie Coillard	35847954	Front Oncol	WB, IF
Xujuan Zhang	37457559	Front Med (Lausanne)	IHC

## Storage

### Storage:

Store at -20°C. Stable for one year after shipment.

### Storage Buffer:

PBS with 0.02% sodium azide and 50% glycerol pH 7.3.

Aliquoting is unnecessary for -20°C storage

\*\*\* 20ul sizes contain 0.1% BSA

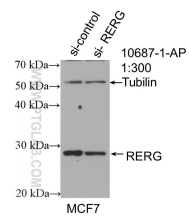
For technical support and original validation data for this product please contact:

T: 1 (888) 4PTGLAB (1-888-478-4522) (toll free in USA), or 1(312) 455-8498 (outside USA)

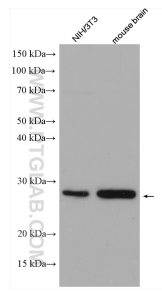
E: [proteintech@ptglab.com](mailto:proteintech@ptglab.com)  
W: [ptglab.com](http://ptglab.com)

This product is exclusively available under Proteintech Group brand and is not available to purchase from any other manufacturer.

Selected Validation Data



WB result of REG antibody (10687-1-AP; 1:1000; incubated at room temperature for 1.5 hours) with sh-Control and sh-REG transfected MCF-7 cells.



Various lysates were subjected to SDS PAGE followed by western blot with 10687-1-AP (REG antibody) at dilution of 1:3000 incubated at room temperature for 1.5 hours.