

For Research Use Only

STRADB Polyclonal antibody

Catalog Number:10688-1-AP



Basic Information

Catalog Number: 10688-1-AP	GenBank Accession Number: BC008302	Purification Method: Antigen affinity purification
Size: 150ul , Concentration: 300 ug/ml by Nanodrop and 220 ug/ml by Bradford method using BSA as the standard;	GeneID (NCBI): 55437	Recommended Dilutions: WB 1:200-1:1000 IHC 1:100-1:400
Source: Rabbit	UNIPROT ID: Q9C0K7	
Isotype: IgG	Full Name: STE20-related kinase adaptor beta	
Immunogen Catalog Number: AG1040	Calculated MW: 47 kDa	
	Observed MW: 28-31 kDa, 38-42 kDa	

Applications

Tested Applications: WB, IHC, ELISA	Positive Controls:
Species Specificity: human, mouse, rat	WB : Raji cells, mouse heart tissue
	IHC : human heart tissue,

Note-IHC: suggested antigen retrieval with TE buffer pH 9.0; (*) Alternatively, antigen retrieval may be performed with citrate buffer pH 6.0

Background Information

The 418 amino acid STRADB protein, which is also named as ALS2CR2 and ILPIP, contains a putative N-terminal ATP-binding site, a protein kinase domain, and several C-terminal phosphorylation sites. STRADB potentiates the antiapoptotic activity of XIAP by enhancing XIAP-mediated activation of JNK1 and other JNK family members, but not by modulating XIAP-mediated caspase inhibition. This protein has 3 isoforms produced by alternative splicing with the MW of 47 kDa, 42 kDa and 31 kDa.

Storage

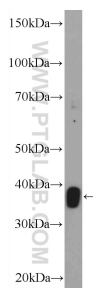
Storage:
Store at -20°C. Stable for one year after shipment.
Storage Buffer:
PBS with 0.02% sodium azide and 50% glycerol pH 7.3.
Aliquoting is unnecessary for -20°C storage

***** 20ul sizes contain 0.1% BSA**

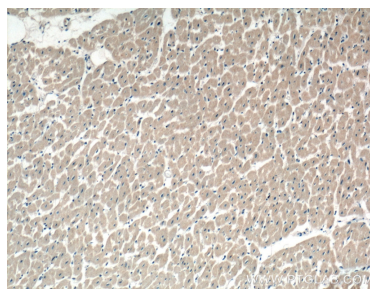
For technical support and original validation data for this product please contact:
T: 1 (888) 4PTGLAB (1-888-478-4522) (toll free in USA), or 1(312) 455-8498 (outside USA)
E: proteintech@ptglab.com
W: ptglab.com

This product is exclusively available under Proteintech Group brand and is not available to purchase from any other manufacturer.

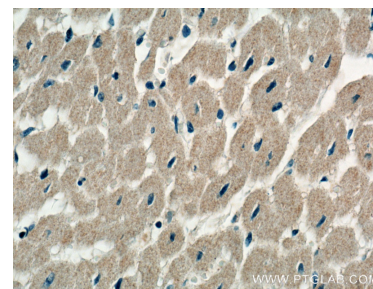
Selected Validation Data



Raji cells were subjected to SDS PAGE followed by western blot with 10688-1-AP (STRADB Antibody) at dilution of 1:300 incubated at 4 degree celsius over night.



Immunohistochemical analysis of paraffin-embedded human heart tissue slide using 10688-1-AP (STRADB Antibody) at dilution of 1:200 (under 10x lens).



Immunohistochemical analysis of paraffin-embedded human heart tissue slide using 10688-1-AP (STRADB Antibody) at dilution of 1:200 (under 40x lens).