

For Research Use Only

# E2F6 Polyclonal antibody

Catalog Number: 10691-1-AP



## Basic Information

**Catalog Number:**

10691-1-AP

**Size:**

150ul , Concentration: 350 ug/ml by Nanodrop;

**Source:**

Rabbit

**Isotype:**

IgG

**Immunogen Catalog Number:**

AG1029

**GenBank Accession Number:**

BC008348

**GeneID (NCBI):**

1876

**UNIPROT ID:**

O75461

**Full Name:**

E2F transcription factor 6

**Calculated MW:**

32 kDa

**Observed MW:**

37 kDa

**Purification Method:**

Antigen affinity purification

**Recommended Dilutions:**

WB 1:500-1:2000

## Applications

**Tested Applications:**

WB, ELISA

**Species Specificity:**

human

**Positive Controls:**

WB : A549 cells, HepG2 cells, HuH-7 cells, K-562 cells

## Background Information

E2F6 is a member of the E2F family of transcription factors, which play important roles in cell cycle regulation and gene expression. E2F6 is highly expressed in many types of cancer and is associated with poor prognosis. It is involved in the regulation of cell proliferation and can promote tumor growth. E2F6 knockdown significantly reduces the proliferative ability of glioma cells (PMID: 38071912). Additionally, E2F6 is related to immune activation markers, tumor immune cell infiltration, and immune regulators, making it a potential biomarker for predicting the response to cancer immunotherapy.

## Storage

**Storage:**

Store at -20°C. Stable for one year after shipment.

**Storage Buffer:**

PBS with 0.02% sodium azide and 50% glycerol pH 7.3.

Aliquoting is unnecessary for -20°C storage

\*\*\* 20ul sizes contain 0.1% BSA

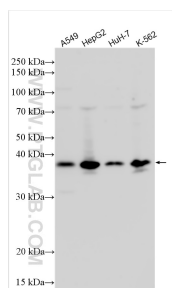
For technical support and original validation data for this product please contact:

T: 1 (888) 4PTGLAB (1-888-478-4522) (toll free in USA), or 1(312) 455-8498 (outside USA)

E: [proteintech@ptglab.com](mailto:proteintech@ptglab.com)  
W: [ptglab.com](http://ptglab.com)

This product is exclusively available under Proteintech Group brand and is not available to purchase from any other manufacturer.

## Selected Validation Data



Various lysates were subjected to SDS PAGE followed by western blot with 10691-1-AP (E2F6 antibody) at dilution of 1:1000 incubated at room temperature for 1.5 hours.