

For Research Use Only

E2F6 Polyclonal antibody, PBS Only

Catalog Number:10691-1-PBS



Basic Information

Catalog Number:

10691-1-PBS

Size:

100ug , Concentration: 1 mg/ml by Nanodrop;

Source:

Rabbit

Isotype:

IgG

Immunogen Catalog Number:

AG1029

GenBank Accession Number:

BC008348

GeneID (NCBI):

1876

UNIPROT ID:

O75461

Full Name:

E2F transcription factor 6

Calculated MW:

32 kDa

Observed MW:

37 kDa

Purification Method:

Antigen affinity purification

Applications

Tested Applications:

WB, Indirect ELISA

Species Specificity:

human

Background Information

E2F6 is a member of the E2F family of transcription factors, which play important roles in cell cycle regulation and gene expression. E2F6 is highly expressed in many types of cancer and is associated with poor prognosis. It is involved in the regulation of cell proliferation and can promote tumor growth. E2F6 knockdown significantly reduces the proliferative ability of glioma cells (PMID: 38071912). Additionally, E2F6 is related to immune activation markers, tumor immune cell infiltration, and immune regulators, making it a potential biomarker for predicting the response to cancer immunotherapy.

Storage

Storage:

Store at -80°C.

Storage Buffer:

PBS only, pH7.3

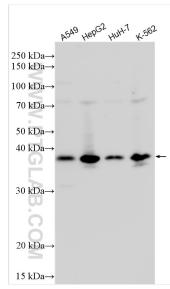
For technical support and original validation data for this product please contact:

T: 1 (888) 4PTGLAB (1-888-478-4522) (toll free in USA), or 1(312) 455-8498 (outside USA)

E: proteintech@ptglab.com
W: ptglab.com

This product is exclusively available under Proteintech Group brand and is not available to purchase from any other manufacturer.

Selected Validation Data



Various lysates were subjected to SDS PAGE followed by western blot with 10691-1-AP (E2F6 antibody) at dilution of 1:1000 incubated at room temperature for 1.5 hours. This data was developed using the same antibody clone with 10691-1-PBS in a different storage buffer formulation.