

For Research Use Only

MPHOSPH6 Polyclonal antibody

Catalog Number: 10695-1-AP

1 Publications



Basic Information

Catalog Number:

10695-1-AP

Size:

150ul, Concentration: 550 ug/ml by Nanodrop and 333 ug/ml by Bradford method using BSA as the standard;

Source:

Rabbit

Isotype:

IgG

Immunogen Catalog Number:

AG1080

GenBank Accession Number:

BC005242

GeneID (NCBI):

10200

UNIPROT ID:

Q99547

Full Name:

M-phase phosphoprotein 6

Calculated MW:

19 kDa

Observed MW:

19 kDa

Purification Method:

Antigen affinity purification

Recommended Dilutions:

WB 1:200-1:1000

IP 0.5-4.0 ug for 1.0-3.0 mg of total protein lysate

IHC 1:20-1:200

Applications

Tested Applications:

WB, IP, IHC, ELISA

Species Specificity:

human

Note-IHC: suggested antigen retrieval with TE buffer pH 9.0; (*) Alternatively, antigen retrieval may be performed with citrate buffer pH 6.0

Positive Controls:

WB: MCF7 cells, HeLa cells, MCF-7 cells, MDA-MB-453s cells

IP: HeLa cells,

IHC: human breast cancer tissue,

Notable Publications

Author	Pubmed ID	Journal	Application
Rui-Rui Peng	32003502	Cell Prolif	

Storage

Storage:

Store at -20°C. Stable for one year after shipment.

Storage Buffer:

PBS with 0.02% sodium azide and 50% glycerol pH 7.3.

Aliquoting is unnecessary for -20°C storage

*** 20ul sizes contain 0.1% BSA

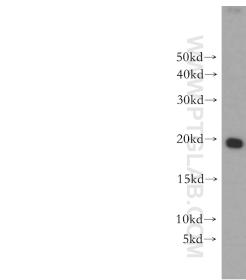
For technical support and original validation data for this product please contact:

T: 1 (888) 4PTGLAB (1-888-478-4522) (toll free in USA), or 1(312) 455-8498 (outside USA)

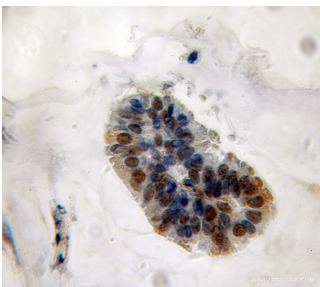
E: proteintech@ptglab.com
W: ptglab.com

This product is exclusively available under Proteintech Group brand and is not available to purchase from any other manufacturer.

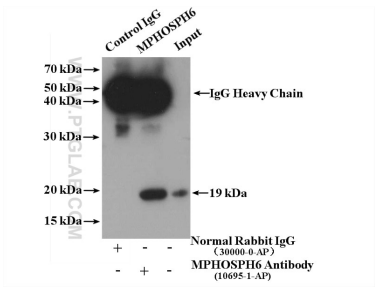
Selected Validation Data



MCF-7 cells were subjected to SDS PAGE followed by western blot with 10695-1-AP (MPHOSPH6 antibody) at dilution of 1:300 incubated at room temperature for 1.5 hours.



Immunohistochemical analysis of paraffin-embedded human breast cancer using 10695-1-AP (MPHOSPH6 antibody) at dilution of 1:50 (under 10x lens).



IP result of anti-MPHOSPH6 (IP:10695-1-AP, 4ug; Detection:10695-1-AP 1:500) with HeLa cells lysate 3000 ug.