

For Research Use Only

RCC1 Polyclonal antibody

Catalog Number: 10697-1-AP

Featured Product



Basic Information

Catalog Number:

10697-1-AP

Size:

150ul, Concentration: 400 ug/ml by Nanodrop and 333 ug/ml by Bradford method using BSA as the standard;

Source:

Rabbit

Isotype:

IgG

Immunogen Catalog Number:

AG1042

GenBank Accession Number:

BC007300

GeneID (NCBI):

1104

UNIPROT ID:

P18754

Full Name:

regulator of chromosome condensation 1

Calculated MW:

45 kDa, 48 kDa

Observed MW:

68 kDa

Purification Method:

Antigen affinity purification

Recommended Dilutions:

WB 1:1000-1:6000

IP 0.5-4.0 ug for 1.0-3.0 mg of total protein lysate

IHC 1:50-1:500

Applications

Tested Applications:

WB, IP, IHC, ELISA

Species Specificity:

human, mouse, rat

Note-IHC: suggested antigen retrieval with TE buffer pH 9.0; (*) Alternatively, antigen retrieval may be performed with citrate buffer pH 6.0

Positive Controls:

WB: A431 cells, Jurkat cells, mouse testis tissue, Raji cells, SGC-7901 cells, HeLa cells, HEK-293 cells, HEK-293T cells

IP: HeLa cells,

IHC: human ovary tumor tissue, human urothelial carcinoma tissue

Background Information

CHC1, also named as RCC1, SNHG3-RCC1, promotes the exchange of ran-bound gdp by gtp. It is involved in the regulation of onset of chromosome condensation in the S-phase. Phosphorylation of RCC1 on serines located in or near its nuclear localization signal activates RCC1 to generate RanGTP on mitotic chromosomes, which is required for spindle assembly and chromosome segregation. This antibody is a rabbit polyclonal antibody raised against residues near the C terminus of human RCC1. The geneID has updated as 1104 recently.

Storage

Storage:

Store at -20°C. Stable for one year after shipment.

Storage Buffer:

PBS with 0.02% sodium azide and 50% glycerol pH 7.3.

Aliquoting is unnecessary for -20°C storage

*** 20ul sizes contain 0.1% BSA

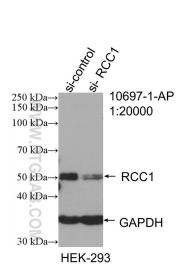
For technical support and original validation data for this product please contact:

T: 1 (888) 4PTGLAB (1-888-478-4522) (toll free in USA), or 1(312) 455-8498 (outside USA)

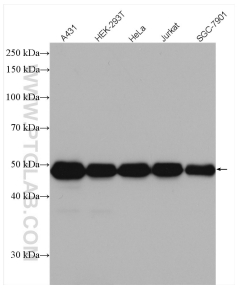
E: proteintech@ptglab.com
W: ptglab.com

This product is exclusively available under Proteintech Group brand and is not available to purchase from any other manufacturer.

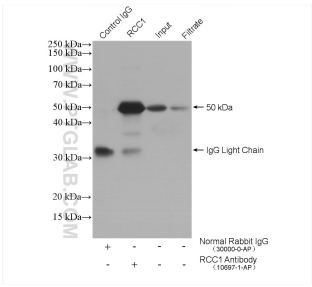
Selected Validation Data



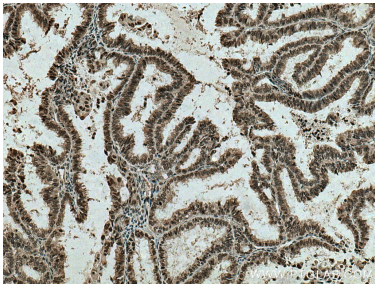
WB result of RCC1 antibody (10697-1-AP; 1:20000; incubated at room temperature for 1.5 hours) with sh-Control and sh-RCC1 transfected HEK-293 cells.



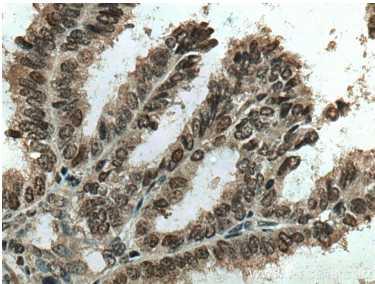
Various lysates were subjected to SDS PAGE followed by western blot with 10697-1-AP (RCC1 antibody) at dilution of 1:3000 incubated at room temperature for 1.5 hours.



IP result of anti-RCC1 (IP:10697-1-AP, 4ug; Detection:10697-1-AP 1:500) with HeLa cells lysate 1600 ug.



Immunohistochemical analysis of paraffin-embedded human ovary tumor tissue slide using 10697-1-AP (RCC1 antibody) at dilution of 1:200 (under 10x lens). Heat mediated antigen retrieval with Tris-EDTA buffer (pH 9.0).



Immunohistochemical analysis of paraffin-embedded human ovary tumor tissue slide using 10697-1-AP (RCC1 antibody) at dilution of 1:200 (under 40x lens). Heat mediated antigen retrieval with Tris-EDTA buffer (pH 9.0).