

For Research Use Only

# KMO Polyclonal antibody

Catalog Number: 10698-1-AP

Featured Product

24 Publications



## Basic Information

<b>Catalog Number:</b> 10698-1-AP	<b>GenBank Accession Number:</b> BC005297	<b>Purification Method:</b> Antigen affinity purification
<b>Size:</b> 150ul , Concentration: 900 µg/ml by Nanodrop;	<b>GeneID (NCBI):</b> 8564	<b>Recommended Dilutions:</b> IHC 1:50-1:500 IF 1:10-1:100
<b>Source:</b> Rabbit	<b>Full Name:</b> kynurenine 3-monooxygenase (kynurenine 3-hydroxylase)	
<b>Isotype:</b> IgG	<b>Calculated MW:</b> 486 aa, 56 kDa	
<b>Immunogen Catalog Number:</b> AG1109	<b>Observed MW:</b> 56 kDa	

## Applications

<b>Tested Applications:</b> IF, IHC, ELISA	<b>Positive Controls:</b>
<b>Cited Applications:</b> IF, IHC, WB	<b>IHC :</b> human kidney tissue, human prostate cancer tissue, human breast cancer tissue, mouse heart tissue
<b>Species Specificity:</b> human, mouse	<b>IF :</b> HepG2 cells, MCF-7 cells
<b>Cited Species:</b> human, rat, mouse	

**Note-IHC: suggested antigen retrieval with TE buffer pH 9.0; (\*) Alternatively, antigen retrieval may be performed with citrate buffer pH 6.0**

## Background Information

KMO (Kynurenine 3-monooxygenase) is an NADPH-dependent flavin monooxygenase, catalysing the hydroxylation of the L-kynurenine to form L-3-hydroxykynurenine. KMO is a membrane protein located on the outer membrane of mitochondria. Tissue distribution studies have revealed that, in rats, highest enzyme activity is found in kidney and liver, with brain having the least activity in comparison to peripheral organs (PMID: 9237672).

## Notable Publications

Author	Pubmed ID	Journal	Application
NANAKA MORITA	34584567	Oncol Lett	WB,IHC
Aisha M. Swaih	36140394	Biomedicines	WB,IF
Ewelina Rojewska	26524415	Neuropharmacology	WB

## Storage

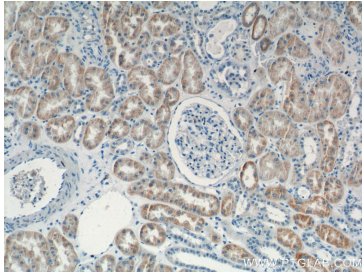
**Storage:**  
Store at -20°C. Stable for one year after shipment.  
**Storage Buffer:**  
PBS with 0.02% sodium azide and 50% glycerol pH 7.3.  
Aliquoting is unnecessary for -20°C storage

\*\*\* 20ul sizes contain 0.1% BSA

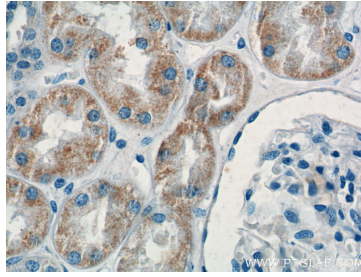
For technical support and original validation data for this product please contact:  
T: 1 (888) 4PTGLAB (1-888-478-4522) (toll free in USA), or 1(312) 455-8498 (outside USA)  
E: proteintech@ptglab.com  
W: ptglab.com

This product is exclusively available under Proteintech Group brand and is not available to purchase from any other manufacturer.

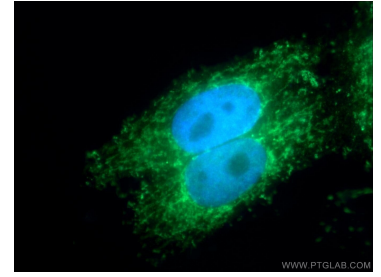
## Selected Validation Data



Immunohistochemical analysis of paraffin-embedded human kidney tissue slide using 10698-1-AP (KMO Antibody) at dilution of 1:200 (under 10x lens).

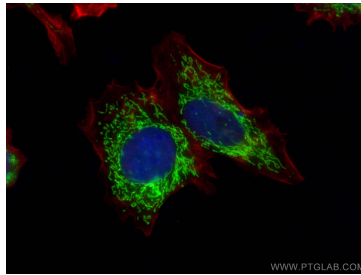


Immunohistochemical analysis of paraffin-embedded human kidney tissue slide using 10698-1-AP (KMO Antibody) at dilution of 1:200 (under 40x lens).



Immunofluorescent analysis of HepG2 cells using 10698-1-AP (KMO antibody) at dilution of 1:25 and Alexa Fluor 488-conjugated AffiniPure Goat Anti-Rabbit IgG(H+L).

Immunofluorescent analysis of (4% PFA) fixed MCF-7 cells using KMO antibody (10698-1-AP) at dilution of 1:200 and CoraLite®488-Conjugated AffiniPure Goat Anti-Rabbit IgG(H+L), CL594-phalloidin (red).



Immunofluorescent analysis of (4% PFA) fixed MCF-7 cells using KMO antibody (10698-1-AP) at dilution of 1:200 and CoraLite®488-Conjugated AffiniPure Goat Anti-Rabbit IgG(H+L), CL594-phalloidin (red).