

For Research Use Only

SUMO2/3 Polyclonal antibody

Catalog Number: 10699-1-AP

1 Publications



Basic Information

Catalog Number:

10699-1-AP

Size:

150ul, Concentration: 330 ug/ml by Nanodrop;

Source:

Rabbit

Isotype:

IgG

Immunogen Catalog Number:

AG1135

GenBank Accession Number:

BC008420

GeneID (NCBI):

6612

UNIPROT ID:

P55854

Full Name:

SMT3 suppressor of mif two 3 homolog 3 (S. cerevisiae)

Calculated MW:

12 kDa

Observed MW:

11-20 kDa

Purification Method:

Antigen affinity purification

Recommended Dilutions:

WB 1:500-1:1000

Applications

Tested Applications:

WB, ELISA

Cited Applications:

WB, IP

Species Specificity:

human

Cited Species:

human

Positive Controls:

WB : HEK-293 cells, HepG2 cells

Background Information

Ubiquitin is most famous for its function in targeting proteins for degradation by the 26S proteasome, ubiquitin needs to be attached to a substrate in chains (polyubiquitylation) before being recognized by proteasome. Similarly, SUMO (small ubiquitin-related modifier) can be linked to substrates in chains (polysumoylation), SUMO modification has been implicated in many important cellular processes including the control of genome stability, signal transduction, targeting to and formation of nuclear compartments, cell cycle and meiosis. There are 4 confirmed SUMO isoforms in human, SUMO-1, SUMO-2, SUMO-3 and SUMO-4. SUMO-2 and SUMO-3 are nearly identical but are distinct from SUMO-1. SUMO2/3 conjugation was recently widely involved in neuroprotective activities. A substitution (M55V) of SUMO4 was strongly associated with the pathogenesis of type 1 diabetes (T1D) involving NF kappa B related mechanisms.

Notable Publications

Author	Pubmed ID	Journal	Application
Xiaodong Deng	39581558	Biochim Biophys Acta Mol Basis Dis	WB,IP

Storage

Storage:

Store at -20°C. Stable for one year after shipment.

Storage Buffer:

PBS with 0.02% sodium azide and 50% glycerol pH 7.3.

Aliquoting is unnecessary for -20°C storage

*** 20ul sizes contain 0.1% BSA

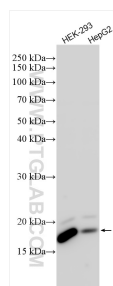
For technical support and original validation data for this product please contact:

T: 1 (888) 4PTGLAB (1-888-478-4522) (toll free in USA), or 1(312) 455-8498 (outside USA)

E: proteintech@ptglab.com
W: ptglab.com

This product is exclusively available under Proteintech Group brand and is not available to purchase from any other manufacturer.

Selected Validation Data



Various lysates were subjected to SDS PAGE followed by western blot with 10699-1-AP (SUMO2/3 antibody) at dilution of 1:800 incubated at room temperature for 1.5 hours.