

For Research Use Only

# C1D Polyclonal antibody

Catalog Number: 10711-1-AP **1 Publications**



## Basic Information

<b>Catalog Number:</b> 10711-1-AP	<b>GenBank Accession Number:</b> BC005235	<b>Purification Method:</b> Antigen affinity purification
<b>Size:</b> 150ul , Concentration: 750 µg/ml by Nanodrop and 400 µg/ml by Bradford method using BSA as the standard;	<b>GeneID (NCBI):</b> 10438	<b>Recommended Dilutions:</b> WB 1:200-1:1000 IP 0.5-4.0 ug for IP and 1:200-1:1000 for WB
<b>Source:</b> Rabbit	<b>Full Name:</b> C1D nuclear receptor co-repressor	<b>Calculated MW:</b> 16 kDa
<b>Isotype:</b> IgG		
<b>Immunogen Catalog Number:</b> AG1121		

## Applications

<b>Tested Applications:</b> IHC, IP, WB, ELISA	<b>Positive Controls:</b> WB : DU 145 cells, IP : DU 145 cells, IHC : human prostate cancer tissue,
<b>Cited Applications:</b> WB	
<b>Species Specificity:</b> human	
<b>Cited Species:</b> mouse	
<b>Note-IHC: suggested antigen retrieval with TE buffer pH 9.0; (*) Alternatively, antigen retrieval may be performed with citrate buffer pH 6.0</b>	

## Background Information

### Notable Publications

Author	Pubmed ID	Journal	Application
Di Lu	36417796	Redox Biol	WB

## Storage

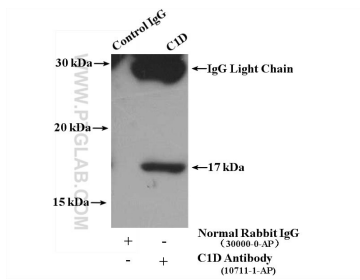
**Storage:**  
Store at -20°C. Stable for one year after shipment.  
**Storage Buffer:**  
PBS with 0.02% sodium azide and 50% glycerol pH 7.3.  
Aliquoting is unnecessary for -20°C storage

\*\*\* 20ul sizes contain 0.1% BSA

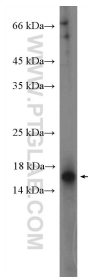
For technical support and original validation data for this product please contact:  
T: 1 (888) 4PTGLAB (1-888-478-4522) (toll free in USA), or 1(312) 455-8498 (outside USA)  
E: proteintech@ptglab.com  
W: ptglab.com

This product is exclusively available under Proteintech Group brand and is not available to purchase from any other manufacturer.

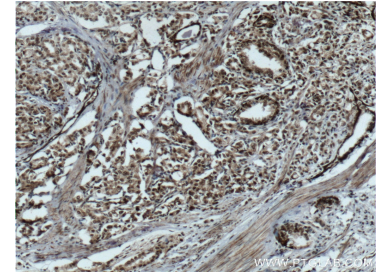
## Selected Validation Data



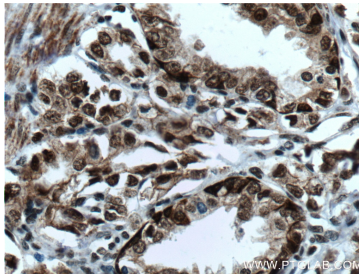
IP result of anti-C1D (IP:10711-1-AP, 4 $\mu$ g; Detection:10711-1-AP 1:300) with DU 145 cells lysate 1800  $\mu$ g.



DU 145 cells were subjected to SDS PAGE followed by western blot with 10711-1-AP (C1D Antibody) at dilution of 1:300 incubated at room temperature for 1.5 hours.



Immunohistochemical analysis of paraffin-embedded human prostate cancer tissue slide using 10711-1-AP (C1D Antibody) at dilution of 1:200 (under 10 $\times$  lens). Heat mediated antigen retrieval with Tris-EDTA buffer (pH 9.0).



Immunohistochemical analysis of paraffin-embedded human prostate cancer tissue slide using 10711-1-AP (C1D Antibody) at dilution of 1:200 (under 40 $\times$  lens). Heat mediated antigen retrieval with Tris-EDTA buffer (pH 9.0).