

For Research Use Only

# Cyclin H Polyclonal antibody

Catalog Number: 10718-1-AP



## Basic Information

### Catalog Number:

10718-1-AP

### Size:

150ul, Concentration: 850 ug/ml by Nanodrop and 400 ug/ml by Bradford method using BSA as the standard;

### Source:

Rabbit

### Isotype:

IgG

### Immunogen Catalog Number:

AG1088

### GenBank Accession Number:

BC005280

### GeneID (NCBI):

902

### UNIPROT ID:

P51946

### Full Name:

cyclin H

### Calculated MW:

38 kDa

### Observed MW:

38 kDa

### Purification Method:

Antigen affinity purification

### Recommended Dilutions:

WB 1:500-1:2000

IP 0.5-4.0 ug for 1.0-3.0 mg of total protein lysate

IHC 1:1000-1:4000

IF/ICC 1:200-1:800

## Applications

### Tested Applications:

WB, IHC, IF/ICC, FC (Intra), IP, ELISA

### Species Specificity:

human, mouse, rat

**Note-IHC: suggested antigen retrieval with TE buffer pH 9.0; (\*) Alternatively, antigen retrieval may be performed with citrate buffer pH 6.0**

### Positive Controls:

**WB** : A431 cells, A375 cells, mouse brain tissue, HuH-7 cells, HeLa cells, Jurkat cells, K-562 cells, NIH/3T3 cells

**IP** : HeLa cells,

**IHC** : human breast cancer tissue,

**IF/ICC** : A431 cells,

## Storage

### Storage:

Store at -20°C. Stable for one year after shipment.

### Storage Buffer:

PBS with 0.02% sodium azide and 50% glycerol pH 7.3.

Aliquoting is unnecessary for -20°C storage

\*\*\* 20ul sizes contain 0.1% BSA

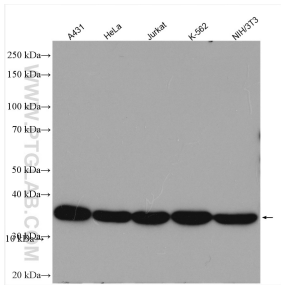
For technical support and original validation data for this product please contact:

T: 1 (888) 4PTGLAB (1-888-478-4522) (toll free in USA), or 1(312) 455-8498 (outside USA)

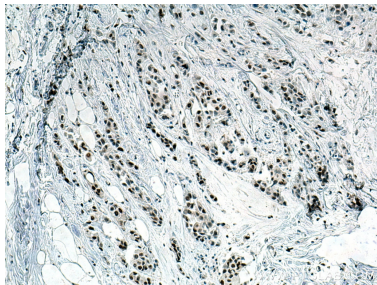
E: [proteintech@ptglab.com](mailto:proteintech@ptglab.com)  
W: [ptglab.com](http://ptglab.com)

This product is exclusively available under Proteintech Group brand and is not available to purchase from any other manufacturer.

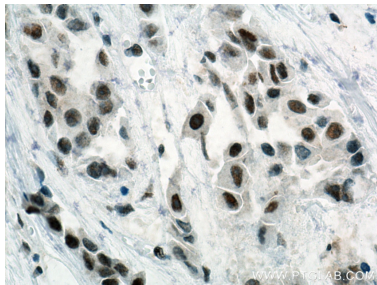
Selected Validation Data



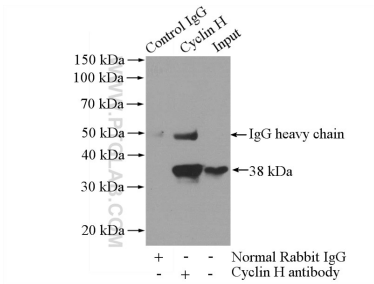
Various lysates were subjected to SDS PAGE followed by western blot with 10718-1-AP (Cyclin H antibody) at dilution of 1:1000 incubated at room temperature for 1.5 hours.



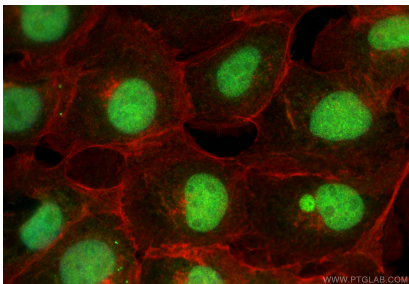
Immunohistochemical analysis of paraffin-embedded human breast cancer tissue slide using 10718-1-AP (Cyclin H antibody) at dilution of 1:2000 (under 10x lens). Heat mediated antigen retrieval with Tris-EDTA buffer (pH 9.0).



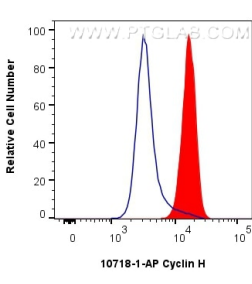
Immunohistochemical analysis of paraffin-embedded human breast cancer tissue slide using 10718-1-AP (Cyclin H antibody) at dilution of 1:2000 (under 40x lens). Heat mediated antigen retrieval with Tris-EDTA buffer (pH 9.0).



IP result of anti-Cyclin H (IP:10718-1-AP, 4ug; Detection:10718-1-AP 1:1000) with HeLa cells lysate 1200ug.



Immunofluorescent analysis of (4% PFA) fixed A431 cells using Cyclin H antibody (10718-1-AP) at dilution of 1:400 and CoraLite®488-Conjugated Goat Anti-Rabbit IgG(H+L) (SA00013-2), CL594-Phalloidin (red).



1x10<sup>6</sup> A431 cells were intracellularly stained with 0.25 ug Cyclin H Polyclonal antibody (10718-1-AP) and CoraLite®488-Conjugated Goat Anti-Rabbit IgG(H+L) (SA00013-2)(red), or 0.25 ug Rabbit IgG control Rabbit PolyAb (30000-0-AP) (blue). Cells were fixed and permeabilized with Transcription Factor Staining Buffer Kit (PF00011).