

For Research Use Only

Cyclophilin A Polyclonal antibody

Catalog Number: 10720-1-AP

Featured Product

27 Publications



Basic Information

Catalog Number: 10720-1-AP	GenBank Accession Number: BC005320	Purification Method: Antigen affinity purification
Size: 150ul, Concentration: 800 µg/ml by Nanodrop and 320 µg/ml by Bradford method using BSA as the standard;	GeneID (NCBI): 5478	Recommended Dilutions: WB 1:2000-1:10000 IHC 1:50-1:500 IF 1:50-1:500
Source: Rabbit	Full Name: peptidylprolyl isomerase A (cyclophilin A)	
Isotype: IgG	Calculated MW: 18 kDa	
Immunogen Catalog Number: AG1120	Observed MW: 18 kDa	

Applications

Tested Applications: FC, IF, IHC, WB, ELISA	Positive Controls: WB : HeLa cells, C6 cells, Raji cells, HepG2 cells, K-562 cells, NIH/3T3 cells IHC : human colon cancer tissue, human placenta tissue, human tonsillitis tissue, human testis tissue IF : HepG2 cells,
Cited Applications: IF, IHC, WB	
Species Specificity: human, mouse, rat	
Cited Species: human, rat, mouse, monkey	
Note-IHC: suggested antigen retrieval with TE buffer pH 9.0; (*) Alternatively, antigen retrieval may be performed with citrate buffer pH 6.0	

Background Information

Cyclophilin A, also named as PPIA and Rotamase A, belongs to the cyclophilin-type PPIase family and PPIase A subfamily. PPIases accelerate the folding of proteins. It catalyzes the cis-trans isomerization of proline imidic peptide bonds in oligopeptides. PPIA forms a trimolecular complex with cyclophilin and calcineurins to inhibit calcineurin phosphatase activity. PPIA is incorporated into the virion of the type 1 human immunodeficiency virus (HIV-1) via a direct interaction with the capsid domain of the viral Gag polyprotein and is crucial for efficient viral replication.

Notable Publications

Author	Pubmed ID	Journal	Application
Shuyu Xin	36075565	Virol Sin	WB,IHC,IF
Hidenori Yasuda	34662453	FASEB J	IF
Yanqing Wang	31623908	J Endod	IF

Storage

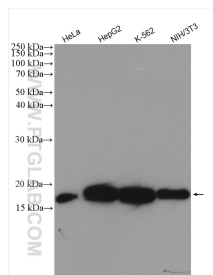
Storage:
Store at -20°C. Stable for one year after shipment.
Storage Buffer:
PBS with 0.02% sodium azide and 50% glycerol pH 7.3.
Aliquoting is unnecessary for -20°C storage

*** 20ul sizes contain 0.1% BSA

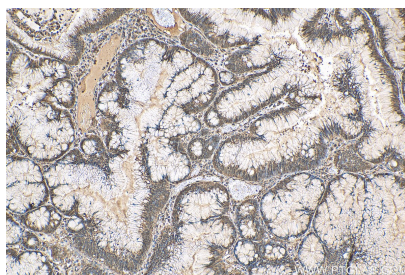
For technical support and original validation data for this product please contact:
T: 1 (888) 4PTGLAB (1-888-478-4522) (toll free in USA), or 1(312) 455-8498 (outside USA)
E: proteintech@ptglab.com
W: ptglab.com

This product is exclusively available under Proteintech Group brand and is not available to purchase from any other manufacturer.

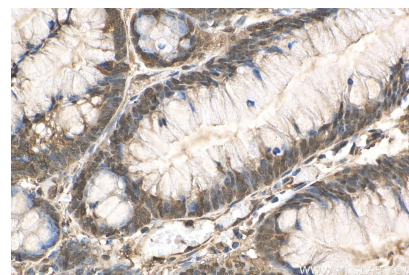
Selected Validation Data



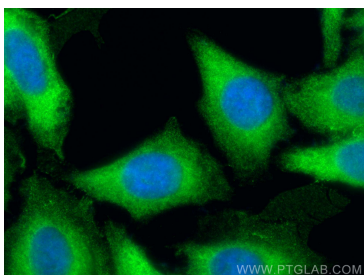
Various lysates were subjected to SDS PAGE followed by western blot with 10720-1-AP (Cyclophilin A antibody) at dilution of 1:6000 incubated at room temperature for 1.5 hours.



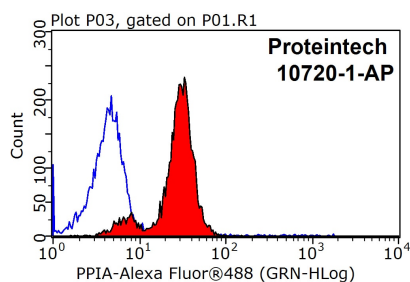
Immunohistochemical analysis of paraffin-embedded human colon cancer tissue slide using 10720-1-AP (Cyclophilin A antibody) at dilution of 1:200 (under 10x lens). Heat mediated antigen retrieval with Tris-EDTA buffer (pH 9.0).



Immunohistochemical analysis of paraffin-embedded human colon cancer tissue slide using 10720-1-AP (Cyclophilin A antibody) at dilution of 1:200 (under 40x lens). Heat mediated antigen retrieval with Tris-EDTA buffer (pH 9.0).



Immunofluorescent analysis of (-20°C Methanol) fixed HepG2 cells using Cyclophilin A antibody (10720-1-AP) at dilution of 1:200 and CoraLite@488-Conjugated AffiniPure Goat Anti-Rabbit IgG(H+L).



1X10⁶ HeLa cells were stained with 0.2ug Cyclophilin A antibody (10720-1-AP, red) and control antibody (blue). Fixed with 90% MeOH blocked with 3% BSA (30 min). Alexa Fluor 488-conjugated AffiniPure Goat Anti-Rabbit IgG(H+L) with dilution 1:1000.