

For Research Use Only

CSRP3 Polyclonal antibody

Catalog Number: 10721-1-AP **3 Publications**



Basic Information

Catalog Number: 10721-1-AP	GenBank Accession Number: BC005900	Purification Method: Antigen affinity purification
Size: 150ul, Concentration: 400 µg/ml by Nanodrop and 150 µg/ml by Bradford method using BSA as the standard;	GeneID (NCBI): 8048	Recommended Dilutions: WB 1:500-1:3000 IP 0.5-4.0 ug for IP and 1:1000-1:4000 for WB
Source: Rabbit	Full Name: cysteine and glycine-rich protein 3 (cardiac LIM protein)	IHC 1:20-1:200
Isotype: IgG	Calculated MW: 21 kDa	
Immunogen Catalog Number: AG1136	Observed MW: 21 kDa	

Applications

Tested Applications: IHC, IP, WB, ELISA	Positive Controls:
Cited Applications: IHC, WB	WB: mouse heart tissue, human heart tissue, rat heart tissue
Species Specificity: human, mouse, rat	IP: mouse heart tissue,
Cited Species: human, mouse	IHC: human heart tissue, human pancreas cancer tissue

Note-IHC: suggested antigen retrieval with TE buffer pH 9.0; (*) Alternatively, antigen retrieval may be performed with citrate buffer pH 6.0

Background Information

Notable Publications

Author	Pubmed ID	Journal	Application
Hao Huang	34558151	J Gene Med	IHC
Aymeric Ravel-Chapuis	28369518	Hum Mol Genet	WB
Julia Straubinger	28138039	FASEB J	WB

Storage

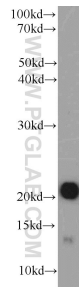
Storage:
Store at -20°C. Stable for one year after shipment.
Storage Buffer:
PBS with 0.02% sodium azide and 50% glycerol pH 7.3.
Aliquoting is unnecessary for -20°C storage

*** 20ul sizes contain 0.1% BSA

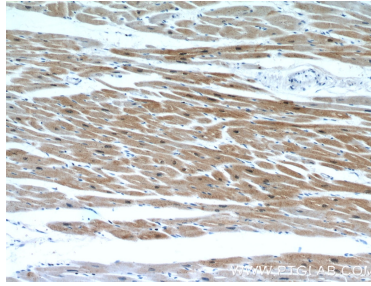
For technical support and original validation data for this product please contact:
T: 1 (888) 4PTGLAB (1-888-478-4522) (toll free in USA), or 1(312) 455-8498 (outside USA) E: proteintech@ptglab.com W: ptglab.com

This product is exclusively available under Proteintech Group brand and is not available to purchase from any other manufacturer.

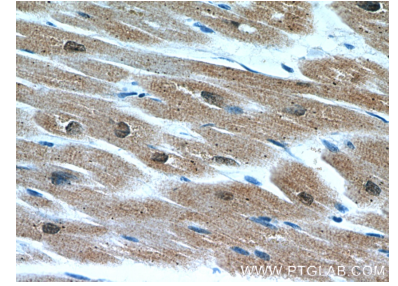
Selected Validation Data



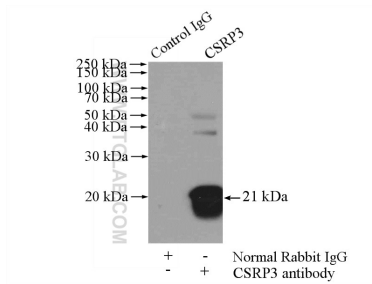
mouse heart tissue were subjected to SDS PAGE followed by western blot with 10721-1-AP (CSR3 antibody) at dilution of 1:2000 incubated at room temperature for 1.5 hours.



Immunohistochemical analysis of paraffin-embedded human heart using 10721-1-AP (CSR3 antibody) at dilution of 1:50 (under 10x lens).



Immunohistochemical analysis of paraffin-embedded human heart using 10721-1-AP (CSR3 antibody) at dilution of 1:50 (under 40x lens).



IP Result of anti-CSR3 (IP:10721-1-AP, 4ug; Detection:10721-1-AP 1:2000) with mouse heart tissue lysate 4000ug.