

For Research Use Only

# UBE2B Polyclonal antibody

Catalog Number: 10733-1-AP

Featured Product

4 Publications



## Basic Information

### Catalog Number:

10733-1-AP

### Size:

150ul, Concentration: 260 ug/ml by Nanodrop and 133 ug/ml by Bradford method using BSA as the standard;

### Source:

Rabbit

### Isotype:

IgG

### Immunogen Catalog Number:

AG1147

### GenBank Accession Number:

BC005979

### GeneID (NCBI):

7320

### UNIPROT ID:

P63146

### Full Name:

ubiquitin-conjugating enzyme E2B (RAD6 homolog)

### Calculated MW:

17 kDa

### Observed MW:

17 kDa

### Purification Method:

Antigen affinity purification

### Recommended Dilutions:

WB 1:500-1:1000

IHC 1:50-1:500

## Applications

### Tested Applications:

WB, IHC, ELISA

### Cited Applications:

WB, IF, IHC

### Species Specificity:

human, mouse, rat

### Cited Species:

human, mouse

**Note-IHC: suggested antigen retrieval with TE buffer pH 9.0; (\*) Alternatively, antigen retrieval may be performed with citrate buffer pH 6.0**

### Positive Controls:

WB : L02 cells, Transfected HEK-293 cells

IHC : human ovary tumor tissue,

## Background Information

UBE2B (Ubiquitin-conjugating enzyme E2 B) is also named as RAD6B and belongs to the ubiquitin-conjugating enzyme family. Rad6B is an E2-conjugating enzyme, reported to mediate beta-catenin polyubiquitination and stabilization, thus activating the Wnt signaling pathway (PMID:21118991). The gene encodes a 152 amino acid protein. The Rad6B and Cdc34 proteins are significantly elevated in meiotic and postmeiotic haploid germ cells when chromatin modifications occur (PMID:10373550).

## Notable Publications

Author	Pubmed ID	Journal	Application
Xi Zeng	35313791	Bioengineered	WB,IHC,IF
Mou Lisha L	23863405	Biol Reprod	WB,IF
Yu-Chi Li	27431683	Int J Mol Med	

## Storage

### Storage:

Store at -20°C. Stable for one year after shipment.

### Storage Buffer:

PBS with 0.02% sodium azide and 50% glycerol pH 7.3.

Aliquoting is unnecessary for -20°C storage

\*\*\* 20ul sizes contain 0.1% BSA

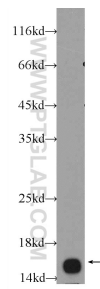
For technical support and original validation data for this product please contact:

T: 1 (888) 4PTGLAB (1-888-478-4522) (toll free in USA), or 1(312) 455-8498 (outside USA)

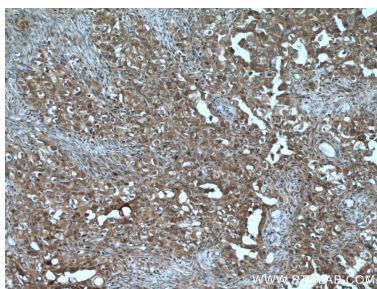
E: [proteintech@ptglab.com](mailto:proteintech@ptglab.com)  
W: [ptglab.com](http://ptglab.com)

This product is exclusively available under Proteintech Group brand and is not available to purchase from any other manufacturer.

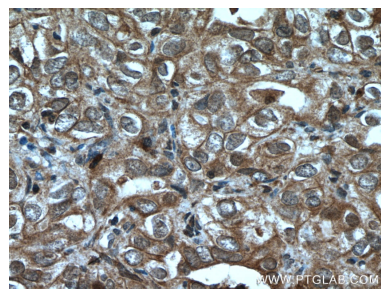
Selected Validation Data



L02 cells were subjected to SDS PAGE followed by western blot with 10733-1-AP (UBE2B Antibody) at dilution of 1:600 incubated at room temperature for 1.5 hours.



Immunohistochemical analysis of paraffin-embedded human ovary tumor tissue slide using 10733-1-AP (UBE2B antibody) at dilution of 1:200 (under 10x lens. Heat mediated antigen retrieval with Tris-EDTA buffer (pH 9.0).



Immunohistochemical analysis of paraffin-embedded human ovary tumor tissue slide using 10733-1-AP (UBE2B antibody) at dilution of 1:200 (under 40x lens. Heat mediated antigen retrieval with Tris-EDTA buffer (pH 9.0).