

For Research Use Only

MSI2 Polyclonal antibody, PBS Only

Catalog Number:10770-1-PBS



Basic Information

Catalog Number:

10770-1-PBS

Size:

100ug , Concentration: 1 mg/ml by Nanodrop;

Source:

Rabbit

Isotype:

IgG

Immunogen Catalog Number:

AG1213

GenBank Accession Number:

BC001526

GeneID (NCBI):

124540

UNIPROT ID:

Q96DH6

Full Name:

musashi homolog 2 (Drosophila)

Calculated MW:

35 kDa

Observed MW:

37-40 kDa

Purification Method:

Antigen affinity purification

Applications

Tested Applications:

WB, IHC, IP, Indirect ELISA

Species Specificity:

human, mouse, rat

Background Information

MSI2 is an RNA-binding protein that regulates the expression of target mRNAs at the translation level. It binds to RNA via 2 ribonucleoprotein-type RNA recognition motifs in their N-termini, to consensus motifs in mRNAs to inhibit transcription. It may play a role in the proliferation and maintenance of stem cells in the central nervous system. MSI2 can regulate normal hematopoiesis and promote aggressive myeloid leukemia

Storage

Storage:

Store at -80°C.

Storage Buffer:

PBS only, pH7.3

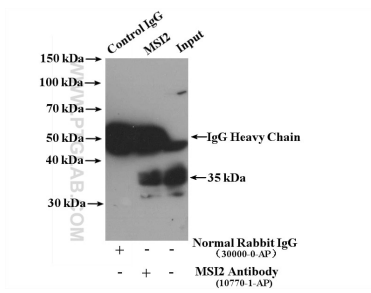
For technical support and original validation data for this product please contact:

T: 1 (888) 4PTGLAB (1-888-478-4522) (toll free in USA), or 1(312) 455-8498 (outside USA)

E: proteintech@ptglab.com
W: ptglab.com

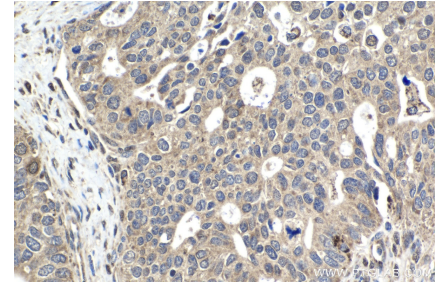
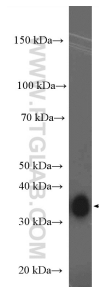
This product is exclusively available under Proteintech Group brand and is not available to purchase from any other manufacturer.

Selected Validation Data



MCF-7 cells were subjected to SDS PAGE followed by western blot with 10770-1-AP (MSI2 antibody) at dilution of 1:500. This data was developed using the same antibody clone with 10770-1-PBS in a different storage buffer formulation.

PC-12 cells were subjected to SDS PAGE followed by western blot with 10770-1-AP (MSI2 antibody at dilution of 1:4000 incubated at room temperature for 1.5 hours. This data was developed using the same antibody clone with 10770-1-PBS in a different storage buffer formulation.



Immunohistochemical analysis of paraffin-embedded human ovary tumor tissue slide using 10770-1-AP (MSI2 antibody) at dilution of 1:1000 (under 40x lens). Heat mediated antigen retrieval with Tris-EDTA buffer (pH 9.0). This data was developed using the same antibody clone with 10770-1-PBS in a different storage buffer formulation.