

For Research Use Only

PRIM1 Polyclonal antibody

Catalog Number: 10773-1-AP **7 Publications**



Basic Information

Catalog Number: 10773-1-AP	GenBank Accession Number: BC005266	Purification Method: Antigen affinity purification
Size: 150ul , Concentration: 133 µg/ml by Bradford method using BSA as the standard;	GeneID (NCBI): 5557	Recommended Dilutions: WB 1:500-1:3000 IP 0.5-4.0 ug for 1.0-3.0 mg of total protein lysate IHC 1:20-1:200 IF 1:50-1:500
Source: Rabbit	UNIPROT ID: P49642	
Isotype: IgG	Full Name: primase, DNA, polypeptide 1 (49kDa)	
Immunogen Catalog Number: AG1124	Calculated MW: 50 kDa	
	Observed MW: 50 kDa	

Applications

Tested Applications: IF, IHC, IP, WB, ELISA	Positive Controls: WB : HeLa cells, Sp2/0 cells, K-562 cells, HepG2 cells, Jurkat cells IP : HeLa cells, IHC : human lymphoma tissue, human thyroid cancer tissue IF : HeLa cells,
Cited Applications: WB,IHC	
Species Specificity: human, mouse, rat	
Cited Species: human, mouse	

Note-IHC: suggested antigen retrieval with TE buffer pH 9.0; (*) Alternatively, antigen retrieval may be performed with citrate buffer pH 6.0

Background Information

DNA replication in human cells is initiated by a complex apparatus containing a DNA polymerase-alpha/primase complex. Primase synthesizes oligoribonucleotides that serve as primers for the initiation of DNA synthesis. It plays a role in both the initiation of DNA replication and the synthesis of Okazaki fragments for lagging strand synthesis. PRIM1 is a subunit of this complex.

Notable Publications

Author	Pubmed ID	Journal	Application
Arthur J Zaug	34718732	Nucleic Acids Res	WB
Zachary Mirman	35316728	DNA Repair (Amst)	WB
Zachary Mirman	35027730	Nat Cell Biol	WB

Storage

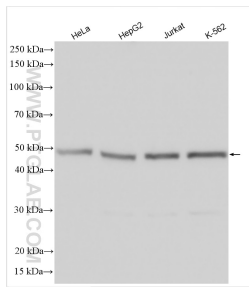
Storage:
Store at -20°C. Stable for one year after shipment.
Storage Buffer:
PBS with 0.02% sodium azide and 50% glycerol pH 7.3.
Aliquoting is unnecessary for -20°C storage

*** 20ul sizes contain 0.1% BSA

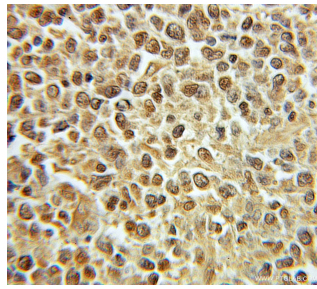
For technical support and original validation data for this product please contact:
T: 1 (888) 4PTGLAB (1-888-478-4522) (toll free in USA), or 1(312) 455-8498 (outside USA)
E: proteintech@ptglab.com
W: ptglab.com

This product is exclusively available under Proteintech Group brand and is not available to purchase from any other manufacturer.

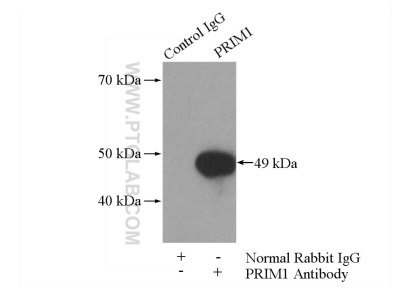
Selected Validation Data



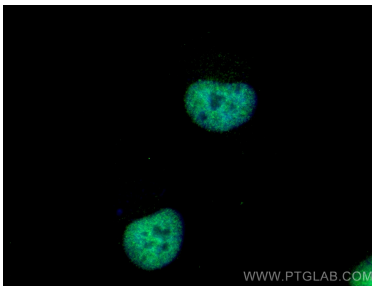
Various lysates were subjected to SDS PAGE followed by western blot with 10773-1-AP (PRIM1 antibody) at dilution of 1:1500 incubated at room temperature for 1.5 hours.



Immunohistochemical analysis of paraffin-embedded human lymphoma using 10773-1-AP (PRIM1 antibody) at dilution of 1:100 (under 10x lens).



IP result of anti-PRIM1 (IP:10773-1-AP, 4ug; Detection:10773-1-AP 1:300) with HeLa cells lysate 2800ug.



Immunofluorescent analysis of (4% PFA) fixed HeLa cells using PRIM1 antibody (10773-1-AP) at dilution of 1:200 and Coralite®488-Conjugated AffiniPure Goat Anti-Rabbit IgG(H+L).