

For Research Use Only

# COTL1 Polyclonal antibody

Catalog Number: 10781-1-AP

Featured Product

10 Publications



## Basic Information

### Catalog Number:

10781-1-AP

### Size:

150ul, Concentration: 650 ug/ml by Nanodrop;

### Source:

Rabbit

### Isotype:

IgG

### Immunogen Catalog Number:

AG1230

### GenBank Accession Number:

BC010884

### GeneID (NCBI):

23406

### UNIPROT ID:

Q14019

### Full Name:

coactosin-like 1 (Dictyostelium)

### Calculated MW:

16 kDa

### Observed MW:

16 kDa

### Purification Method:

Antigen affinity purification

### Recommended Dilutions:

WB 1:2000-1:16000

IP 0.5-4.0 ug for 1.0-3.0 mg of total protein lysate

IHC 1:50-1:500

## Applications

### Tested Applications:

WB, IP, IHC, ELISA

### Cited Applications:

WB, IHC, IF

### Species Specificity:

human, mouse, rat

### Cited Species:

human, mouse

**Note-IHC: suggested antigen retrieval with TE buffer pH 9.0; (\*) Alternatively, antigen retrieval may be performed with citrate buffer pH 6.0**

### Positive Controls:

**WB**: A549 cells, HeLa cells, mouse brain tissue, rat brain tissue

**IP**: mouse kidney tissue,

**IHC**: human lung cancer tissue,

## Background Information

COTL1, also named as CLP, binds to F-actin in a calcium-independent manner. And it has no direct effect on actin depolymerization.

## Notable Publications

Author	Pubmed ID	Journal	Application
Shanqi Guo	27893417	Oncotarget	WB
Bei Wang	35873386	J Inflamm Res	IHC
Alexandra Ruth Glathar	36672394	Cancers (Basel)	WB,IHC,IF

## Storage

### Storage:

Store at -20°C. Stable for one year after shipment.

### Storage Buffer:

PBS with 0.02% sodium azide and 50% glycerol pH 7.3.

Aliquoting is unnecessary for -20°C storage

\*\*\* 20ul sizes contain 0.1% BSA

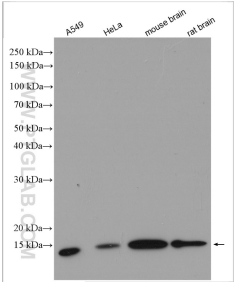
For technical support and original validation data for this product please contact:

T: 1 (888) 4PTGLAB (1-888-478-4522) (toll free in USA), or 1(312) 455-8498 (outside USA)

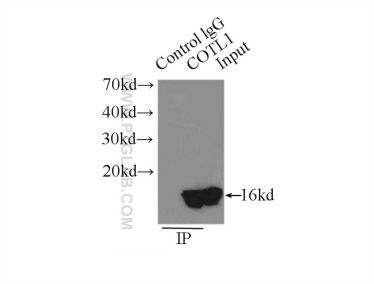
E: [proteintech@ptglab.com](mailto:proteintech@ptglab.com)  
W: [ptglab.com](http://ptglab.com)

This product is exclusively available under Proteintech Group brand and is not available to purchase from any other manufacturer.

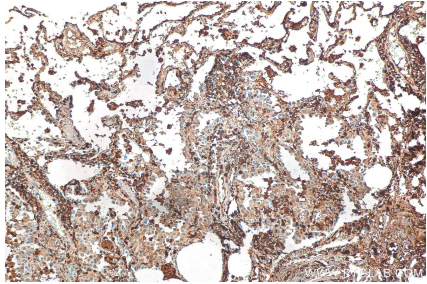
Selected Validation Data



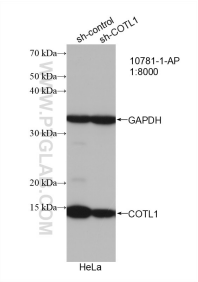
Various lysates were subjected to SDS PAGE followed by western blot with 10781-1-AP (COTL1 antibody) at dilution of 1:8000 incubated at room temperature for 1.5 hours.



IP result of anti-COTL1 (IP:10781-1-AP, 3ug; Detection:10781-1-AP 1:3000) with mouse kidney tissue lysate 12500ug.



Immunohistochemical analysis of paraffin-embedded human lung cancer tissue slide using 10781-1-AP (COTL1 antibody) at dilution of 1:200 (under 10x lens). Heat mediated antigen retrieval with Tris-EDTA buffer (pH 9.0).



WB result of COTL1 antibody (10781-1-AP; 1:8000; incubated at room temperature for 1.5 hours) with sh-Control and sh-COTL1 transfected HeLa cells.