

For Research Use Only

Alpha Adducin Polyclonal antibody

Catalog Number: 10791-1-AP

2 Publications



Basic Information

Catalog Number: 10791-1-AP	GenBank Accession Number: BC013393	Purification Method: Antigen affinity purification
Size: 150ul, Concentration: 700 µg/ml by Nanodrop and 367 µg/ml by Bradford method using BSA as the standard;	GeneID (NCBI): 118	Recommended Dilutions: WB 1:500-1:2000 IHC 1:20-1:200 IF 1:50-1:500
Source: Rabbit	Full Name: adducin 1 (alpha)	
Isotype: IgG	Calculated MW: 81 kDa, 84 kDa, 70 kDa	
Immunogen Catalog Number: AG1245	Observed MW: 115-120 kDa	

Applications

Tested Applications: IF, IHC, WB, ELISA	Positive Controls: WB : K-562 cells, mouse testis tissue
Cited Applications: WB	IHC : human ovary tumor tissue,
Species Specificity: human, mouse, rat	IF : mouse brain tissue,
Cited Species: rat, bovine	

Note-IHC: suggested antigen retrieval with TE buffer pH 9.0; (*) Alternatively, antigen retrieval may be performed with citrate buffer pH 6.0

Background Information

Notable Publications

Author	Pubmed ID	Journal	Application
Yue Wang	35945402	Mol Biol Rep	WB
Nghi M Nguyen	35456952	Int J Mol Sci	WB

Storage

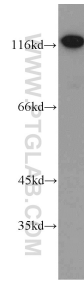
Storage:
Store at -20°C. Stable for one year after shipment.
Storage Buffer:
PBS with 0.02% sodium azide and 50% glycerol pH 7.3.
Aliquoting is unnecessary for -20°C storage

*** 20ul sizes contain 0.1% BSA

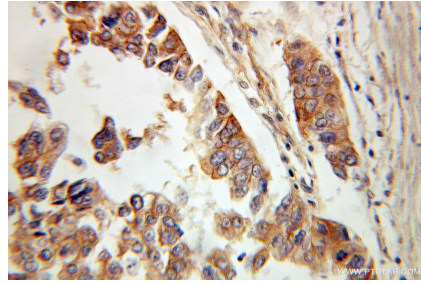
For technical support and original validation data for this product please contact:
T: 1 (888) 4PTGLAB (1-888-478-4522) (toll free in USA), or 1(312) 455-8498 (outside USA)
E: proteintech@ptglab.com
W: ptglab.com

This product is exclusively available under Proteintech Group brand and is not available to purchase from any other manufacturer.

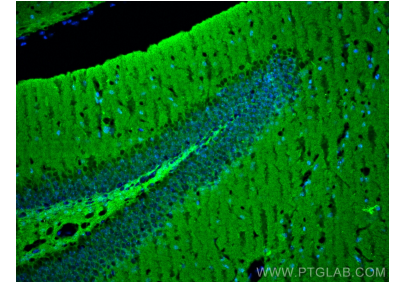
Selected Validation Data



K-562 cells were subjected to SDS PAGE followed by western blot with 10791-1-AP (Alpha adducin antibody) at dilution of 1:800 incubated at room temperature for 1.5 hours.



Immunohistochemical analysis of paraffin-embedded human ovary tumor using 10791-1-AP (Alpha adducin antibody) at dilution of 1:100 (under 10x lens).



Immunofluorescent analysis of (4% PFA) fixed mouse brain tissue using Alpha Adducin antibody (10791-1-AP) at dilution of 1:200 and CoraLite®488-Conjugated AffiniPure Goat Anti-Rabbit IgG(H+L).