

For Research Use Only

# ARF3 Polyclonal antibody

Catalog Number: 10800-1-AP

1 Publications



## Basic Information

<b>Catalog Number:</b> 10800-1-AP	<b>GenBank Accession Number:</b> BC017565	<b>Purification Method:</b> Antigen affinity purification
<b>Size:</b> 150ul , Concentration: 500 ug/ml by Bradford method using BSA as the standard;	<b>GeneID (NCBI):</b> 377	<b>Recommended Dilutions:</b> WB 1:500-1:2000
<b>Source:</b> Rabbit	<b>UNIPROT ID:</b> P61204	IHC 1:50-1:500
<b>Isotype:</b> IgG	<b>Full Name:</b> ADP-ribosylation factor 3	IF/ICC 1:50-1:500
<b>Immunogen Catalog Number:</b> AG1174	<b>Calculated MW:</b> 21 kDa	
	<b>Observed MW:</b> 18-20 kDa	

## Applications

<b>Tested Applications:</b> WB, IHC, IF/ICC, ELISA	<b>Positive Controls:</b>
<b>Cited Applications:</b> WB, IHC	<b>WB :</b> mouse brain tissue, HeLa cells, HepG2 cells, human brain tissue, mouse cerebellum tissue, Raji cells, rat brain tissue
<b>Species Specificity:</b> human, mouse, rat	<b>IHC :</b> human kidney tissue, human pancreas tissue, human pancreas cancer tissue
<b>Cited Species:</b> mouse	<b>IF/ICC :</b> HepG2 cells,
<b>Note-IHC: suggested antigen retrieval with TE buffer pH 9.0; (*) Alternatively, antigen retrieval may be performed with citrate buffer pH 6.0</b>	

## Background Information

ADP-ribosylation factors (ARFs) are members of the ARF family of GTP-binding proteins of the Ras superfamily, with 20kda protein size. ARFs bind and regulate GTP/GDP cycle by alternating between the active GTP-bound and inactive GDP-bound conformations. ARF family proteins are essential and ubiquitous in eukaryotes. Six highly conserved members of the family have been identified in mammalian cells. They function in vesicular traffic and actin remodelling and other bioprocesses in cells. ARF3 is 95% homologous to ARF1. Its function was not fully understood. (PMID: 7759471, PMID: 16042562). This antibody can bind ARFs for the close sequences.

## Notable Publications

Author	Pubmed ID	Journal	Application
Naila Umer	35950913	Development	WB,IHC

## Storage

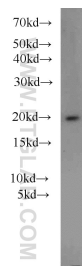
**Storage:**  
Store at -20°C. Stable for one year after shipment.  
**Storage Buffer:**  
PBS with 0.02% sodium azide and 50% glycerol pH 7.3.  
Aliquoting is unnecessary for -20°C storage

\*\*\* 20ul sizes contain 0.1% BSA

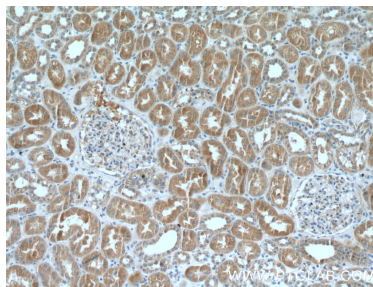
For technical support and original validation data for this product please contact:  
T: 1 (888) 4PTGLAB (1-888-478-4522) (toll free in USA), or 1(312) 455-8498 (outside USA)  
E: [proteintech@ptglab.com](mailto:proteintech@ptglab.com)  
W: [ptglab.com](http://ptglab.com)

This product is exclusively available under Proteintech Group brand and is not available to purchase from any other manufacturer.

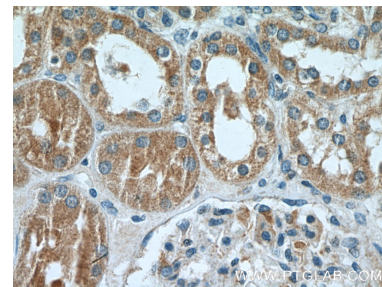
## Selected Validation Data



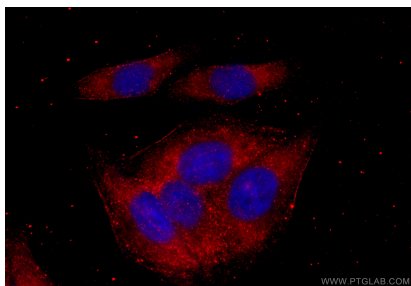
mouse brain tissue were subjected to SDS PAGE followed by western blot with 10800-1-AP (ARF3 antibody) at dilution of 1:1000 incubated at room temperature for 1.5 hours.



Immunohistochemical analysis of paraffin-embedded human kidney tissue slide using 10800-1-AP (ARF3 Antibody) at dilution of 1:200 (under 10x lens).



Immunohistochemical analysis of paraffin-embedded human kidney tissue slide using 10800-1-AP (ARF3 Antibody) at dilution of 1:200 (under 40x lens).



Immunofluorescent analysis of (-20°C Ethanol) fixed HepG2 cells using ARF3 antibody (10800-1-AP) at dilution of 1:200 and CoraLite®594-Conjugated Goat Anti-Rabbit IgG(H+L) (SA00013-4).