

For Research Use Only

# Geminin Polyclonal antibody

Catalog Number: 10802-1-AP

Featured Product

54 Publications



## Basic Information

<b>Catalog Number:</b> 10802-1-AP	<b>GenBank Accession Number:</b> BC005185	<b>Purification Method:</b> Antigen affinity purification
<b>Size:</b> 150ul, Concentration: 1000 µg/ml by Nanodrop;	<b>GeneID (NCBI):</b> 51053	<b>Recommended Dilutions:</b> WB 1:2000-1:12000 IP 0.5-4.0 ug for 1.0-3.0 mg of total protein lysate IHC 1:50-1:500 IF 1:50-1:500
<b>Source:</b> Rabbit	<b>Full Name:</b> geminin, DNA replication inhibitor	
<b>Isotype:</b> IgG	<b>Calculated MW:</b> 24 kDa	
<b>Immunogen Catalog Number:</b> AG1076	<b>Observed MW:</b> 28-29 kDa	

## Applications

**Tested Applications:**  
FC, IF, IHC, IP, WB, ELISA

**Cited Applications:**  
IF, IHC, IP, WB

**Species Specificity:**  
human, mouse, rat

**Cited Species:**  
human, mouse

**Positive Controls:**

**WB:** HEK-293 cells, human testis tissue, mouse testis tissue, HeLa cells; mouse testis tissue, rat testis tissue

**IP:** HEK-293 cells,

**IHC:** human colon cancer tissue, human breast cancer tissue

**IF:** HepG2 cells,

**Note-IHC: suggested antigen retrieval with TE buffer pH 9.0; (\*) Alternatively, antigen retrieval may be performed with citrate buffer pH 6.0**

## Background Information

GMNN, also designated geminin, contains 212 amino acids and has a destruction box sequence (RRTLKVIQP). GMNN participates in inhibiting DNA replication by preventing the incorporation of MCM complex into the pre-replication complex (pre-RC). It is degraded during the metaphase-anaphase transition of cell cycle's mitotic phase, which permits replication in the succeeding cell cycle. GMNN has a broad sedimentation profile ranging from about 25 kDa to 90 kDa, with a major peak at 30 kDa. Scanning of the signals shows that discrete peaks corresponding to the apparent mass of 42.5 kDa and 66 kDa are present. The dimer of geminin(50 kDa) can also be detected. (PMID: 15313623)

## Notable Publications

Author	Pubmed ID	Journal	Application
Haile Zhao	34658851	Front Pharmacol	WB,IP
Lise M van Wijk	33003546	Cancers (Basel)	IF
A Llop-Guevara	34520831	Ann Oncol	IF

## Storage

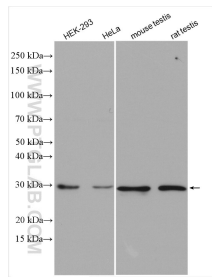
**Storage:**  
Store at -20°C. Stable for one year after shipment.  
**Storage Buffer:**  
PBS with 0.02% sodium azide and 50% glycerol pH 7.3.  
Aliquoting is unnecessary for -20°C storage

\*\*\* 20ul sizes contain 0.1% BSA

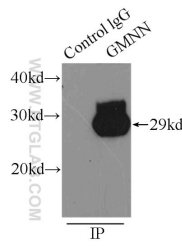
For technical support and original validation data for this product please contact:  
T: 1 (888) 4PTGLAB (1-888-478-4522) (toll free in USA), or 1(312) 455-8498 (outside USA)  
E: proteintech@ptglab.com  
W: ptglab.com

This product is exclusively available under Proteintech Group brand and is not available to purchase from any other manufacturer.

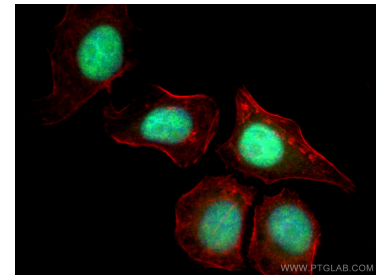
## Selected Validation Data



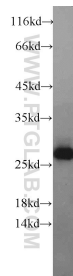
Various lysates were subjected to SDS PAGE followed by western blot with 10802-1-AP (Geminin antibody) at dilution of 1:6000 incubated at room temperature for 1.5 hours.



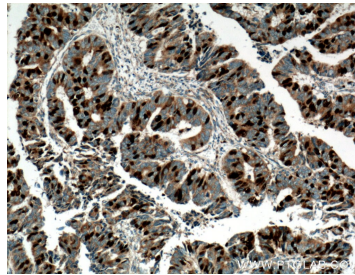
IP Result of anti-Geminin (IP:10802-1-AP, 4ug; Detection:10802-1-AP 1:1000) with HEK-293 cells lysate 4500ug.



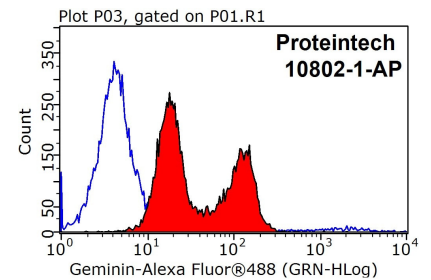
Immunofluorescent analysis of (4% PFA) fixed HepG2 cells using 10802-1-AP (Geminin antibody), at dilution of 1:200 and Coralite@488-Conjugated AffiniPure Goat Anti-Rabbit IgG(H+L).



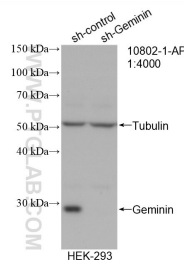
human testis tissue were subjected to SDS PAGE followed by western blot with 10802-1-AP (Geminin antibody) at dilution of 1:300 incubated at room temperature for 1.5 hours.



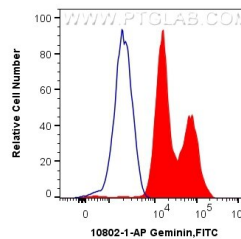
Immunohistochemical analysis of paraffin-embedded human colon cancer tissue slide using 10802-1-AP (Geminin antibody at dilution of 1:200 (under 10x lens). Heat mediated antigen retrieval with Tris-EDTA buffer (pH 9.0).



1X10<sup>6</sup> MCF-7 cells were stained with 0.2ug Geminin antibody (10802-1-AP, red) and control antibody (blue). Fixed with 90% MeOH blocked with 3% BSA (30 min). Alexa Fluor 488-conjugated AffiniPure Goat Anti-Rabbit IgG(H+L) with dilution 1:1000.



WB result of Geminin antibody (10802-1-AP; 1:4000; incubated at room temperature for 1.5 hours) with sh-Control and sh-Geminin transfected HEK-293 cells.



1X10<sup>6</sup> HeLa cells were intracellularly stained with 0.4 ug Anti-Human Geminin (10802-1-AP) and Coralite@488-Conjugated AffiniPure Goat Anti-Rabbit IgG(H+L) at dilution 1:1000 (red), or 0.4 ug Rabbit IgG control Rabbit PolyAb (30000-O-AP, Clone:) (blue). Cells were fixed and permeabilized with True-Nuclear Transcription Factor Buffer Set.