

For Research Use Only

Kallikrein 1 Polyclonal antibody

Catalog Number: 10815-1-AP

3 Publications



Basic Information

Catalog Number:

10815-1-AP

Size:

150ul, Concentration: 300 ug/ml by Nanodrop and 140 ug/ml by Bradford method using BSA as the standard;

Source:

Rabbit

Isotype:

IgG

Immunogen Catalog Number:

AG1119

GenBank Accession Number:

BC005313

GeneID (NCBI):

3816

UNIPROT ID:

P06870

Full Name:

kallikrein 1

Calculated MW:

29 kDa

Observed MW:

45-50 kDa

Purification Method:

Antigen affinity purification

Recommended Dilutions:

WB 1:500-1:1000

IP 0.5-4.0 ug for 1.0-3.0 mg of total protein lysate

IHC 1:20-1:200

Applications

Tested Applications:

WB, IP, IHC, ELISA

Cited Applications:

WB, IHC

Species Specificity:

human

Cited Species:

human

Positive Controls:

WB : A375 cells, BxPC-3 cells

IP : BxPC-3 cells,

IHC : human pancreas cancer tissue,

Note-IHC: suggested antigen retrieval with TE buffer pH 9.0; (*) Alternatively, antigen retrieval may be performed with citrate buffer pH 6.0

Background Information

KLK1 (tissue kallikrein 1) is a member of the tissue kallikrein family of serine proteases and is the primary kinin-generating enzyme in human airways. It is involved in the control of ionic transport in the renal tubule, an action that may not be kinin-mediated. This protein has 2 isoforms produced by alternative splicing.

Notable Publications

Author	Pubmed ID	Journal	Application
Li Yajuan Y	23935844	PLoS One	WB
Yu Hui-Zhen HZ	21959973	Mol Cell Biochem	WB
Cerutti Janete MJM	20926528	J Clin Endocrinol Metab	IHC

Storage

Storage:

Store at -20°C. Stable for one year after shipment.

Storage Buffer:

PBS with 0.02% sodium azide and 50% glycerol pH 7.3.

Aliquoting is unnecessary for -20°C storage

*** 20ul sizes contain 0.1% BSA

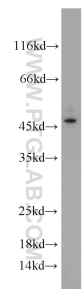
For technical support and original validation data for this product please contact:

T: 1 (888) 4PTGLAB (1-888-478-4522) (toll free in USA), or 1(312) 455-8498 (outside USA)

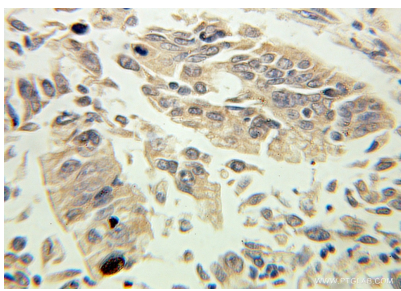
E: proteintech@ptglab.com
W: ptglab.com

This product is exclusively available under Proteintech Group brand and is not available to purchase from any other manufacturer.

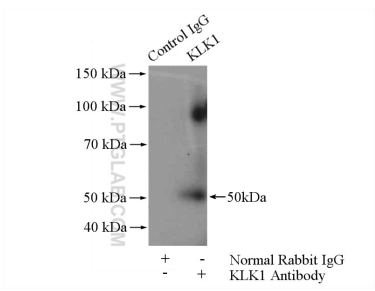
Selected Validation Data



A375 cells were subjected to SDS PAGE followed by western blot with 10815-1-AP (Kallikrein 1 antibody) at dilution of 1:500 incubated at room temperature for 1.5 hours.



Immunohistochemical analysis of paraffin-embedded human pancreas cancer using 10815-1-AP (Kallikrein 1 antibody) at dilution of 1:100 (under 40x Lens).



IP result of anti-Kallikrein 1 (IP:10815-1-AP, 4ug; Detection:10815-1-AP 1:500) with BxPC-3 cells lysate 1520ug.