

For Research Use Only

PTH LH Polyclonal antibody

Catalog Number: 10817-1-AP **9 Publications**



Basic Information

Catalog Number: 10817-1-AP	GenBank Accession Number: BC005961	Purification Method: Antigen affinity purification
Size: 150ul , Concentration: 270 µg/ml by Nanodrop and 267 µg/ml by Bradford method using BSA as the standard;	GeneID (NCBI): 5744	Recommended Dilutions: WB 1:200-1:1000
Source: Rabbit	Full Name: parathyroid hormone-like hormone	
Isotype: IgG	Calculated MW: 20 kDa	
Immunogen Catalog Number: AG1133	Observed MW: 20 kDa	

Applications

Tested Applications: WB, ELISA	Positive Controls: WB : human milk,
Cited Applications: IF, IHC, WB	
Species Specificity: human	
Cited Species: human, mouse	

Background Information

Notable Publications

Author	Pubmed ID	Journal	Application
Moyuan Deng	34621738	Front Cell Dev Biol	WB
Qiusheng Shan	36238359	Oncol Lett	IHC
Kazumichi Kitayama	34713296	Int J Oncol	IHC

Storage

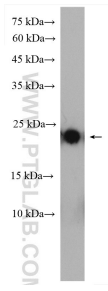
Storage:
Store at -20°C. Stable for one year after shipment.
Storage Buffer:
PBS with 0.02% sodium azide and 50% glycerol pH 7.3.
Aliquoting is unnecessary for -20°C storage

*** 20ul sizes contain 0.1% BSA

For technical support and original validation data for this product please contact:
T: 1 (888) 4PTGLAB (1-888-478-4522) (toll free in USA), or 1(312) 455-8498 (outside USA)
E: proteintech@ptglab.com
W: ptglab.com

This product is exclusively available under Proteintech Group brand and is not available to purchase from any other manufacturer.

Selected Validation Data



human milk were subjected to SDS PAGE followed by western blot with 10817-1-AP (PTHLH antibody) at dilution of 1:300 incubated at room temperature for 1.5 hours.