

For Research Use Only

ERCC2 Polyclonal antibody, PBS Only

Catalog Number:10818-1-PBS



Basic Information

Catalog Number:

10818-1-PBS

Size:

100ug , Concentration: 1 mg/ml by Nanodrop;

Source:

Rabbit

Isotype:

IgG

Immunogen Catalog Number:

AG1038

GenBank Accession Number:

BC008346

GeneID (NCBI):

2068

UNIPROT ID:

P18074

Full Name:

excision repair cross-complementing rodent repair deficiency, complementation group 2

Calculated MW:

87 kDa

Observed MW:

80 kDa

Purification Method:

Antigen affinity purification

Applications

Tested Applications:

WB, IHC, IP, Indirect ELISA

Species Specificity:

human

Background Information

Excision-repair complementing defective in Chinese hamster 2(ERCC2), belongs to the nucleotide excision repair pathway, is a component of the TFIIH transcription complex and required for the association of the CDK-activating kinase(CAK) subcomplex with TFIIH. Since TFIIH is involved in both DNA repair and cell cycle progression, ERCC2 is implicated to play an integral role in the nucleotide excision repair pathway. Also it involves in the regulation of vitamin-D receptor activity. As a part of the mitotic spindle-associated MMSD complex, ERCC2 has a role in chromosome segregation.

Storage

Storage:

Store at -80°C.

Storage Buffer:

PBS only, pH7.3

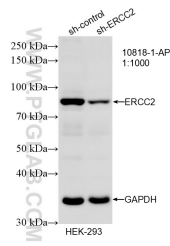
For technical support and original validation data for this product please contact:

T: 1 (888) 4PTGLAB (1-888-478-4522) (toll free in USA), or 1(312) 455-8498 (outside USA)

E: proteintech@ptglab.com
W: ptglab.com

This product is exclusively available under Proteintech Group brand and is not available to purchase from any other manufacturer.

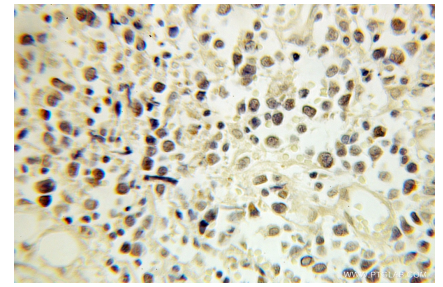
Selected Validation Data



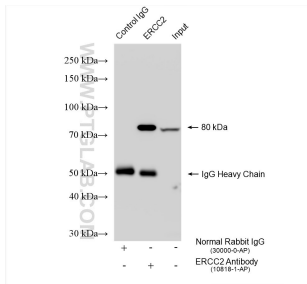
WB result of ERCC2 antibody (10818-1-AP; 1:1000; incubated at room temperature for 1.5 hours) with sh-Control and sh-ERCC2 transfected HEK-293 cells. This data was developed using the same antibody clone with 10818-1-PBS in a different storage buffer formulation.



HeLa cells were subjected to SDS PAGE followed by western blot with 10818-1-AP (ERCC2 antibody) at dilution of 1:500 incubated at room temperature for 1.5 hours. This data was developed using the same antibody clone with 10818-1-PBS in a different storage buffer formulation.



Immunohistochemical analysis of paraffin-embedded human lymphoma using 10818-1-AP (ERCC2 antibody) at dilution of 1:100 (under 10x lens). This data was developed using the same antibody clone with 10818-1-PBS in a different storage buffer formulation.



IP result of anti-ERCC2 (IP:10818-1-AP, 4ug; Detection:10818-1-AP 1:1000) with HEK-293 cells lysate 1575 ug. This data was developed using the same antibody clone with 10818-1-PBS in a different storage buffer formulation.