

For Research Use Only

Cytokeratin 18 Polyclonal antibody, PBS Only

Catalog Number: 10830-1-PBS



Basic Information

Catalog Number: 10830-1-PBS	GenBank Accession Number: BC000180	Purification Method: Antigen affinity purification
Size: 100ug, Concentration: 1000 ug/ml by Nanodrop;	GeneID (NCBI): 3875	
Source: Rabbit	UNIPROT ID: P05783	
Isotype: IgG	Full Name: keratin 18	
Immunogen Catalog Number: AG1260	Calculated MW: 48 kDa	
	Observed MW: 48 kDa	

Applications

Tested Applications:
WB, IHC, IF/ICC, FC (Intra), IP, ELISA

Species Specificity:
human, mouse, rat

Background Information

Keratins are a large family of proteins that form the intermediate filament cytoskeleton of epithelial cells, which are classified into two major sequence types. Type I keratins are a group of acidic intermediate filament proteins, including K9-K23, and the hair keratins Ha1-Ha8. Type II keratins are the basic or neutral counterparts to the acidic type I keratins, including K1-K8, and the hair keratins, Hb1-Hb6. KRT18, also named as CYK18, PIG46 and K18, is the most commonly found members of the intermediate filament gene family. KRT18 is a type I keratin which is found primarily in non squamous epithelia and is present in a majority of adenocarcinomas and ductal carcinomas but not in squamous cell carcinomas.

Storage

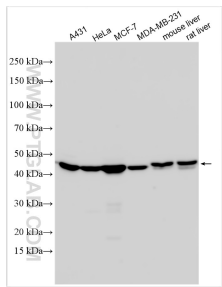
Storage:
Store at -80°C.

Storage Buffer:
PBS Only

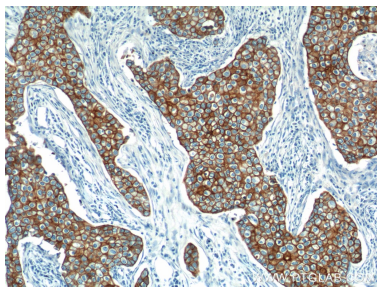
For technical support and original validation data for this product please contact:
T: 1 (888) 4PTGLAB (1-888-478-4522) (toll free in USA), or 1(312) 455-8498 (outside USA)
E: proteintech@ptglab.com
W: ptglab.com

This product is exclusively available under Proteintech Group brand and is not available to purchase from any other manufacturer.

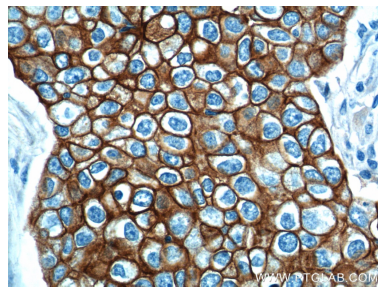
Selected Validation Data



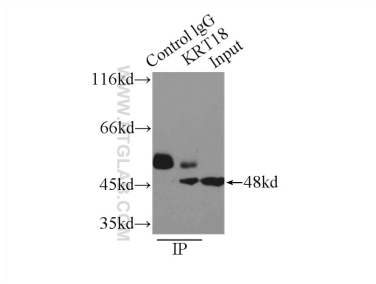
Various lysates were subjected to SDS PAGE followed by western blot with 10830-1-AP (Cytokeratin 18 antibody) at dilution of 1:50000 incubated at room temperature for 1.5 hours. This data was developed using the same antibody clone with 10830-1-PBS in a different storage buffer formulation.



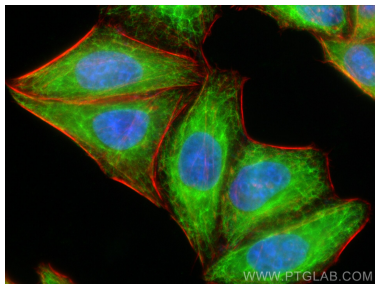
Immunohistochemical analysis of paraffin-embedded human breast cancer tissue slide using 10830-1-AP (Cytokeratin 18 antibody at dilution of 1:1000 (under 10x lens). This data was developed using the same antibody clone with 10830-1-PBS in a different storage buffer formulation.



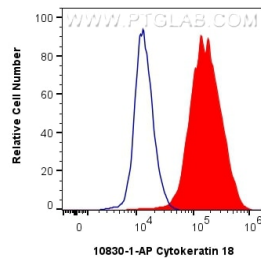
Immunohistochemical analysis of paraffin-embedded human breast cancer tissue slide using 10830-1-AP (Cytokeratin 18 antibody at dilution of 1:1000 (under 40x lens). This data was developed using the same antibody clone with 10830-1-PBS in a different storage buffer formulation.



IP result of anti-Cytokeratin 18 (IP:10830-1-AP, 3ug; Detection:10830-1-AP 1:2000) with A431 cells lysate 3300ug. This data was developed using the same antibody clone with 10830-1-PBS in a different storage buffer formulation.



Immunofluorescent analysis of (-20°C Ethanol) fixed HepG2 cells using Cytokeratin 18 antibody (10830-1-AP) at dilution of 1:400 and Coralite®488-Conjugated AffiniPure Goat Anti-Rabbit IgG(H+L) (SA00013-2), CL594-phalloidin (red). This data was developed using the same antibody clone with 10830-1-PBS in a different storage buffer formulation.



1x10⁶ HeLa cells were intracellularly stained with 0.8 ug Cytokeratin 18 Polyclonal antibody (10830-1-AP) and Coralite®488-Conjugated AffiniPure Goat Anti-Rabbit IgG(H+L) (SA00013-2)(red), or 0.8 ug Rabbit IgG control Rabbit PolyAb (30000-0-AP) (blue). Cells were fixed with 4% PFA and permeabilized with Flow Cytometry Perm Buffer (PF00011-C). This data was developed using the same antibody clone with 10830-1-PBS in a different storage