

For Research Use Only

# LSM4 Polyclonal antibody

Catalog Number: 10834-1-AP

2 Publications



## Basic Information

### Catalog Number:

10834-1-AP

### Size:

150ul, Concentration: 500 ug/ml by Nanodrop and 293 ug/ml by Bradford method using BSA as the standard;

### Source:

Rabbit

### Isotype:

IgG

### Immunogen Catalog Number:

AG1280

### GenBank Accession Number:

BC022198

### GeneID (NCBI):

25804

### UNIPROT ID:

Q9Y4Z0

### Full Name:

LSM4 homolog, U6 small nuclear RNA associated (*S. cerevisiae*)

### Calculated MW:

15 kDa

### Observed MW:

15 kDa

### Purification Method:

Antigen affinity purification

### Recommended Dilutions:

WB 1:500-1:1000

IHC 1:50-1:500

IF/ICC 1:50-1:500

## Applications

### Tested Applications:

WB, IHC, IF/ICC, ELISA

### Cited Applications:

WB

### Species Specificity:

human

### Cited Species:

human

**Note-IHC: suggested antigen retrieval with TE buffer pH 9.0; (\*) Alternatively, antigen retrieval may be performed with citrate buffer pH 6.0**

### Positive Controls:

WB : MCF7 cells, human placenta tissue, MDA-MB-231 cells

IHC : human lung cancer tissue,

IF/ICC : MCF-7 cells,

## Background Information

Sm-like proteins, such as LSM4, were identified in a variety of organisms based on sequence homology with the Sm protein family. Sm-like proteins contain the Sm sequence motif, which consists of 2 regions separated by a linker of variable length that folds as a loop. Sm-like proteins are thought to form a stable heteromer present in tri-snRNP particles, which are important for pre-mRNA splicing

## Notable Publications

Author	Pubmed ID	Journal	Application
Jeremiah J Bearss	33586867	EMBO Rep	WB
Berg Michael G MG	22252314	Mol Cell Biol	WB

## Storage

### Storage:

Store at -20°C. Stable for one year after shipment.

### Storage Buffer:

PBS with 0.02% sodium azide and 50% glycerol pH 7.3.

Aliquoting is unnecessary for -20°C storage

\*\*\* 20ul sizes contain 0.1% BSA

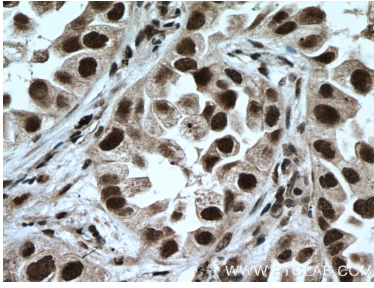
For technical support and original validation data for this product please contact:

T: 1 (888) 4PTGLAB (1-888-478-4522) (toll free in USA), or 1(312) 455-8498 (outside USA)

E: [proteintech@ptglab.com](mailto:proteintech@ptglab.com)  
W: [ptglab.com](http://ptglab.com)

This product is exclusively available under Proteintech Group brand and is not available to purchase from any other manufacturer.

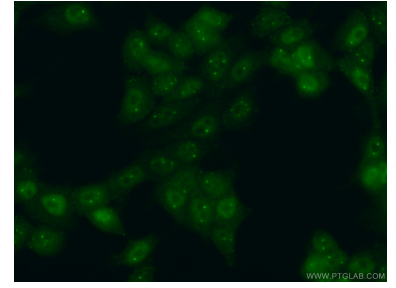
## Selected Validation Data



Immunohistochemical analysis of paraffin-embedded human lung cancer tissue slide using 10834-1-AP (LSM4 antibody) at dilution of 1:200 (under 40x lens. Heat mediated antigen retrieval with Tris-EDTA buffer (pH 9.0).



MCF7 cells were subjected to SDS PAGE followed by western blot with 10834-1-AP (LSM4 antibody) at dilution of 1:800 incubated at room temperature for 1.5 hours.



Immunofluorescent analysis of (4% PFA) fixed MCF-7 cells using 10834-1-AP (LSM4 antibody) at dilution of 1:50 and Alexa Fluor 488-conjugated Goat Anti-Rabbit IgG(H+L).