

For Research Use Only

Alpha Synuclein Polyclonal antibody, PBS Only

Catalog Number: 10842-1-PBS

Featured Product



Basic Information

Catalog Number:

10842-1-PBS

Size:

100ug, Concentration: 1 mg/ml by Nanodrop;

Source:

Rabbit

Isotype:

IgG

Immunogen Catalog Number:

AG1285

GenBank Accession Number:

BC013293

GeneID (NCBI):

6622

UNIPROT ID:

P37840

Full Name:

synuclein, alpha (non A4 component of amyloid precursor)

Calculated MW:

14 kDa

Observed MW:

15-19 kDa

Purification Method:

Antigen affinity purification

Applications

Tested Applications:

WB, IHC, IF/ICC, IF-Fro, ELISA

Species Specificity:

human, mouse, rat

Background Information

Alpha Synuclein (α -syn) is a 14-19 kDa phosphoprotein that is primarily localized to the presynaptic terminals of mature neurons, where it is involved in synaptic function and plasticity. α -syn has drawn intense interest ever since the late 1990s, when the first α -synuclein missense mutation was identified as a cause of familial Parkinson's disease (PD). Aggregated and hyper-phosphorylated forms of α -syn protein are the pathological hallmark of Lewy body disease, which includes Parkinson's disease (PD), diffuse Lewy body disease (DLBD), and Lewy body variant of Alzheimer's disease (LBV). This antibody can recognize all the isoforms of α -syn.

Storage

Storage:

Store at -80°C.

Storage Buffer:

PBS only, pH7.3

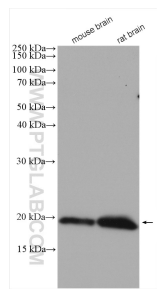
For technical support and original validation data for this product please contact:

T: 1 (888) 4PTGLAB (1-888-478-4522) (toll free in USA), or 1(312) 455-8498 (outside USA)

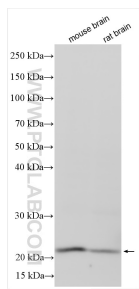
E: proteintech@ptglab.com
W: ptglab.com

This product is exclusively available under Proteintech Group brand and is not available to purchase from any other manufacturer.

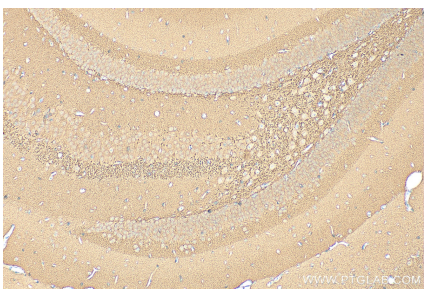
Selected Validation Data



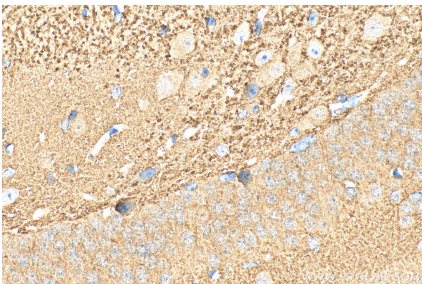
Various lysates were subjected to SDS PAGE followed by western blot with 10842-1-AP (alpha-synuclein antibody) at dilution of 1:800 incubated at room temperature for 1.5 hours. This data was developed using the same antibody clone with 10842-1-PBS in a different storage buffer formulation.



Various lysates were subjected to SDS PAGE followed by western blot with 10842-1-AP (Alpha Synuclein antibody) at dilution of 1:3000 incubated at room temperature for 1.5 hours. This data was developed using the same antibody clone with 10842-1-PBS in a different storage buffer formulation.



Immunohistochemical analysis of paraffin-embedded mouse brain tissue slide using 10842-1-AP (Alpha Synuclein antibody) at dilution of 1:200 (under 10x lens). Heat mediated antigen retrieval with Tris-EDTA buffer (pH 9.0). This data was developed using the same antibody clone with 10842-1-PBS in a different storage buffer formulation.



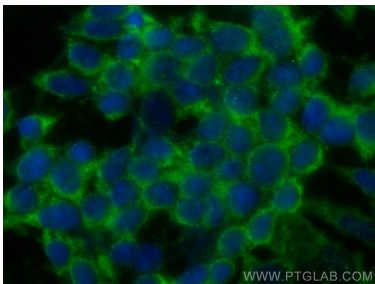
Immunohistochemical analysis of paraffin-embedded mouse brain tissue slide using 10842-1-AP (Alpha Synuclein antibody) at dilution of 1:200 (under 40x lens). Heat mediated antigen retrieval with Tris-EDTA buffer (pH 9.0). This data was developed using the same antibody clone with 10842-1-PBS in a different storage buffer formulation.



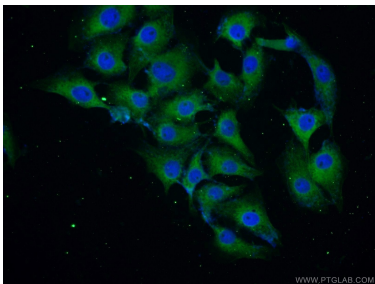
Immunohistochemical analysis of paraffin-embedded mouse brain tissue slide using 10842-1-AP (alpha-synuclein antibody at dilution of 1:200 (under 10x lens). Heat mediated antigen retrieval with Tris-EDTA buffer (pH 9.0).



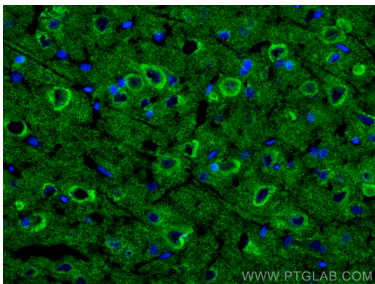
Immunohistochemical analysis of paraffin-embedded mouse brain tissue slide using 10842-1-AP (alpha-synuclein antibody at dilution of 1:200 (under 40x lens). Heat mediated antigen retrieval with Tris-EDTA buffer (pH 9.0).



Immunofluorescent analysis of (-20°C Ethanol) fixed SH-SY5Y cells using Alpha Synuclein antibody (10842-1-AP) at dilution of 1:400 and CoraLite®488-Conjugated AffiniPure Goat Anti-Rabbit IgG(H+L). This data was developed using the same antibody clone with 10842-1-PBS in a different storage buffer formulation.



Immunofluorescent analysis of SH-SY5Y cells using 10842-1-AP (alpha-synuclein antibody) at dilution of 1:25 and Alexa Fluor 488-conjugated AffiniPure Goat Anti-Rabbit IgG(H+L). This data was developed using the same antibody clone with 10842-1-PBS in a different storage buffer formulation.



Immunofluorescent analysis of (4% PFA) fixed frozen OCT-embedded rat brain tissue using Alpha Synuclein antibody (10842-1-AP) at dilution of 1:200 and CoraLite®488-Conjugated Goat Anti-Rabbit IgG(H+L) (SA00013-2). This data was developed using the same antibody clone with 10842-1-PBS in a different storage buffer formulation.