

For Research Use Only

JP45/JSRP1 Polyclonal antibody

Catalog Number: 10854-1-AP



Basic Information

Catalog Number: 10854-1-AP	GenBank Accession Number: BC021201	Purification Method: Antigen affinity purification
Size: 150ul , Concentration: 600 ug/ml by Nanodrop and 253 ug/ml by Bradford method using BSA as the standard;	GeneID (NCBI): 126306	Recommended Dilutions: WB 1:500-1:1000
Source: Rabbit	UNIPROT ID: Q96MG2	IHC 1:50-1:500
Isotype: IgG	Full Name: junctional sarcoplasmic reticulum protein 1	IF/ICC 1:200-1:800
Immunogen Catalog Number: AG1300	Calculated MW: 36 kDa, 45 kDa	
	Observed MW: 30 kDa	

Applications

Tested Applications: WB, IHC, IF/ICC, ELISA	Positive Controls:
Species Specificity: human	WB : human skeletal muscle tissue,
Note-IHC: suggested antigen retrieval with TE buffer pH 9.0; (*) Alternatively, antigen retrieval may be performed with citrate buffer pH 6.0	IHC : human pancreas cancer tissue,
	IF/ICC : HepG2 cells,

Background Information

JSRP1 (Junctional sarcoplasmic reticulum protein 1), also known as JP-45, is an integral protein of the junctional face membrane of the skeletal muscle sarcoplasmic reticulum (SR), and interacts with calsequestrin and the skeletal-muscle dihydropyridine receptor Cav1. JP-45 is an important protein for functional expression of voltage-dependent calcium channels. Involvement of JP-45 in the molecular mechanism underlying skeletal muscle excitation-contraction coupling has been reported. Although the predicated molecular weight of JP-45 is 36 kDa, it appears a 45-kDa band in western blotting in most cases.

Storage

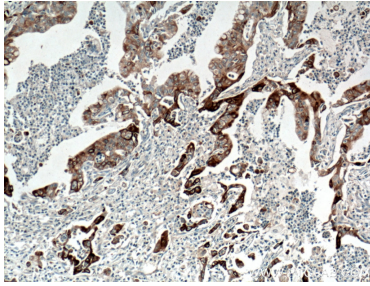
Storage:
Store at -20°C. Stable for one year after shipment.
Storage Buffer:
PBS with 0.02% sodium azide and 50% glycerol pH 7.3.
Aliquoting is unnecessary for -20°C storage

*** 20ul sizes contain 0.1% BSA

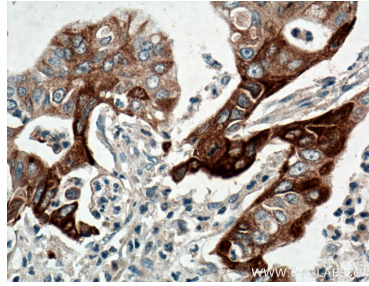
For technical support and original validation data for this product please contact:
T: 1 (888) 4PTGLAB (1-888-478-4522) (toll free in USA), or 1(312) 455-8498 (outside USA)
E: proteintech@ptglab.com
W: ptglab.com

This product is exclusively available under Proteintech Group brand and is not available to purchase from any other manufacturer.

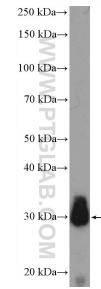
Selected Validation Data



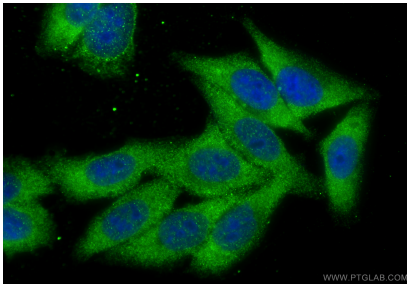
Immunohistochemical analysis of paraffin-embedded human pancreas cancer tissue slide using 10854-1-AP (JP45/JSRP1 antibody) at dilution of 1:200 (under 10x lens. Heat mediated antigen retrieval with Tris-EDTA buffer (pH 9.0).



Immunohistochemical analysis of paraffin-embedded human pancreas cancer tissue slide using 10854-1-AP (JP45/JSRP1 antibody) at dilution of 1:200 (under 40x lens. Heat mediated antigen retrieval with Tris-EDTA buffer (pH 9.0).



human skeletal muscle tissue were subjected to SDS PAGE followed by western blot with 10854-1-AP (JP45/JSRP1 antibody at dilution of 1:600 incubated at room temperature for 1.5 hours.



Immunofluorescent analysis of (-20°C Ethanol) fixed HepG2 cells using JP45/JSRP1 antibody (10854-1-AP) at dilution of 1:400 and CoraLite®488-Conjugated Goat Anti-Rabbit IgG(H+L) (SA00013-2).